

# Consumer price index

11 □ 1991 Monthly

## PRICES: Further fall in EC annual inflation to 4.6% in September

Between August and September the CPI for the Community as a whole rose by 0.4% bringing the annual inflation rate down to 4.6% in September 1991, compared with 4.9% in August 1991 and 6.1% in September 1990.

A comparison of the annual inflation rates for September 1991 with those for September 1990 show that inflation has been slowing down in 9 of the 12 member states.

The largest reductions were recorded in the UK (10.9% to 4.1%), in Portugal (13.7% to 10.2%) and in Greece (21.8% to 17.9%).

In 3 member states inflation is now higher than a year ago: Netherlands (2.7% to 4.6%), Germany (3.1% to 3.9%) and Ireland (2.9% to 3.5%). See table below.

The monthly changes between August and September 1991 were low to moderate in all EC countries except Greece, which reported an unusually large monthly increase of 3.9%, with strong rises across a wide range of goods and services.

The quarterly index for Ireland rose by 1.3% between mid-May and mid-August, which corresponds to an average monthly inflation of about 0.4% during this period.

At present the inflation rates of 7 Member States are below the EC-average of 4.6%; whilst the rates of the 5 other Member States are equal to or above this level.

For September 1991 compared with September 1990, and September 1990 compared with September 1989 figures are as follows (in order of increasing current inflation):

	<u>Sept. 91</u> Sept. 90	<u>Sept. 90</u> Sept. 89		<u>Sept. 91</u> Sept. 90	<u>Sept. 90</u> Sept. 89
Denmark	1.8%	3.1%	United Kingdom	4.1%	10.9%
Belgium	2.5%	3.7%	Netherlands	4.6%	2.7%
France	2.6%	3.8%	Spain	5.7%	6.4%
Luxembourg	3.2%	3.7%	Italy	6.1%	6.7%
Ireland*	3.5%	2.9%	Portugal	10.2%	13.7%
Germany**	3.9%	3.1%	Greece	17.9%	21.8%

The corresponding annual rates for the USA (3.4% in September) and Japan (2.4% in September) are significantly lower than the EC average of 4.6%.

\* Ireland: August 1991 compared with August 1990

\*\* The CPI for the Federal Republic of Germany continues to reflect the geographic borders prior to 3 October 1990



OFICINA ESTADÍSTICA DE LAS COMUNIDADES EUROPEAS  
DE EUROPÆISKE FÆLLESSKABERS STATISTISKE KONTOR  
STATISTISCHES AMT DER EUROPÄISCHEN GEMEINSCHAFTEN  
ΣΤΑΤΙΣΤΙΚΗ ΥΠΗΡΕΣΙΑ ΤΩΝ ΕΥΡΩΠΑΪΚΩΝ ΚΟΙΝΟΤΗΤΩΝ  
STATISTICAL OFFICE OF THE EUROPEAN COMMUNITIES  
OFFICE STATISTIQUE DES COMMUNAUTÉS EUROPÉENNES  
ISTITUTO STATISTICO DELLE COMUNITÀ EUROPEE  
BUREAU VOOR DE STATISTIEK DER EUROPESE GEMEENSCHAPPEN  
SERVIÇO DE ESTATÍSTICA DAS COMUNIDADES EUROPEIAS

L-2920 Luxembourg – Tél. 43011 – Télex: Comeur Lu 3423  
B-1049 Bruxelles, bâtiment Berlaymont, rue de la Loi 200 (bureau de liaison) – Tél. 235 1111

The information included in this bulletin has been taken from the Cronos data bank, which is accessible via the different host companies. For all information about these host companies contact Eurostat in Luxembourg, tel. 4301-4567.

To obtain specifications of the principal characteristics of the series contained in this bulletin contact Luxembourg:

**Mr Nijenhuis, tel. 4301-3202**

**Mr Desantis, tel. 4301-3511**

VERBRAUCHERPREISE

CONSUMER PRICES

PRIX A LA CONSOMMATION

GESAMTINDEX

GENERAL INDEX

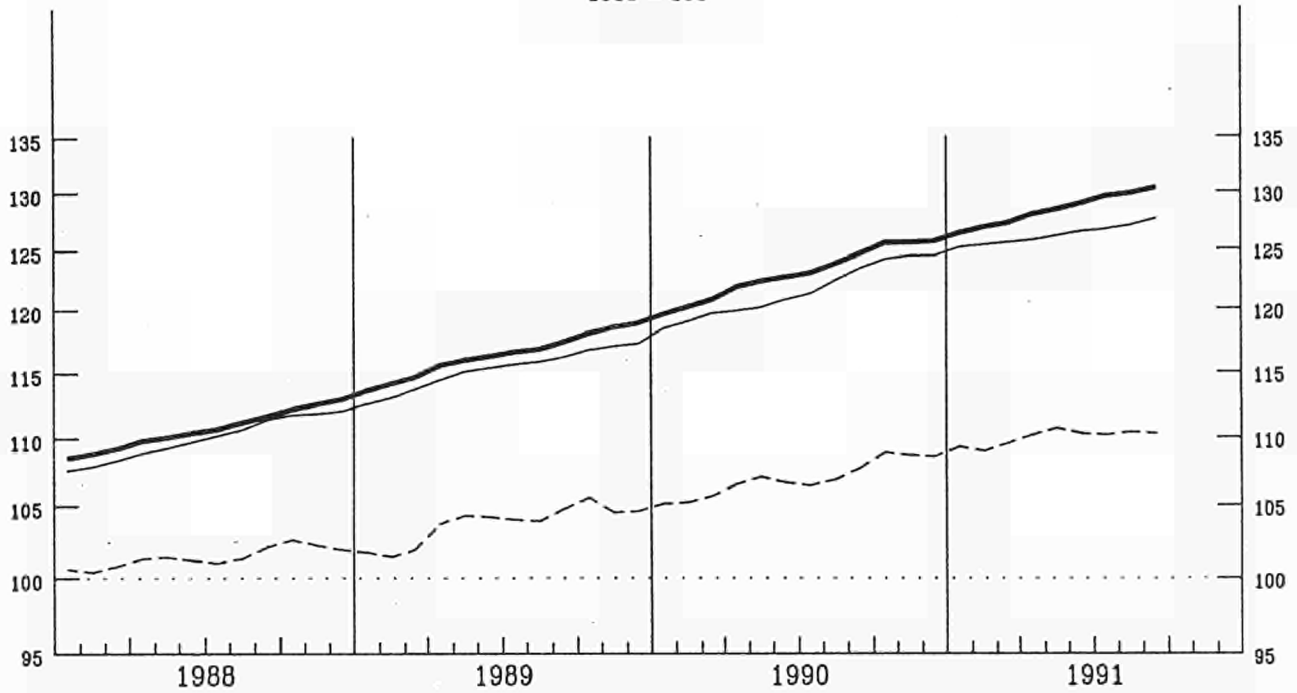
INDICE GENERAL

— USA

— EUR 12

- - - JAPAN

1985 = 100



EINFACH-LOGARITHISCHE SKALA

SEMI-LOGARITHMIC SCALE

ECHELLE SEMI-LOGARITHMIQUE

VERÄNDERUNG % T/T-12

VARIATION % T/T-12

VARIATION % T/T-12

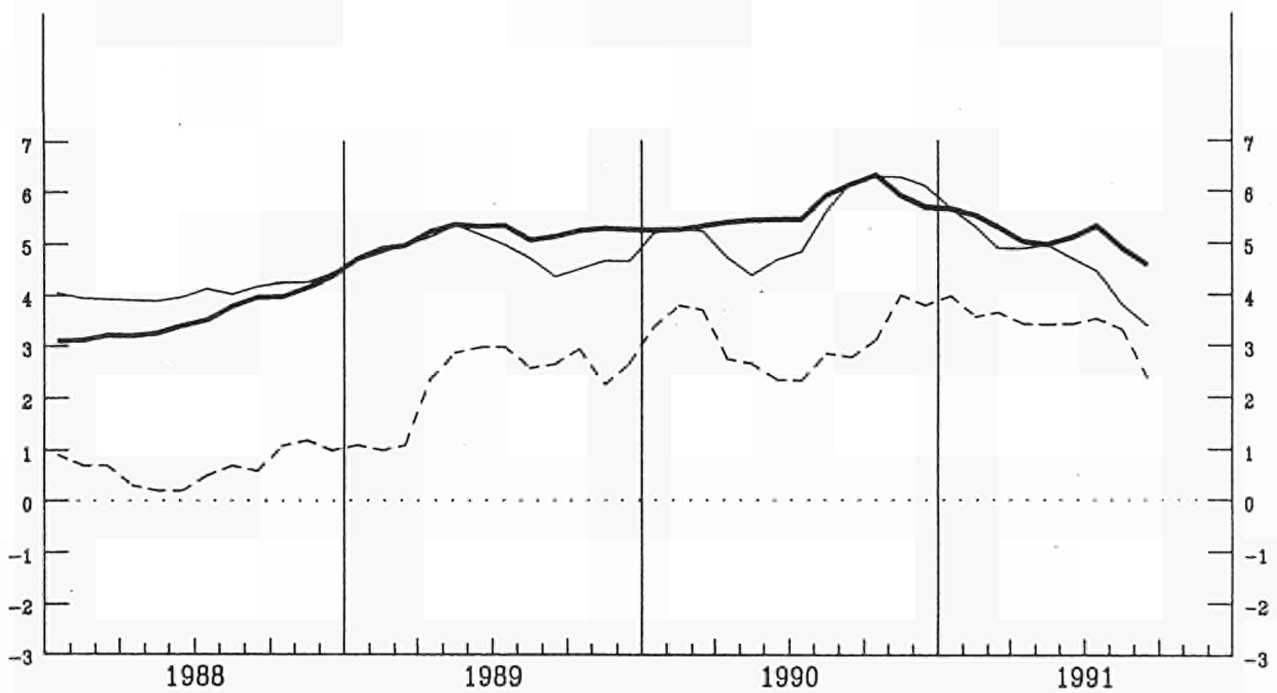


TABLE I

## CONSUMER PRICES

## GENERAL INDEX

	EUR 12	B	DK	D	GR	E	F	IRL	I	L	NL	P	UK	
	Price indices							1985=100						
Annual average														
1987	106.9	102.9	107.8	100.1	143.2	114.5	105.9	107.1	110.9	100.2	99.8	122.2	107.7	
1988	110.7	104.1	112.7	101.4	162.5	120.0	108.7	109.4	116.5	101.7	100.7	133.9	113.0	
1989	116.4	107.3	118.1	104.2	184.9	128.2	112.5	113.9	123.8	105.1	101.7	150.8	121.8	
1990	123.0	111.0	121.2	107.0	222.6	136.8	116.3	117.6	131.8	109.0	104.3	170.9	133.3	
1990														
September	124.6	112.4	122.7	107.5	232.3	139.2	117.5	:	133.2	109.5	105.3	175.1	136.7	
October	125.5	113.1	122.9	108.2	237.9	140.5	118.2	:	134.3	110.7	105.7	177.0	137.7	
November	125.6	112.7	122.8	108.0	241.3	140.2	118.0	118.7	135.1	111.2	105.6	178.2	137.4	
December	125.7	112.6	122.5	108.1	245.4	140.5	117.9	:	135.4	111.2	105.4	179.6	137.3	
1991														
January	126.4	113.4	122.5	108.8	244.9	142.2	118.4	:	136.3	111.2	106.0R	181.4	137.6	
February	126.9	113.8	122.8	109.1	245.3	142.0	118.6	119.6	137.5	111.4	106.1R	184.6	138.4	
March	127.2	113.3	123.0	109.0	249.7	142.5	118.7	:	138.3	111.6	106.8R	185.6	138.9	
April	128.0	113.4	123.3	109.5	258.3	142.8	119.1	:	138.8	111.2	107.2R	187.1	140.7	
May	128.4	113.8	124.1	109.9	259.3	143.2	119.4	120.6	139.3	111.7	107.4	189.5	141.1	
June	128.9	114.3	124.4	110.5	264.3	143.6	119.7	:	139.8	111.9	107.5	191.1	141.7	
July	129.5	114.9	124.0	111.5	264.1	145.4	120.1	:	140.4	112.5	109.0	191.7	141.4	
August	129.8P	115.3	124.2	111.5	263.5	146.0	120.4	122.2	140.8P	112.8	109.4	192.9	141.7	
September	130.3P	115.2	124.9	111.7	273.8	147.2	120.6P	:	141.3P	113.1	110.1	193.0	142.3	
	Rates of increase over one month (IRL 3 months)							(T/T-1)						
1990														
Sept./August	0.7	0.9	0.8	0.4	3.5	1.0	0.5	:	0.5	0.6	0.9	1.1	0.9	
Oct./Setp.	0.7	0.7	0.2	0.7	2.4	0.9	0.5	:	0.8	1.0	0.3	1.1	0.8	
Nov./Oct.	0.0	-0.4	-0.1	-0.2	1.4	-0.1	-0.2	0.6	0.6	0.5	0.0	0.7	-0.2	
Dec./Nov.	0.1	-0.1	-0.3	0.1	1.7	0.2	-0.1	:	0.2	0.0	-0.2	0.8	-0.1	
1991														
Jan/Dec	0.6	0.8	0.0	0.6	-0.2	1.2	0.4	:	0.7	0.1	0.6R	1.0	0.2	
Feb./Jan.	0.4	0.3	0.3	0.3	0.1	-0.1	0.2	0.8	0.9	0.1	0.1R	1.8	0.5	
March/Feb.	0.3	-0.4	0.2	-0.1	1.8	0.3	0.1	:	0.6	0.2	0.7R	0.5	0.4	
April/March	0.6	0.1	0.2	0.5	3.4	0.2	0.3	:	0.4	-0.4	0.4R	0.8	1.3	
May/April	0.3	0.4	0.7	0.4	0.4	0.3	0.3	0.8	0.4	0.5	0.2	1.3	0.3	
June/May	0.4	0.5	0.2	0.5	1.9	0.3	0.2	:	0.4	0.2	0.1	0.8	0.4	
July/June	0.5	0.5	-0.3	0.9	-0.1	1.2	0.4	:	0.4	0.5	1.4	0.3	-0.2	
August/July	0.2P	0.3	0.2	0.0	-0.2	0.4	0.2	1.3	0.3P	0.3	0.4	0.6	0.2	
Sept./August	0.4P	-0.1	0.6	0.2	3.9	0.8	0.2P	:	0.4P	0.2	0.6	0.0	0.4	
1990/89														
	Rates of increase over 12 months							(T/T-12)						
September	6.1	3.7	3.1	3.1	21.8	6.4	3.8	:	6.7	3.7	2.7	13.7	10.9	
October	6.3	4.3	2.7	3.3	22.3	7.0	3.9	:	6.8	4.2	2.9	14.4	10.9	
November	5.9	4.0	2.2	3.0	22.9	6.7	3.5	2.7	6.8	4.5	2.9	14.1	9.7	
December	5.7	3.5	1.9	2.8	22.8	6.5	3.4	:	6.6	4.4	2.7	13.7	9.3	
1991/90														
January	5.6	3.9	2.5	2.8	21.7	6.8	3.5	:	6.3	3.0	3.4R	12.9	9.0	
February	5.5	4.0	2.6	2.7	21.8	6.0	3.5	2.5	6.4	3.2	3.1R	12.3	8.9	
March	5.3	3.3	2.4	2.5	19.5	5.9	3.2	:	6.6	3.5	3.4R	12.2	8.2	
April	5.0	2.9	2.6	2.8	21.5	5.9	3.2	:	6.6	2.9	3.3R	11.8	6.4	
May	5.0	3.2	2.5	3.0	18.4	6.2	3.2	3.1	6.7	3.2	3.4	12.0	5.8	
June	5.1	3.6	2.9	3.5	18.1	6.2	3.3	:	6.6	3.3	3.6	12.6	5.8	
July	5.3	3.8	2.9	4.4	18.3	6.1	3.4	:	6.7	3.8	4.7	12.1	5.5	
August	4.9P	3.5	2.1	4.1	17.4	6.0	3.0	3.5	6.2P	3.6	4.7	11.4	4.7	
September	4.6P	2.5	1.8	3.9	17.9	5.7	2.6P	:	6.1P	3.2	4.6	10.2	4.1	

TABLE II

## CONSUMER PRICES

## GENERAL INDEX

	U.S.A	Japan	Switzerland	Austria	Norway	Sweden	Finland	Canada
	Price indices				1985=100			
Annual average								
1987	105.7	100.7	102.2	103.1	116.5	108.6	107.1	108.7
1988	110.0	101.4	104.2	105.1	124.3	114.9	112.6	113.1
1989	115.3	103.7	107.4	107.8	130.0	122.3	120.0	118.7
1990	121.5	106.9	113.2	111.3	135.4	135.1	127.3	124.4
<b>1990</b>								
September	123.4	107.7	114.3	112.6	136.5	137.9	128.8	125.2
October	124.1	108.9	115.0	112.7	137.6	138.8	129.2	126.2
November	124.4	108.7	116.0	112.3	137.6	139.3	129.1	126.9
December	124.4	108.6	116.0	112.3	137.2	139.1	129.0	126.8
<b>1991</b>								
January	125.2	109.3	117.0	112.9	137.8	142.4	130.9	130.2
February	125.4	109.0	118.1	113.7	138.3	146.3	131.6	130.2
March	125.5	109.5	118.1	114.0	139.3	146.9	131.7	130.7
April	125.7	110.2	118.4	114.1	139.7	147.7	132.2	130.7
May	126.1	110.7	119.4	114.2	139.9	147.8	132.8	131.3
June	126.5	110.3	119.9	114.9	140.0	147.6	132.7	131.9
July	126.7	110.2	120.0	116.3	140.2	147.6	132.7	132.0
August	127.1	110.4	120.6	117.0	140.1	147.5	132.8	132.1
September	127.6	110.3P	120.8	:	141.1	149.1	133.0	131.8
	Rates of increase over one month (IRL 3 months)				(T/T-1)			
<b>1990</b>								
Sept./August	0.8	0.8	0.4	-0.2	1.0	1.1	0.5	0.3
Oct./Sept.	0.6	1.1	0.7	0.1	0.8	0.7	0.3	0.9
Nov./Oct.	0.2	-0.2	0.9	-0.4	0.0	0.3	-0.1	0.6
Dec./Nov.	0.0	-0.1	0.0	0.0	-0.3	-0.1	-0.1	-0.1
<b>1991</b>								
Jan/Dec	0.6	0.7	0.8	0.5	0.4	2.3	1.5	2.6
Feb./Jan.	0.1	-0.3	1.0	0.7	0.3	2.8	0.5	0.0
March/Feb.	0.1	0.5	0.0	0.3	0.7	0.4	0.1	0.4
April/March	0.1	0.6	0.2	0.1	0.3	0.5	0.4	0.0
May/April	0.3	0.5	0.9	0.1	0.2	0.1	0.5	0.5
June/May	0.3	-0.4	0.4	0.6	0.1	-0.1	-0.1	0.5
July/June	0.1	-0.1	0.1	1.2	0.1	0.0	0.0	0.1
August/July	0.3	0.2	0.5	0.6	-0.1	-0.1	0.1	0.1
Sept./August	0.4	-0.1P	0.2	:	0.7	1.1	0.2	-0.2
	Rates of increase over 12 months				(T/T-12)			
<b>1990/89</b>								
September	6.2	3.0	6.0	3.7	3.9	11.5	5.7	4.3
October	6.3	3.5	6.4	3.7	4.6	11.3	5.6	4.8
November	6.3	4.2	6.0	3.9	4.5	11.4	5.6	5.0
December	6.1	3.8	5.3	3.5	4.4	10.9	4.9	5.0
<b>1991/90</b>								
January	5.7	4.0	5.5	3.4	4.0	10.0	4.9	6.8
February	5.3	3.6	6.2	3.3	4.0	12.6	5.0	6.2
March	4.9	3.6	5.8	3.5	3.5	9.9	4.8	6.3
April	4.9	3.4	5.8	3.3	3.8	10.7	4.6	6.3
May	5.0	3.4	6.3	3.3	3.8	10.1	4.6	6.2
June	4.7	3.4	6.5	3.8	3.5	10.1	4.2	6.3
July	4.4	3.5	6.6	3.6	3.5	9.0	4.1	5.8
August	3.8	3.3	6.0	3.7	3.6	8.2	3.7	5.8
September	3.4	2.4P	5.7	:	3.3	8.1	3.3	5.4

# **EXPLANATORY NOTES**

## **METHODOLOGY**

The consumer price indices given here are the national indices which have different names in each country. As far as trends are concerned, the general index published by EUROSTAT always corresponds to the general index published by the country. The component items of this general index are groups of national indices aggregated according to a harmonized classification conforming to the ESA (European System of Integrated Economic Accounts). For these groups, the price trends correspond to the trends noted by the national indices for the same classification field. The field covered by the general index varies according to country; as regards the population concerned (specific income bracket, certain socio-professional categories or total households), the geographical areas used (capital, urban areas, country as a whole, etc.) or differences in treatments of expenditure on rent, health care, etc... Finally, there is no uniform method for seasonal adjustments. A fixed system is used in some countries, whereas in others a chain system is used (variable weightings). The reference years used at national level for the indices vary according to country. For ease of comparison, EUROSTAT has chosen 1985 as the common year for the presentation of these indices.

## **THE CALCULATION OF THE EUR-12 INDEX**

The EUR-12 index as calculated by EUROSTAT is a weighted average of national price indices. The weight used is the proportion of each country in the final consumption of households for EUR-12. The values of this consumption in national currency are converted into purchasing power standard (PPS); for this purpose the purchasing power parities of the G.D.P. are used. Up to 1987 purchasing power parities are those which result from the 1980 enquiry, from 1988 onwards they are those from the 1985 enquiry. The index calculated is a chain index of the "Laspeyres" type with weights changing each year. However, the weights are lagged by three years since the national accounts data needed become available only after three years. For example: the weights used for 1991 are those of 1988, for 1990 those of 1987. Moreover, national accounts data are often revised leading to revisions of the consumption weights. In order to avoid continuous modifications in the EUR-12 index for previous periods, EUROSTAT has decided to "freeze" the weights which are used. Thus the EUR-12 index will not be affected by revisions of the national accounts. However when Member States carry out major revisions in the price series for past years, EUR-12 data will be calculated using these new series.

**Venta y suscripciones • Salg og abonnement • Verkauf und Abonnement • Πωλήσεις και συνδρομές  
Sales and subscriptions • Vente et abonnements • Vendita e abbonamenti  
Verkoop en abonnementen • Venda e assinaturas**

**BELGIQUE / BELGIË**

**Moniteur belge / Belgisch Staatsblad**  
Rue de Louvain 42 / Louvenseweg 42  
1000 Bruxelles / 1000 Brussel  
Tél. (02) 512 00 26  
Fax 511 01 84  
CCP / Postrekening 000-2005502-27

Autres distributeurs / Overige verkooppunten

**Librairie européenne /  
Europese Boekhandel**

Avenue Albert Jonnart 50 /  
Albert Jonnartlaan 50  
1200 Bruxelles / 1200 Brussel  
Tél. (02) 734 02 81  
Fax 735 08 60

**Jean De Lannoy**

Avenue du Roi 202 / Koningslaan 202  
1060 Bruxelles / 1060 Brussel  
Tél. (02) 538 51 69  
Télex 63220 UNBOOK B

**CREDOC**

Rue de la Montagne 34 / Bergstraat 34  
Bte 11 / Bus 11  
1000 Bruxelles / 1000 Brussel

**DANMARK**

**J. H. Schultz Information A/S**

**EF-Publikationer**

Ottillavej 18  
2500 Valby  
Tlf. 36 44 22 66  
Fax 36 44 01 41  
Girokonto 6 00 08 86

**BR DEUTSCHLAND**

**Bundesanzeiger Verlag**

Breite Straße  
Postfach 10 80 06  
5000 Köln 1  
Tel. (0221) 20 29-0  
Fernschreiber:  
ANZEIGER BONN 8 882 595  
Fax 20 29 278

**GREECE**

**G.C. Eleftheroudakis SA**

International Bookstore  
Nikis Street 4  
10563 Athens  
Tel. (01) 322 63 23  
Telex 219410 ELEFT  
Fax 323 98 21

**ESPAÑA**

**Boletín Oficial del Estado**

Trafalgar, 27  
28010 Madrid  
Tel. (91) 446 60 00

**Mundi-Prensa Libros, S.A.**

Castelló, 37  
28001 Madrid  
Tel. (91) 431 33 99 (Libros)  
431 32 22 (Suscripciones)  
435 36 37 (Dirección)  
Télex 49370-MPLI-E  
Fax (91) 275 39 98

Sucursal:

**Librería Internacional AEDOS**  
Consejo de Ciento, 391  
08009 Barcelona  
Tel. (93) 301 86 15  
Fax (93) 317 01 41

Generalitat de Catalunya:

**Librería Rambla dels estudis**  
Rambla, 118 (Palau Moja)  
08002 Barcelona  
Tel. (93) 302 68 35  
302 64 62

**FRANCE**

**Journal officiel**  
**Service des publications**  
**des Communautés européennes**  
26, rue Desaix  
75727 Paris Cedex 15  
Tél. (1) 40 58 75 00  
Fax (1) 40 58 75 74

**IRELAND**

**Government Publications Sales Office**

Sun Alliance House  
Molesworth Street  
Dublin 2  
Tel. 71 03 09

or by post

**Government Stationery Office**

**EEC Section**

6th floor  
Bishop Street  
Dublin 8  
Tel. 78 16 66  
Fax 78 06 45

**ITALIA**

**Licosa Spa**

Via Benedetto Fortini, 120/10  
Casella postale 552  
50125 Firenze  
Tel. (055) 64 54 15  
Fax 64 12 57  
Telex 570466 LICOSA I  
CCP 343 509

Subagenti:

**Libreria scientifica Lucio de Biasio - AEIOU**

Via Meravigli, 16  
20123 Milano  
Tel. (02) 80 76 79

**Herder Editrice e Libreria**

Piazza Montecitorio, 117-120  
00186 Roma  
Tel. (06) 679 46 28/679 53 04

**Libreria giuridica**

Via 12 Ottobre, 172/R  
16121 Genova  
Tel. (010) 59 56 93

**GRAND-DUCHÉ DE LUXEMBOURG**

Abonnements seulement  
Subscriptions only  
Nur für Abonnements

**Messageries Paul Kraus**

11, rue Christophe Plantin  
2339 Luxembourg  
Tél. 499 88 88  
Télex 2515  
CCP 49242-63

**NEDERLAND**

**SDU uitgeverij**

Christoffel Plantijnstraat 2  
Postbus 20014  
2500 EA 's-Gravenhage  
Tel. (070) 78 98 80 (bestellingen)  
Fax (070) 47 63 51

**PORTUGAL**

**Imprensa Nacional**

Casa da Moeda, EP  
Rua D. Francisco Manuel de Melo, 5  
1092 Lisboa Codex  
Tel. (01) 69 34 14

**Distribuidora de Livros Bertrand, Ld.ª**

**Grupo Bertrand, SARL**

Rua das Terras dos Vales, 4-A  
Apartado 37  
2700 Amadora Codex  
Tel. (01) 493 90 50 - 494 87 88  
Telex 15798 BERDIS  
Fax 491 02 55

**UNITED KINGDOM**

**HMSO Books (PC 18)**

HMSO Publications Centre  
51 Nine Elms Lane  
London SW8 5DR  
Tel. (01) 873 9090  
Fax GP3 873 8463

Sub-agent:

**Alan Armstrong Ltd**

2 Arkwright Road  
Reading, Berks RG2 0SQ  
Tel. (0734) 75 18 55  
Telex 849937 AAALTD G  
Fax (0734) 75 51 64

**SCHWEIZ / SUISSE / SVIZZERA**

**OSEC**

Stampfenbachstraße 85  
8035 Zürich  
Tel. (01) 365 51 51  
Fax (01) 365 52 21

**ÖSTERREICH**

**Manz'sche Verlags-  
und Universitätsbuchhandlung**

Kohlmarkt 16  
1014 Wien  
Tel. (0222) 531 61-0  
Telex 11 25 00 BOX A  
Fax (0222) 531 61-81

**TÜRKIYE**

**Dünya süper veb ofset A.Ş.**

Narlibahçe Sokak No. 15  
Cağaloğlu  
Istanbul  
Tel. 512 01 90  
Telex 23822 DSVO-TR

**UNITED STATES OF AMERICA**

**UNIPUB**

4611-F Assembly Drive  
Lanham, MD 20706-4391  
Tel. Toll Free (800) 274 4888  
Fax (301) 459 0056  
Telex 7108260418

**CANADA**

**Renouf Publishing Co., Ltd**

61 Sparks Street  
Ottawa  
Ontario K1P 5R1  
Tel. Toll Free 1 (800) 267 41 64  
Ottawa Region (613) 238 89 85-6  
Telex 053-4936

**JAPAN**

**Kinokuniya Company Ltd**

17-7 Shinjuku 3-Chome  
Shinjuku-ku  
Tokyo 160-91  
Tel. (03) 354 01 31

**Journal Department**

PO Box 55 Chitose  
Tokyo 156  
Tel. (03) 439 01 24

**SVERIGE**

**BTJ**

Box 200  
22100 Lund  
Tel. (046) 18 00 00  
Fax (046) 18 01 25

AUTRES PAYS  
OTHER COUNTRIES  
ANDERE LÄNDER

**Office des publications officielles  
des Communautés européennes**

2, rue Mercier  
L-2985 Luxembourg  
Tél. 49 92 81  
Télex PUBOF LU 1324 b  
Fax 48 85 73  
CC bancaire BIL 8-109/6003/700

Price (excl. VAT) in Luxembourg: Single copy ECU 5 • Subscription ECU 51



OFICINA DE PUBLICACIONES OFICIALES DE LAS COMUNIDADES EUROPEAS  
KONTOR ET FOR DE EUROPÆISKE FÆLLESSKABERS OFFICIELLE PUBLIKATIONER  
AMT FÜR AMTLICHE VERÖFFENTLICHUNGEN DER EUROPÄISCHEN GEMEINSCHAFTEN  
ΥΠΗΡΕΣΙΑ ΕΠΙΣΗΜΩΝ ΕΚΔΟΣΕΩΝ ΤΩΝ ΕΥΡΩΠΑΪΚΩΝ ΚΟΙΝΟΤΗΤΩΝ  
OFFICE FOR OFFICIAL PUBLICATIONS OF THE EUROPEAN COMMUNITIES  
OFFICE DES PUBLICATIONS OFFICIELLES DES COMMUNAUTÉS EUROPÉENNES  
UFFICIO DELLE PUBBLICAZIONI UFFICIALI DELLE COMUNITÀ EUROPEE  
BUREAU VOOR OFFICIELE PUBLIKATIES DER EUROPESE GEMEENSCHAPPEN  
SERVIÇO DAS PUBLICAÇÕES OFICIAIS DAS COMUNIDADES EUROPEIAS

ISSN 1010-2779

L - 2985 Luxembourg

Catalogue number: CA-CB-91-011-EN-C