

Consumer price index

1 □ 1990 Monthly

PRICES: The inflation rate for the EC in 1989 is 5.4%.

Between November and December 1989 the CPI for the Community as a whole rose by 0.3%. Important rises were recorded in Greece (1.8%) and Portugal (1.1%).

Increases in all other EC countries were moderate or weak: Italy 0.5%, Belgium and Spain 0.4%, Germany and the UK 0.3%, France and Luxemburg * 0.1%, Denmark and the Netherlands 0.0%.

The inflation rate for the Community as a whole in 1989 was 5.4% (December 1989 compared with December 1988); this rate was 4.4% in 1988, 3.4% in 1987 and 2.8% in 1986.

The table below shows the increase of the inflation rates in all the member states, exception made for Portugal, which recorded an inflation that was slightly lower than that in 1988.

| | December | | | December | |
|-------------|----------|-------|----------------|----------|-------|
| | 89/88 | 88/87 | | 89/88 | 88/87 |
| Netherlands | 1.3 | 1.2 | Denmark | 4.8 | 4.5 |
| Germany | 3.0 | 1.8 | Italy | 6.4 | 5.4 |
| Belgium | 3.6 | 1.9 | Spain | 6.9 | 5.9 |
| France | 3.6 | 3.1 | United Kingdom | 7.7 | 6.8 |
| Luxemburg | 3.9 | 1.9 | Portugal | 11.6 | 11.7 |
| Ireland | 4.6 | 2.7 | Greece | 14.8 | 14.0 |

The inflation rate over the last 12 months for the USA was 4.6% (1988 : 4.4%) and that for Japan 2.6% (1988 : 1.0%).

The rates for some other non-EC countries were as follows: Austria 2.9%, Switzerland 5.0%, Norway 4.2%, Sweden 6.6%, Finland 6.5%, Canada 5.1%.

* The figure for Luxemburg was estimated by Eurostat.

N.B.: Starting with this issue the tables concerning the CPI EXCLUDING TOBACCO and the TOBACCO INDICES will no longer appear in this bulletin. They will be published in future quarterly in a supplement of this bulletin.

OFICINA ESTADÍSTICA DE LAS COMUNIDADES EUROPEAS
DE EUROPÆISKE FÆLLESSKABERS STATISTISKE KONTOR
STATISTISCHES AMT DER EUROPÄISCHEN GEMEINSCHAFTEN
ΣΤΑΤΙΣΤΙΚΗ ΥΠΗΡΕΣΙΑ ΤΩΝ ΕΥΡΩΠΑΪΚΩΝ ΚΟΙΝΟΤΗΤΩΝ
STATISTICAL OFFICE OF THE EUROPEAN COMMUNITIES
OFFICE STATISTIQUE DES COMMUNAUTÉS EUROPÉENNES
ISTITUTO STATISTICO DELLE COMUNITÀ EUROPEE
BUREAU VOOR DE STATISTIEK DER EUROPESE GEMEENSCHAPPEN
SERVIÇO DE ESTATÍSTICA DAS COMUNIDADES EUROPEIAS

L-2920 Luxembourg – Tél. 43011 – Télex : Comeur Lu 3423
B-1049 Bruxelles, bâtiment Berlaymont, rue de la Loi 200 (bureau de liaison) – Tél. 235 1111

The information included in this bulletin has been taken from the Cronos data bank, which is accessible via the different host companies. For all information about these host companies contact Eurostat in Luxembourg, tel. 4301-4567.

To obtain specifications of the principal characteristics of the series contained in this bulletin contact Luxembourg:

Mr Nijenhuis, tel. 4301-3202

Mr Desantis, tel. 4301-3511

VERBRAUCHERPREISE

CONSUMER PRICES

PRIX A LA CONSOMMATION

GESAMTINDEX

GENERAL INDEX

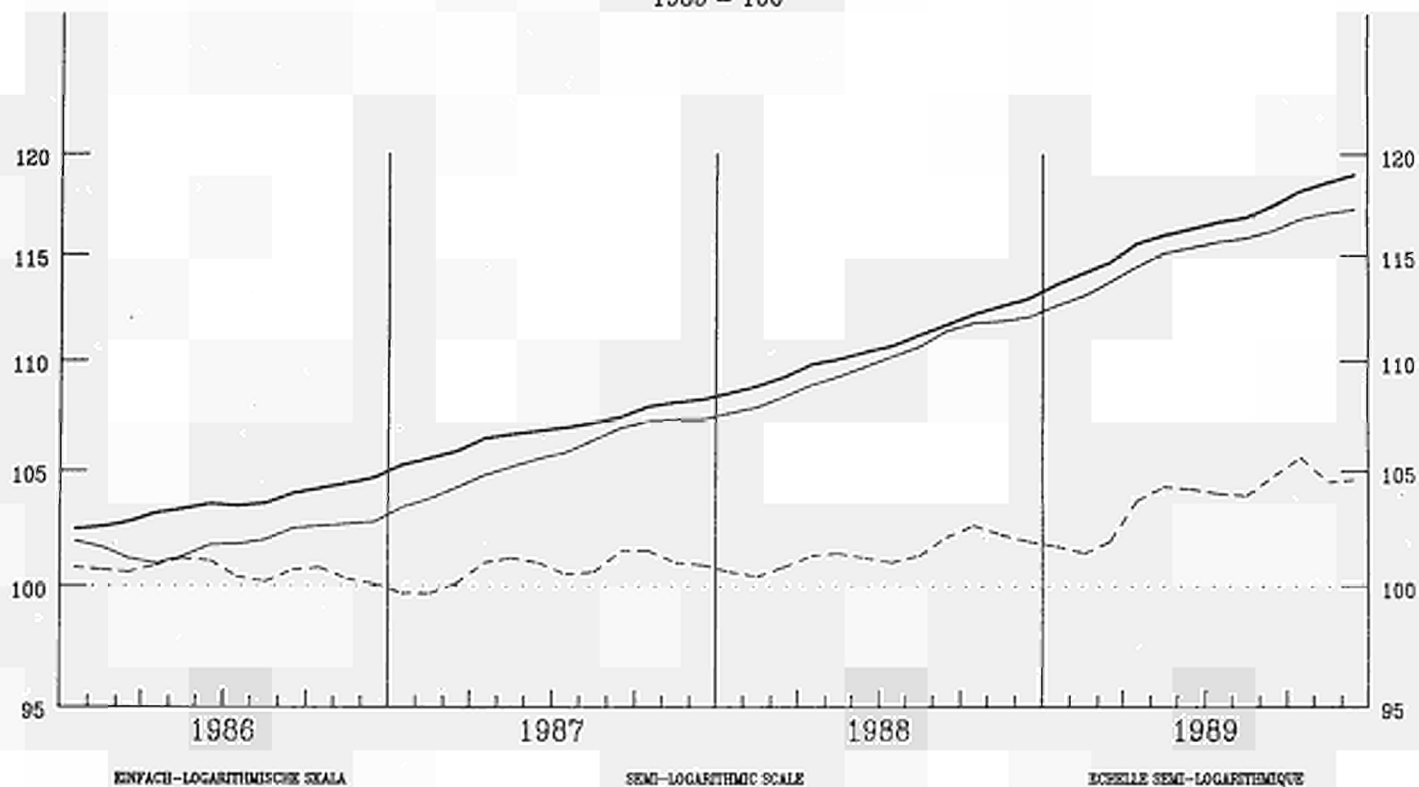
INDICE GENERAL

— USA

— EUR 12

- - - JAPAN

1985 = 100



VERÄNDERUNG % T/T-12

VARIATION % T/T-12

VARIATION % T/T-12

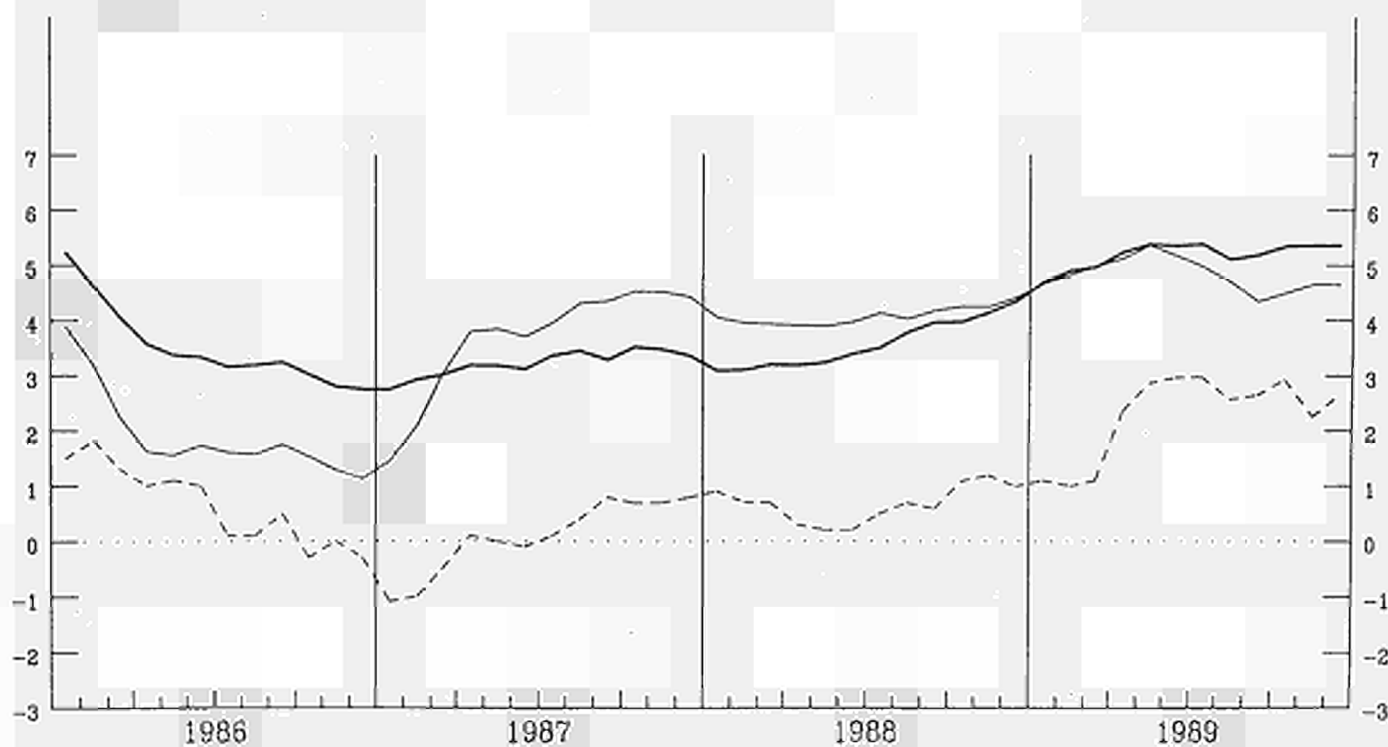


TABLE I

CONSUMER PRICES

GENERAL INDEX

| | EUR 12 | B | DK | D | GR | E | F | IRL | I | L | NL | P | UK | |
|----------------|---|-------|-------|-------|-------|-------|--------|----------|--------|--------|-------|-------|-------|--|
| | Price indices | | | | | | | 1985=100 | | | | | | |
| Annual average | | | | | | | | | | | | | | |
| 1986 | 103.5 | 101.3 | 103.6 | 99.9 | 123.0 | 108.8 | 102.7 | 103.8 | 105.8 | 100.3 | 100.2 | 111.7 | 103.4 | |
| 1987 | 106.9 | 102.9 | 107.8 | 100.1 | 143.2 | 114.5 | 105.9 | 107.1 | 110.9 | 100.2 | 99.8 | 122.2 | 107.7 | |
| 1988 | 110.7 | 104.1 | 112.7 | 101.4 | 162.5 | 120.0 | 108.7 | 109.4 | 116.5 | 101.7 | 100.6 | 133.9 | 113.0 | |
| 1989 | 116.4 | 107.3 | 118.1 | 104.2 | 184.9 | 128.2 | 112.5P | 113.9 | 123.8 | 105.1 | 101.7 | 150.8 | 121.8 | |
| 1988 | | | | | | | | | | | | | | |
| December | 112.9 | 105.0 | 114.7 | 102.1 | 174.1 | 123.5 | 110.1 | : | 119.5 | 102.6 | 101.3 | 145.9 | 116.6 | |
| 1989 | | | | | | | | | | | | | | |
| January | 113.6 | 105.4 | 115.2 | 103.0 | 173.6 | 124.7 | 110.6 | : | 120.3 | 103.4 | 100.4 | 143.4 | 117.3 | |
| February | 114.2 | 105.9 | 116.0 | 103.4 | 172.8 | 125.0 | 110.9 | 112.0 | 121.3 | 103.7 | 100.7 | 145.4 | 118.2 | |
| March | 114.7 | 106.1 | 116.7 | 103.5 | 177.5 | 125.7 | 111.2 | : | 122.0 | 104.0 | 101.1 | 146.7 | 118.7 | |
| April | 115.6 | 106.8 | 117.4 | 104.1 | 180.4 | 126.1 | 111.9 | : | 122.6 | 104.3 | 101.6 | 148.2 | 120.8 | |
| May | 116.0 | 106.9 | 118.2 | 104.3 | 181.0 | 126.3 | 112.3 | 113.1 | 123.2 | 104.7 | 101.6 | 148.5 | 121.6 | |
| June | 116.3 | 107.1 | 117.9 | 104.4 | 183.9 | 127.0 | 112.5 | : | 123.7 | 105.0 | 101.5 | 149.5 | 122.0 | |
| July | 116.6 | 107.5 | 117.9 | 104.3 | 183.6 | 129.0 | 112.8 | : | 123.9 | 105.3 | 101.7 | 151.0 | 122.1 | |
| August | 116.9 | 107.8 | 118.6 | 104.2 | 184.1 | 129.3 | 113.0 | 114.8 | 124.2 | 105.5 | 102.0 | 153.6 | 122.4 | |
| September | 117.5 | 108.4 | 119.0 | 104.3 | 190.7 | 130.7 | 113.2 | : | 124.8 | 105.8 | 102.5 | 153.9 | 123.3 | |
| October | 118.2 | 108.5 | 119.7 | 104.7 | 194.6 | 131.2 | 113.7 | : | 126.0 | 106.4 | 102.6 | 154.7 | 124.2 | |
| November | 118.6P | 108.4 | 120.2 | 104.9 | 196.3 | 131.5 | 113.9 | 115.6 | 126.5P | 106.6 | 102.6 | 156.3 | 125.3 | |
| December | 119.0P | 108.8 | 120.2 | 105.2 | 199.9 | 132.0 | 114.1P | : | 127.1P | 106.7E | 102.6 | 158.0 | 125.6 | |
| | Rates of increase over one month (IRL 3 months) | | | | | | | (T/T-1) | | | | | | |
| 1988 | | | | | | | | | | | | | | |
| Dec./Nov. | 0.3 | 0.4 | 0.0 | 0.3 | 1.1 | 0.8 | 0.2 | : | 0.3 | 0.0 | -0.1 | 1.2 | 0.3 | |
| 1989 | | | | | | | | | | | | | | |
| Jan/Dec | 0.6 | 0.4 | 0.5 | 0.9 | -0.3 | 1.0 | 0.4 | : | 0.7 | 0.7 | -0.9 | 1.3 | 0.6 | |
| Feb./Jan. | 0.5 | 0.4 | 0.7 | 0.4 | -0.4 | 0.2 | 0.3 | 1.4 | 0.8 | 0.3 | 0.3 | 1.4 | 0.7 | |
| March/Feb. | 0.4 | 0.2 | 0.6 | 0.1 | 2.7 | 0.6 | 0.3 | : | 0.6 | 0.3 | 0.4 | 0.9 | 0.4 | |
| April/March | 0.8 | 0.7 | 0.6 | 0.6 | 1.6 | 0.3 | 0.6 | : | 0.5 | 0.3 | 0.5 | 1.1 | 1.8 | |
| May/April | 0.4 | 0.1 | 0.7 | 0.2 | 0.3 | 0.1 | 0.4 | 1.0 | 0.5 | 0.4 | 0.0 | 0.2 | 0.6 | |
| June/May | 0.3 | 0.2 | -0.3 | 0.1 | 1.6 | 0.5 | 0.1 | : | 0.4 | 0.3 | -0.1 | 0.7 | 0.3 | |
| July/June | 0.3 | 0.3 | 0.0 | -0.1 | -0.2 | 1.6 | 0.3 | : | 0.2 | 0.3 | 0.2 | 1.0 | 0.1 | |
| August/July | 0.2 | 0.3 | 0.6 | -0.1 | 0.3 | 0.2 | 0.2 | 1.5 | 0.2 | 0.1 | 0.3 | 1.8 | 0.3 | |
| Sept./August | 0.5 | 0.5 | 0.3 | 0.1 | 3.6 | 1.1 | 0.2 | : | 0.5 | 0.3 | 0.5 | 0.2 | 0.7 | |
| Oct./Sept. | 0.6 | 0.1 | 0.6 | 0.4 | 2.0 | 0.4 | 0.4 | : | 1.0 | 0.6 | 0.1 | 0.5 | 0.8 | |
| Nov./Oct. | 0.4P | -0.1 | 0.5 | 0.2 | 0.9 | 0.2 | 0.2 | 0.7 | 0.4P | 0.2 | 0.0 | 1.0 | 0.9 | |
| Dec./Nov. | 0.3P | 0.4 | 0.0 | 0.3 | 1.8 | 0.4 | 0.1P | : | 0.5P | 0.1E | 0.0 | 1.1 | 0.3 | |
| | Rates of increase over 12 months | | | | | | | (T/T-12) | | | | | | |
| 1988/87 | | | | | | | | | | | | | | |
| December | 4.4 | 1.9 | 4.5 | 1.8 | 14.0 | 5.9 | 3.1 | : | 5.4 | 1.9 | 1.2 | 11.7 | 6.8 | |
| 1989/88 | | | | | | | | | | | | | | |
| January | 4.7 | 2.4 | 4.6 | 2.3 | 13.8 | 6.3 | 3.3 | : | 5.5 | 2.5 | 0.9 | 12.2 | 7.5 | |
| February | 4.9 | 2.6 | 4.4 | 2.5 | 13.8 | 6.2 | 3.4 | 3.4 | 5.9 | 2.7 | 1.0 | 12.1 | 7.8 | |
| March | 5.0 | 2.8 | 4.7 | 2.6 | 13.5 | 6.0 | 3.4 | : | 6.1 | 2.8 | 0.9 | 12.4 | 7.9 | |
| April | 5.2 | 3.0 | 4.9 | 2.9 | 13.0 | 6.8 | 3.6 | : | 6.3 | 3.2 | 1.1 | 13.2 | 8.0 | |
| May | 5.4 | 3.0 | 4.8 | 3.0 | 13.1 | 7.0 | 3.7 | 3.8 | 6.5 | 3.5 | 1.0 | 13.0 | 8.3 | |
| June | 5.4 | 3.0 | 4.5 | 2.9 | 13.4 | 7.1 | 3.6 | : | 6.5 | 3.6 | 1.0 | 13.2 | 8.3 | |
| July | 5.4 | 3.0 | 5.0 | 2.8 | 13.5 | 7.5 | 3.5 | : | 6.5 | 3.4 | 1.1 | 13.3 | 8.2 | |
| August | 5.1 | 3.2 | 4.9 | 2.8 | 13.6 | 6.7 | 3.4 | 4.5 | 6.3 | 3.4 | 1.1 | 13.7 | 7.3 | |
| September | 5.2 | 3.5 | 4.7 | 2.8 | 14.3 | 6.8 | 3.4 | : | 6.3 | 3.6 | 1.3 | 12.7 | 7.6 | |
| October | 5.3 | 3.6 | 5.1 | 3.2 | 13.8 | 7.1 | 3.6 | : | 6.5 | 3.9 | 1.3 | 12.3 | 7.3 | |
| November | 5.4P | 3.6 | 4.8 | 3.0 | 14.0 | 7.4 | 3.6 | 4.6 | 6.1P | 3.8 | 1.2 | 11.7 | 7.7 | |
| December | 5.4P | 3.6 | 4.8 | 3.0 | 14.8 | 6.9 | 3.6P | : | 6.4P | 3.9E | 1.3 | 11.6 | 7.7 | |

TABLE II

CONSUMER PRICES

GENERAL INDEX

| | U.S.A | Japan | Switzerland | Austria | Norway | Sweden | Finland | Canada |
|----------------|---|--------|-------------|---------|----------|--------|---------|--------|
| | Price indices | | | | 1985=100 | | | |
| Annual average | | | | | | | | |
| 1986 | 101.9 | 100.6 | 100.8 | 101.7 | 107.2 | 104.2 | 103.6 | 104.1 |
| 1987 | 105.7 | 100.7 | 102.2 | 103.1 | 116.5 | 108.6 | 107.1 | 108.7 |
| 1988 | 110.0 | 101.4 | 104.2 | 105.1 | 124.3 | 114.9 | 112.6 | 113.1 |
| 1989 | 115.3 | 103.7 | 107.4 | 107.8 | 130.0 | 122.3 | 120.0 | 118.7 |
| 1988 | | | | | | | | |
| December | 112.1 | 101.9 | 105.0 | 105.5 | 126.2 | 117.7 | 115.5 | 114.9 |
| 1989 | | | | | | | | |
| January | 112.6 | 101.7 | 105.6 | 106.2 | 127.1 | 119.0 | 116.0 | 115.4 |
| February | 113.1 | 101.4 | 106.1 | 106.6 | 127.6 | 119.7 | 116.6 | 116.2 |
| March | 113.7 | 101.9 | 106.4 | 106.8 | 128.7 | 120.1 | 117.9 | 116.7 |
| April | 114.5 | 103.7 | 106.9 | 107.1 | 129.4 | 121.3 | 119.1 | 117.1 |
| May | 115.1 | 104.3 | 107.0 | 107.3 | 129.8 | 121.8 | 119.5 | 118.3 |
| June | 115.4 | 104.2 | 107.2 | 107.6 | 130.6 | 122.2 | 120.6 | 118.9 |
| July | 115.7 | 104.0 | 106.9 | 108.9 | 130.7 | 122.2 | 120.5 | 119.7 |
| August | 115.9 | 103.9 | 107.3 | 109.3 | 130.3 | 122.7 | 120.6 | 119.8 |
| September | 116.2 | 104.8 | 107.8 | 108.5 | 131.4 | 123.7 | 121.9 | 120.0 |
| October | 116.8 | 105.6 | 108.2 | 108.5 | 131.6 | 124.7 | 122.4 | 120.4 |
| November | 117.1 | 104.5 | 109.5 | 108.1 | 131.6 | 125.0 | 122.3 | 120.8 |
| December | 117.3 | 104.6P | 110.2 | 108.5 | 131.5 | 125.4 | 123.0 | 120.7 |
| | Rates of increase over one month (IRL 3 months) | | | | (T/T-1) | | | |
| 1988 | | | | | | | | |
| Dec./Nov. | 0.2 | 0.3 | 0.1 | 0.0 | 0.0 | 0.2 | 0.9 | 0.0 |
| 1989 | | | | | | | | |
| Jan/Dec | 0.5 | -0.2 | 0.6 | 0.7 | 0.7 | 1.2 | 0.5 | 0.5 |
| Feb./Jan. | 0.4 | -0.3 | 0.5 | 0.5 | 0.4 | 0.5 | 0.5 | 0.7 |
| March/Feb. | 0.6 | 0.5 | 0.3 | 0.1 | 0.9 | 0.4 | 1.1 | 0.5 |
| April/March | 0.7 | 1.8 | 0.5 | 0.3 | 0.5 | 1.0 | 1.0 | 0.3 |
| May/April | 0.6 | 0.6 | 0.1 | 0.2 | 0.3 | 0.4 | 0.4 | 1.0 |
| June/May | 0.2 | -0.1 | 0.2 | 0.3 | 0.6 | 0.3 | 0.9 | 0.5 |
| July/June | 0.2 | -0.2 | -0.3 | 1.1 | 0.1 | 0.0 | -0.1 | 0.7 |
| August/July | 0.2 | -0.1 | 0.3 | 0.4 | -0.3 | 0.4 | 0.1 | 0.1 |
| Sept./August | 0.3 | 0.9 | 0.4 | -0.7 | 0.9 | 0.8 | 1.1 | 0.1 |
| Oct./Sept. | 0.5 | 0.8 | 0.4 | 0.0 | 0.1 | 0.8 | 0.4 | 0.4 |
| Nov./Oct. | 0.2 | -1.0 | 1.2 | -0.4 | 0.0 | 0.2 | -0.1 | 0.3 |
| Dec./Nov. | 0.2 | 0.1P | 0.7 | 0.4 | -0.1 | 0.3 | 0.6 | -0.1 |
| | Rates of increase over 12 months | | | | (T/T-12) | | | |
| 1988/87 | | | | | | | | |
| December | 4.4 | 1.0 | 2.0 | 1.9 | 5.6 | 6.0 | 6.6 | 4.0 |
| 1989/88 | | | | | | | | |
| January | 4.7 | 1.1 | 2.3 | 2.2 | 5.2 | 6.6 | 5.8 | 4.3 |
| February | 4.8 | 1.0 | 2.3 | 2.3 | 4.9 | 6.4 | 6.0 | 4.6 |
| March | 5.0 | 1.1 | 2.4 | 2.2 | 4.3 | 6.3 | 6.6 | 4.6 |
| April | 5.1 | 2.4 | 2.7 | 2.4 | 4.6 | 6.4 | 6.9 | 4.6 |
| May | 5.4 | 2.9 | 2.9 | 2.8 | 4.7 | 6.5 | 6.4 | 5.0 |
| June | 5.2 | 3.0 | 3.0 | 2.5 | 4.7 | 6.6 | 6.8 | 5.4 |
| July | 5.0 | 3.0 | 2.9 | 2.5 | 4.8 | 6.1 | 6.7 | 5.4 |
| August | 4.7 | 2.6 | 3.0 | 2.6 | 4.6 | 6.3 | 6.6 | 5.2 |
| September | 4.3 | 2.6 | 3.4 | 2.4 | 4.2 | 6.4 | 6.7 | 5.2 |
| October | 4.5 | 2.9 | 3.6 | 2.8 | 4.2 | 6.4 | 7.1 | 5.1 |
| November | 4.7 | 2.3 | 4.3 | 2.5 | 4.3 | 6.5 | 6.8 | 5.2 |
| December | 4.6 | 2.6P | 5.0 | 2.9 | 4.2 | 6.6 | 6.5 | 5.1 |

EXPLANATORY NOTES

METHODOLOGY

The consumer price indices given here are the national indices which have different names in each country. As far as trends are concerned, the general index published by EUROSTAT always corresponds to the general index published by the country. The component items of this general index are groups of national indices aggregated according to a harmonized classification conforming to the ESA (European System of Integrated Economic Accounts). For these groups, the price trends correspond to the trends noted by the national indices for the same classification field. The field covered by the general index varies according to country: as regards the population concerned (specific income bracket, certain socio-professional categories or total households), the geographical areas used (capital, urban areas, country as a whole, etc.) or differences in treatments of expenditure on rent, health care, etc... Finally, there is no uniform method for seasonal adjustments. A fixed base system is used in some countries, whereas in others a chain system is used (variable weightings). The reference years used at national level for the indices vary according to country. For ease of comparison, EUROSTAT has chosen 1985 as the common year for the presentation of these indices.

THE CALCULATION OF THE EUR-12 INDEX

The Eur-12 index as calculated by EUROSTAT is a weighted average of national price indices. The weight used is the proportion of each country in the final consumption of households for EUR-12. The values of this consumption in national currency are converted into purchasing power standard (PPS); for this purpose the purchasing power parities of the G.D.P. are used. Up to 1987 purchasing power parities are those which result from the 1980 enquiry, from 1988 onwards they are those from the 1985 enquiry. The index calculated is a chain index of the "Laspeyres" type with weights changing each year. However, the weights are lagged by three years since the national accounts data needed become available only after three years. For example: the weights used for 1989 are those of 1986, for 1988 those of 1985. Moreover, national accounts data are often revised leading to revisions of the consumption weights. In order to avoid continuous modifications in the EUR-12 index for previous periods, EUROSTAT has decided to "freeze" the weights which are used. Thus the EUR-12 index will not be affected by revisions of the national accounts. However when Member States carry out major revisions in the price series for past years, EUR-12 data will be calculated using these new series.

**Venta y suscripciones • Salg og abonnement • Verkauf und Abonnement • Πωλήσεις και συνδρομές
Sales and subscriptions • Vente et abonnements • Vendita e abbonamenti
Verkoop en abonnementen • Venda e assinaturas**

BELGIQUE / BELGIË

Moniteur belge / Belgisch Staatsblad

Rue de Louvain 42 / Leuvenseweg 42
1000 Bruxelles / 1000 Brussel
Tél. (02) 512 00 26
Fax 511 01 84
CCP / Postrekening 000-2005502-27

Autres distributeurs / Overige verkooppunten

**Librairie européenne /
Europese Boekhandel**

Avenue Albert Jonnart 50 /
Albert Jonnartlaan 50
1200 Bruxelles / 1200 Brussel
Tél. (02) 734 02 81
Fax 735 08 60

Jean De Lannoy

Avenue du Roi 202 / Koningslaan 202
1060 Bruxelles / 1060 Brussel
Tél. (02) 538 51 69
Télex 63220 UNBOOK B

CREDOC

Rue de la Montagne 34 / Bergstraat 34
Bte 11 / Bus 11
1000 Bruxelles / 1000 Brussel

DANMARK

J. H. Schultz Information A/S

EF-Publikation

Ottillavej 18
2500 Valby
Tlf. 36 44 22 66
Fax 36 44 01 41
Girokonto 6 00 08 86

BR DEUTSCHLAND

Bundesanzeiger Verlag

Breite Straße
Postfach 10 80 06
5000 Köln 1
Tel. (0221) 20 29-0
Fernschreiber:
ANZEIGER BONN 8 882 595
Fax 20 29 278

GREECE

G.C. Eleftheroudakis SA

International Bookstore
Nikis Street 4
10563 Athens
Tel. (01) 322 63 23
Telex 219410 ELEF
Fax 323 98 21

ESPAÑA

Boletín Oficial del Estado

Trafalgar, 27
28010 Madrid
Tel. (91) 446 60 00

Mundi-Prensa Libros, S.A.

Castelló, 37
28001 Madrid
Tel. (91) 431 33 99 (Libros)
431 32 22 (Suscripciones)
435 36 37 (Dirección)

Télex 49370-MPLI-E
Fax (91) 275 39 98

Sucursal:

Librería Internacional AEDOS

Consejo de Ciento, 391
08009 Barcelona
Tel. (93) 301 86 15
Fax (93) 317 01 41

Generalitat de Catalunya:

Librería Rambla dels estudis

Rambla, 118 (Palau Moja)
08002 Barcelona
Tel. (93) 302 68 35
302 64 62

FRANCE

**Journal officiel
Service des publications
des Communautés européennes**

26, rue Desaix
75727 Paris Cedex 15
Tél. (1) 40 58 75 00
Fax (1) 40 58 75 74

IRELAND

Government Publications Sales Office

Sun Alliance House
Molesworth Street
Dublin 2
Tel. 71 03 09

or by post

Government Stationery Office

EEC Section

6th floor
Bishop Street
Dublin 8
Tel. 78 16 66
Fax 78 06 45

ITALIA

Licosa Spa

Via Benedetto Fortini, 120/10
Casella postale 552
50125 Firenze
Tel. (055) 64 54 15
Fax 64 12 57
Telex 570466 LICOSA I
CCP 343 509

Subagenti:

Libreria scientifica Lucio de Biasio - AEIOU

Via Meravigli, 16
20123 Milano
Tel. (02) 80 76 79

Herder Editrice e Libreria

Piazza Montecitorio, 117-120
00186 Roma
Tel. (06) 679 46 28/679 53 04

Libreria giuridica

Via 12 Ottobre, 172/R
16121 Genova
Tel. (010) 59 56 93

GRAND-DUCHÉ DE LUXEMBOURG

Abonnements seulement

Subscriptions only

Nur für Abonnements

Messageries Paul Kraus

11, rue Christophe Plantin
2339 Luxembourg
Tél. 499 88 88
Télex 2515
CCP 49242-63

NEDERLAND

SDU uitgeverij

Christoffel Plantijnstraat 2
Postbus 20014
2500 EA 's-Gravenhage
Tel. (070) 78 98 80 (bestellingen)
Fax (070) 47 63 51

PORTUGAL

Imprensa Nacional

Casa da Moeda, EP
Rua D. Francisco Manuel de Melo, 5
1092 Lisboa Codex
Tel. (01) 69 34 14

Distribuidora de Livros Bertrand, Ld.ª

Grupo Bertrand, SARRL
Rua das Terras dos Vales, 4-A
Apartado 37
2700 Amadora Codex
Tel. (01) 493 90 50 - 494 87 88
Telex 15798 BERDIS
Fax 491 02 55

UNITED KINGDOM

HMSO Books (PC 16)

HMSO Publications Centre
51 Nine Elms Lane
London SW8 5DR
Tel. (01) 873 9090
Fax GP3 873 8463

Sub-agent:

Alan Armstrong Ltd

2 Arkwright Road
Reading, Berks RG2 0SQ
Tel. (0734) 75 18 55
Telex 849937 AALTD G
Fax (0734) 75 51 64

SCHWEIZ / SUISSE / SVIZZERA

OSEC

Stampfenbachstraße 85
8035 Zürich
Tel. (01) 365 51 51
Fax (01) 365 52 21

ÖSTERREICH

**Manz'sche Verlags-
und Universitätsbuchhandlung**

Kohlmarkt 16
1014 Wien
Tel. (0222) 531 61-0
Telex 11 25 00 BOX A
Fax (0222) 531 61-81

TÜRKIYE

Dünya süper veb ofset A.Ş.

Narlibahçe Sokak No. 15
Cağaloğlu
Istanbul
Tel. 512 01 90
Telex 23822 DSVO-TR

UNITED STATES OF AMERICA

UNIPUB

4611-F Assembly Drive
Lanham, MD 20706-4391
Tel. Toll Free (800) 274 4888
Fax (301) 459 0056
Telex 7108260418

CANADA

Renouf Publishing Co., Ltd

61 Sparks Street
Ottawa
Ontario K1P 5R1
Tel. Toll Free 1 (800) 267 41 64
Ottawa Region (613) 238 89 85-6
Telex 053-4936

JAPAN

Kinokuniya Company Ltd

17-7 Shinjuku 3-Chome
Shinjuku-ku
Tokyo 160-91
Tel. (03) 354 01 31

Journal Department

PO Box 55 Chitose
Tokyo 156
Tel. (03) 439 01 24

SVERIGE

BTJ

Box 200
22100 Lund
Tel. (046) 18 00 00
Fax (046) 18 01 25

**AUTRES PAYS
OTHER COUNTRIES
ANDERE LÄNDER**

**Office des publications officielles
des Communautés européennes**

2, rue Mercier
L-2985 Luxembourg
Tél. 49 92 81
Télex PUBOF LU 1324 b
Fax 48 85 73
CC bancaire BIL 8-109/6003/700

1985
1985
1985

Price (excl. VAT) in Luxembourg: Single copy ECU 4.40 • Subscription ECU 46.50



OFICINA DE PUBLICACIONES OFICIALES DE LAS COMUNIDADES EUROPEAS
KONTORET FOR DE EUROPÆISKE FÆLLESSKABERS OFFICIELLE PUBLIKATIONER
AMT FÜR AMTLICHE VERÖFFENTLICHUNGEN DER EUROPÄISCHEN GEMEINSCHAFTEN
ΥΠΗΡΕΣΙΑ ΕΠΙΣΗΜΩΝ ΕΚΔΟΣΕΩΝ ΤΩΝ ΕΥΡΩΠΑΪΚΩΝ ΚΟΙΝΟΤΗΤΩΝ
OFFICE FOR OFFICIAL PUBLICATIONS OF THE EUROPEAN COMMUNITIES
OFFICE DES PUBLICATIONS OFFICIELLES DES COMMUNAUTÉS EUROPÉENNES
UFFICIO DELLE PUBBLICAZIONI UFFICIALI DELLE COMUNITÀ EUROPEE
BUREAU VOOR OFFICIELE PUBLIKATIES DER EUROPESE GEMEENSCHAPPEN
SERVICO DAS PUBLICAÇÕES OFICIAIS DAS COMUNIDADES EUROPEIAS

ISSN 1010-2779

1985 Luxembourg

Catalogue number: CA-CB-90-001-EN-C