

Consumer price index

11 □ 1989 Monthly

PRICES: Another significant increase for EUR-12 in October (+0.5%).

As in September the rate of increase in the CPI for the Community as a whole was significant (0.5%). Important rises were recorded in Greece (2.0%), in Italy (1.0%) and in the United Kingdom (0.8%), whereas increases in the other EC-countries were as follows: Luxemburg 0.6%, Denmark and Portugal 0.5%, France and Spain 0.4%, Germany 0.3%, Belgium and the Netherlands 0.1%.

The USA reported an increase of 0.5% and Japan 1.0%.

The inflation rate over 12 months for the EC as a whole remained at 5.3% (October 89 compared with October 88).

The annual rates for the member states are:

Netherlands	1.3%	Denmark	5.1%
Germany	3.1% (1)	Italy	6.5%
France	3.5%	Spain	7.1%
Belgium	3.6%	United Kingdom	7.4%
Luxemburg	3.9%	Portugal	12.3%
Ireland	4.5%(2)	Greece	13.8%

The corresponding rates for some non EC countries are: USA 4.5%, Japan 3.1%, Switzerland 3.6%, Austria 2.8%, Norway 4.2%, Sweden 6.4%, Finland 7.1% and Canada 5.1%.

- (1) Figures for Germany underwent slight modification because of the change of the base year from 1980 to 1985.
- (2) Mid-August 1989/Mid-August 1988.

GENERAL INDEX EXCLUDING TOBACCO

In the framework of the Commission's program "Europe against cancer" Eurostat regularly calculates and publishes an index excluding tobacco products. The aim of this index is to make clear to the public and the social partners the effects of adjustments in taxation on tobacco products which are foreseen in the program "Europe against cancer". See pages 8 and 9 in this bulletin.



OFICINA ESTADÍSTICA DE LAS COMUNIDADES EUROPEAS
DE EUROPÆISKE FÆLLESSKABERS STATISTISKE KONTOR
STATISTISCHES AMT DER EUROPÄISCHEN GEMEINSCHAFTEN
ΣΤΑΤΙΣΤΙΚΗ ΥΠΗΡΕΣΙΑ ΤΩΝ ΕΥΡΩΠΑΪΚΩΝ ΚΟΙΝΟΤΗΤΩΝ
STATISTICAL OFFICE OF THE EUROPEAN COMMUNITIES
OFFICE STATISTIQUE DES COMMUNAUTÉS EUROPÉENNES
ISTITUTO STATISTICO DELLE COMUNITÀ EUROPEE
BUREAU VOOR DE STATISTIEK DER EUROPESE GEMEENSCHAPPEN
SERVIÇO DE ESTATÍSTICA DAS COMUNIDADES EUROPEIAS

L-2920 Luxembourg – Tél. 43011 – Télex: Comeur Lu 3423
B-1049 Bruxelles, bâtiment Berlaymont, rue de la Loi 200 (bureau de liaison) – Tél. 235 11 11

The information included in this bulletin has been taken from the Cronos data bank, which is accessible via the different host companies. For all information about these host companies contact Eurostat in Luxembourg, tel. 4301-4567.

To obtain specifications of the principal characteristics of the series contained in this bulletin contact Luxembourg:

Mr Nijenhuis, tel. 4301-3202

Mr Desantis, tel. 4301-3511

VERBRAUCHERPREISE

CONSUMER PRICES

PRIX A LA CONSOMMATION

GESAMTINDEX

GENERAL INDEX

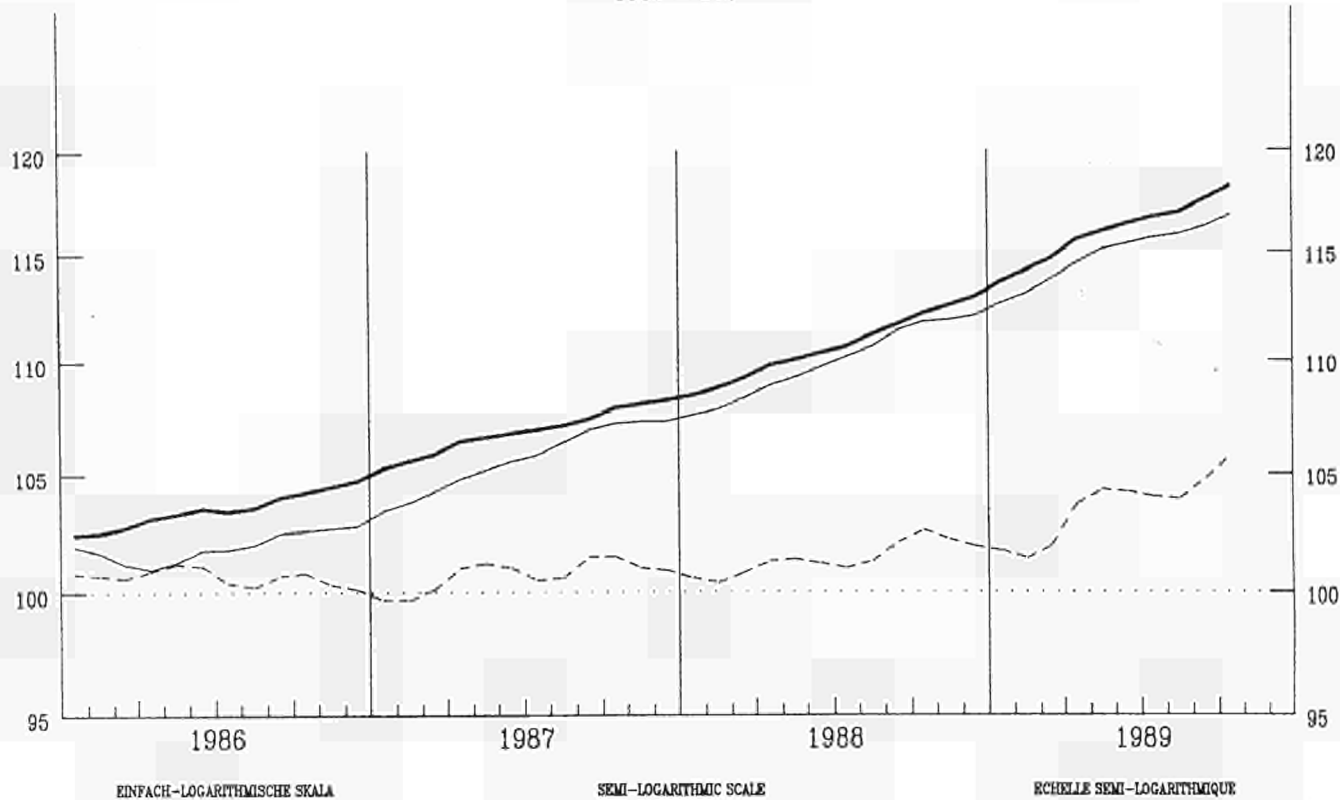
INDICE GENERAL

— USA

— EUR 12

- - - JAPAN

1985 = 100



VERÄNDERUNG % T/T-12

VARIATION % T/T-12

VARIATION % T/T-12

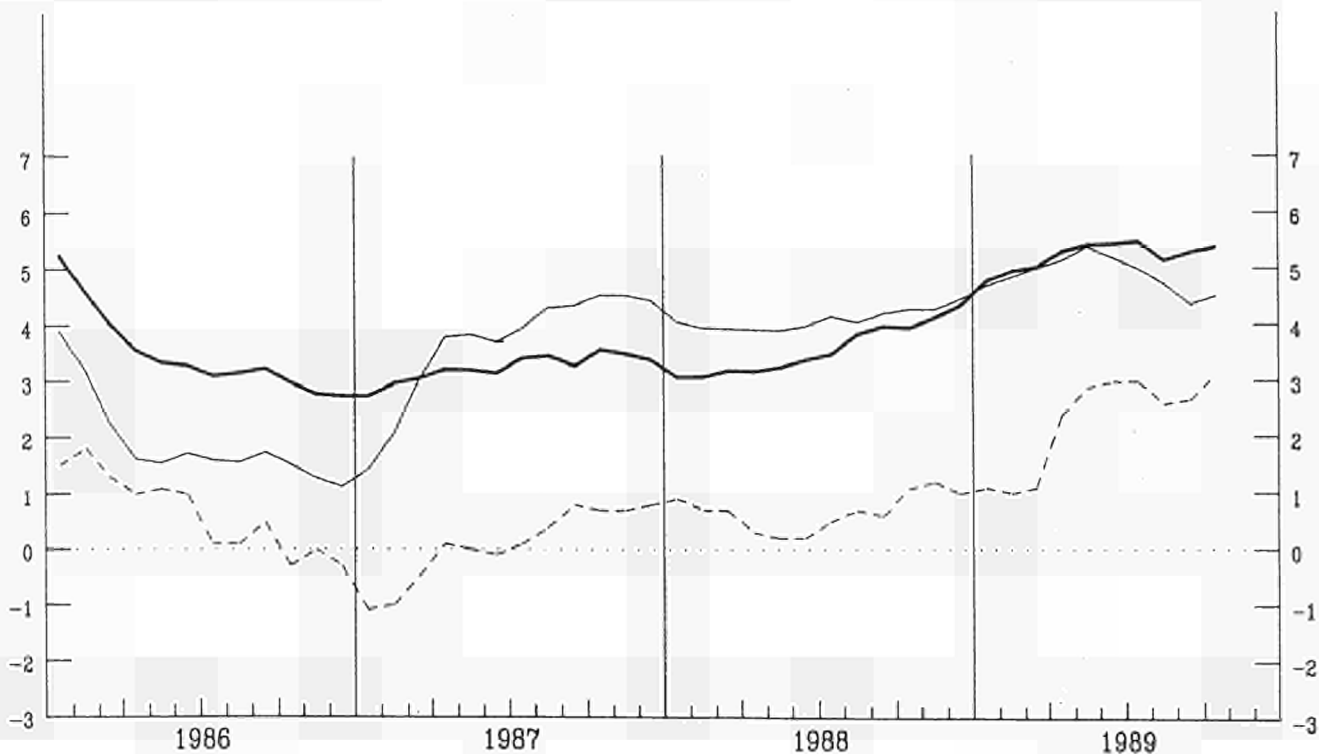


TABLE I

CONSUMER PRICES

GENERAL INDEX

	EUR 12	B	DK	D	GR	E	F	IRL	I	L	NL	P	UK	
	Price indices							1985=100						
Annual average														
1985	100.0	100.0	100.0	100.0	100.0	100.0	100.0	100.0	100.0	100.0	100.0	100.0	100.0	
1986	103.6	101.3	103.6	99.7	123.0	108.8	102.7	103.8	105.8	100.3	100.2	115.0	103.4	
1987	107.0	102.9	107.8	100.0	143.2	114.5	105.9	107.1	110.9	100.2	99.8	125.8	107.7	
1988	110.8	104.1	112.7	101.2	162.5	120.0	108.7	109.4	116.5	101.7	100.6	138.0	113.0	
1988														
October	112.2	104.7	113.9	101.5	171.0	122.5	109.8	:	118.3	102.3	101.3	142.6	115.7	
November	112.5	104.6	114.7	101.8	172.2	122.5	109.9	110.5	119.2	102.6	101.4	144.1	116.3	
December	112.9	105.0	114.7	102.1	174.1	123.5	110.1	:	119.5	102.6	101.3	145.9	116.6	
1989														
January	113.6	105.4	115.2	103.0	173.6	124.7	110.6	:	120.3	103.4	100.4	147.8	117.3	
February	114.2	105.9	115.9	103.4	172.8	125.0	110.9	112.0	121.3	103.7	100.7	149.8	118.2	
March	114.7	106.1	116.7	103.5	177.5	125.7	111.2	:	122.0	104.0	101.1	151.1	118.7	
April	115.6	106.8	117.4	104.1	180.4	126.1	111.9	:	122.6	104.3	101.6	152.7	120.8	
May	116.0	106.9	118.2	104.3	181.0	126.3	112.3	113.1	123.2	104.7	101.6	153.0	121.6	
June	116.4	107.1	117.9	104.4	183.9	127.0	112.5	:	123.7	105.0	101.5	154.0	122.0	
July	116.7	107.5	117.9	104.3	183.6	129.0	112.8	:	123.9	105.3	101.7	155.5	122.1	
August	116.9	107.8	118.6	104.2	184.1	129.3	113.0	114.8	124.2	105.5	102.0	158.3	122.4	
September	117.6P	108.4	119.1	104.3	190.7	130.7	113.2	:	124.8	105.8	102.5	158.6	123.3	
October	118.2P	108.5	119.7	104.6	194.6	131.2	113.7P	:	126.0P	106.4	102.6P	159.4P	124.2	
	Rates of increase over one month (IRL 3 months)							(T/T-1)						
1988														
Oct./Sept.	0.4	0.0	0.2	0.0	2.5	0.1	0.2	:	0.8	0.2	0.1	0.9	1.0	
Nov./Oct.	0.3	-0.1	0.7	0.3	0.7	-0.1	0.1	0.6	0.8	0.3	0.1	1.5	0.5	
Dec./Nov.	0.3	0.4	0.0	0.3	1.1	0.8	0.2	:	0.3	0.0	-0.1	1.2	0.3	
1989														
Jan/Dec	0.6	0.4	0.5	0.9	-0.3	1.0	0.4	:	0.7	0.7	-0.9	1.3	0.6	
Feb./Jan.	0.5	0.4	0.7	0.4	-0.4	0.2	0.3	1.4	0.8	0.3	0.3	1.4	0.7	
March/Feb.	0.4	0.2	0.6	0.1	2.7	0.6	0.3	:	0.6	0.3	0.4	0.9	0.4	
April/March	0.8	0.7	0.6	0.6	1.6	0.3	0.6	:	0.5	0.3	0.5	1.1	1.8	
May/April	0.3	0.1	0.7	0.2	0.3	0.1	0.4	1.0	0.5	0.4	0.0	0.2	0.6	
June/May	0.3	0.2	-0.3	0.1	1.6	0.5	0.1	:	0.4	0.3	-0.1	0.7	0.3	
July/June	0.3	0.3	0.0	-0.1	-0.2	1.6	0.3	:	0.2	0.3	0.2	1.0	0.1	
August/July	0.2	0.3	0.6	-0.1	0.3	0.2	0.2	1.5	0.2	0.1	0.3	1.8	0.3	
Sept./August	0.6P	0.5	0.4	0.1	3.6	1.1	0.2	:	0.5P	0.3	0.5	0.2	0.7	
Oct./Sept.	0.5P	0.1	0.5	0.3	2.0	0.4	0.4P	:	1.0P	0.6	0.1P	0.5P	0.8	
	Rates of increase over 12 months							(T/T-12)						
1988/87														
October	3.9	1.3	4.2	1.4	14.1	5.2	3.0	:	4.9	2.0	0.9	10.7	6.4	
November	4.1	1.6	4.6	1.6	14.1	5.4	3.0	2.7	5.3	2.1	1.1	11.9	6.4	
December	4.3	1.9	4.5	1.8	14.0	5.9	3.1	:	5.4	1.9	1.2	11.7	6.8	
1989/88														
January	4.8	2.4	4.6	2.3	13.8	6.3	3.3	:	5.5	2.5	0.9	12.2	7.5	
February	4.9	2.6	4.4	2.5	13.8	6.2	3.4	3.4	5.9	2.7	1.0	12.1	7.8	
March	5.0	2.8	4.7	2.6	13.5	6.0	3.4	:	6.1	2.8	0.9	12.4	7.9	
April	5.3	3.0	4.9	2.9	13.0	6.8	3.6	:	6.3	3.2	1.1	13.2	8.0	
May	5.4	3.0	4.8	3.0	13.1	7.0	3.7	3.8	6.5	3.5	1.0	13.0	8.3	
June	5.4	3.0	4.5	2.9	13.4	7.1	3.6	:	6.5	3.6	1.0	13.2	8.3	
July	5.5	3.0	5.0	2.8	13.5	7.5	3.5	:	6.5	3.4	1.1	13.3	8.2	
August	5.1	3.2	4.9	2.8	13.6	6.7	3.4	4.5	6.3	3.4	1.1	13.7	7.3	
September	5.3P	3.5	4.7	2.8	14.3	6.8	3.4	:	6.3	3.6	1.3	12.7	7.6	
October	5.3P	3.6	5.1	3.1	13.8	7.1	3.5P	:	6.5P	3.9	1.3P	12.3P	7.3	

TABLE II

	CONSUMER PRICES				GENERAL INDEX			
	U.S.A	Japan	Switzerland	Austria	Norway	Sweden	Finland	Canada
	Price indices				1985=100			
Annual average								
1985	100.0	100.0	100.0	100.0	100.0	100.0	100.0	100.0
1986	101.9	100.6	100.8	101.7	107.2	104.2	103.6	104.1
1987	105.7	100.7	102.2	103.1	116.5	108.6	107.4	108.7
1988	110.0	101.4	104.2	105.1	124.3	114.9	112.7	113.1
1988								
October	111.8	102.6	104.5	105.6	126.2	117.2	114.4	114.5
November	111.9	102.2	104.9	105.5	126.2	117.4	114.6	114.9
December	112.1	101.9	105.0	105.5	126.2	117.7	115.5	114.9
1989								
January	112.6	101.7	105.6	106.2	127.1	119.0	116.0	115.4
February	113.1	101.4	106.1	106.6	127.6	119.7	116.6	116.2
March	113.7	101.9	106.4	106.8	128.7	120.1	117.9	116.7
April	114.5	103.7	106.9	107.1	129.4	121.3	119.1	117.1
May	115.1	104.3	107.0	107.3	129.8	121.8	119.5	118.3
June	115.4	104.2	107.2	107.6	130.6	122.2	120.6	118.9
July	115.7	104.0	106.9	108.8	130.7	122.2	120.5	119.7
August	115.9	103.9	107.3	109.2	130.3	122.7	120.6	119.8
September	116.2	104.8	107.8	108.4	131.4	123.7	121.9	120.0
October	116.8	105.8P	108.2	108.5	131.6	124.7	122.4	120.2
	Rates of increase over one month (IRL 3 months)				(T/T-1)			
1988								
Oct./Sep.	0.3	0.5	0.2	-0.3	0.1	0.8	0.1	0.5
Nov./Oct.	0.1	-0.4	0.4	-0.1	0.0	0.2	0.2	0.3
Dec./Nov.	0.2	0.3	0.1	0.0	0.0	0.2	0.9	0.0
1989								
Jan/Dec	0.5	-0.2	0.6	0.7	0.7	1.2	0.5	0.5
Feb./Jan.	0.4	-0.3	0.5	0.5	0.4	0.5	0.5	0.7
March/Feb.	0.6	0.5	0.3	0.1	0.9	0.4	1.1	0.5
April/March	0.7	1.8	0.5	0.3	0.5	1.0	1.0	0.3
May/April	0.6	0.6	0.1	0.2	0.3	0.4	0.4	1.0
June/May	0.2	-0.1	0.2	0.3	0.6	0.3	0.9	0.5
July/June	0.2	-0.2	-0.3	1.1	0.1	0.0	-0.1	0.7
August/July	0.2	-0.1	0.3	0.4	-0.3	0.4	0.1	0.1
Sept./August	0.3	0.9	0.4	-0.7	0.9	0.8	1.1	0.1
Oct./Sep.	0.5	1.0P	0.4	0.0	0.1	0.8	0.4	0.3
	Rates of increase over 12 months				(T/T-12)			
1988/87								
October	4.2	1.1	1.8	1.8	6.4	5.9	5.5	4.2
November	4.2	1.2	1.9	2.0	6.2	5.7	5.6	4.1
December	4.4	1.0	2.0	1.9	5.6	6.0	6.6	4.0
1989/88								
January	4.7	1.1	2.3	2.2	5.2	6.6	5.8	4.3
February	4.8	1.0	2.3	2.3	4.9	6.4	6.0	4.6
March	5.0	1.1	2.4	2.2	4.3	6.3	6.6	4.6
April	5.1	2.4	2.7	2.4	4.6	6.4	6.9	4.6
May	5.4	2.9	2.9	2.8	4.7	6.5	6.4	5.0
June	5.2	3.0	3.0	2.5	4.7	6.6	6.8	5.4
July	5.0	3.0	2.9	2.5	4.8	6.1	6.7	5.4
August	4.7	2.6	3.0	2.6	4.6	6.3	6.6	5.2
September	4.3	2.6	3.4	2.4	4.2	6.4	6.7	5.2
October	4.5	3.1P	3.6	2.8	4.2	6.4	7.1	5.1

VERBRAUCHERPREISE

GESAMTINDEX

VEARENDRUNG % T/T-12

CONSUMER PRICES

GENERAL INDEX

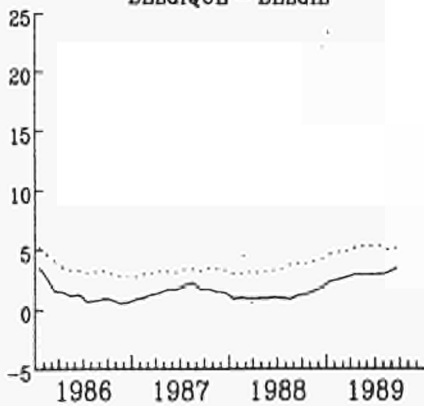
VARIATION % T/T-12

PRIX A LA CONSOMMATION

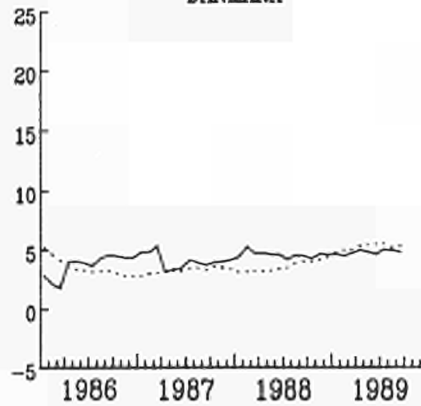
INDICE GENERAL

VARIATION % T/T-12

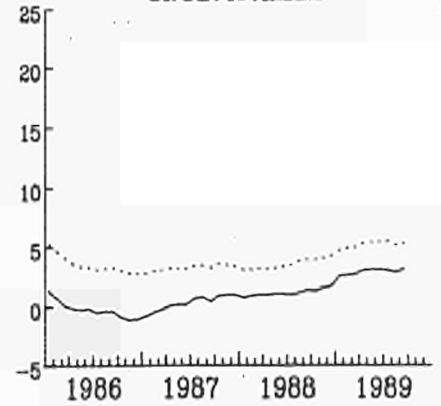
BELGIQUE - BELGIE



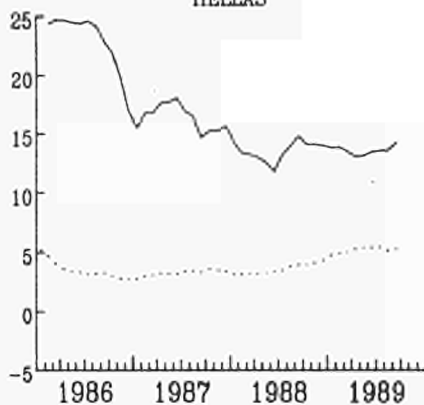
DANMARK



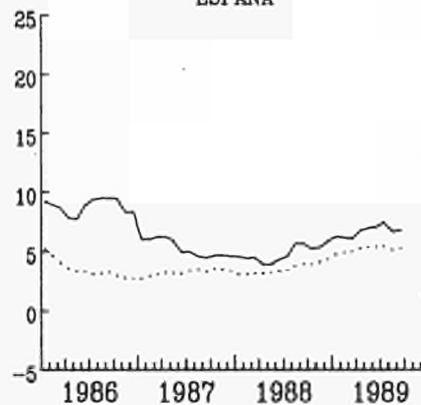
BR DEUTSCHLAND



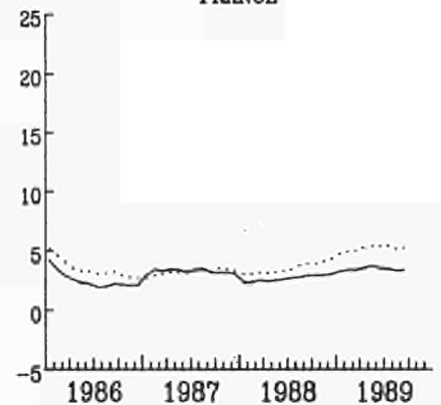
HELLAS



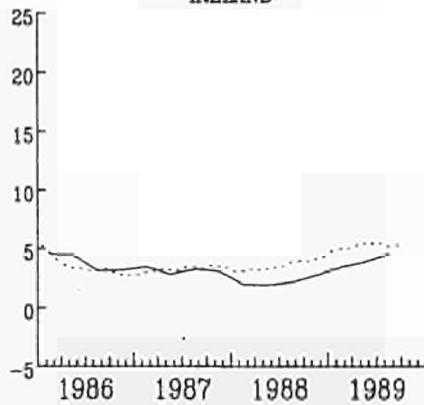
ESPANA



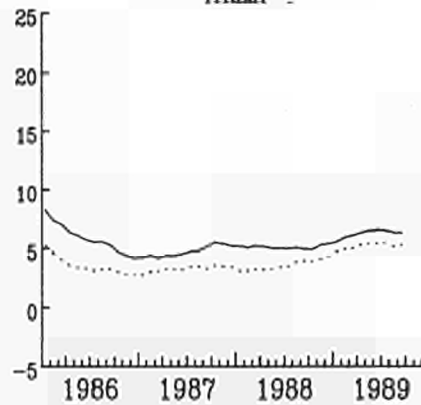
FRANCE



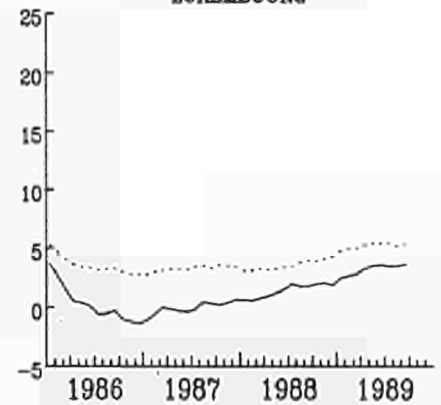
IRELAND



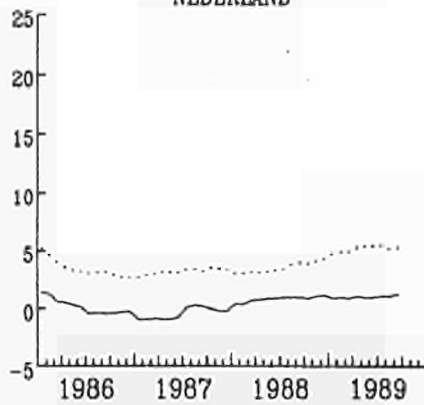
ITALIA



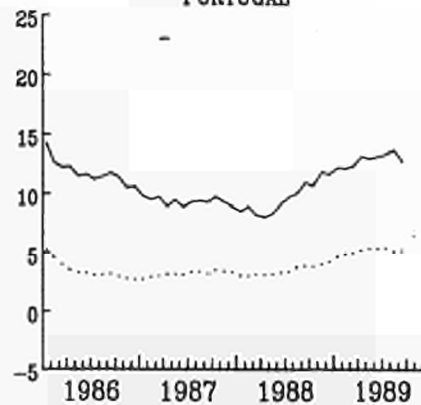
LUXEMBOURG



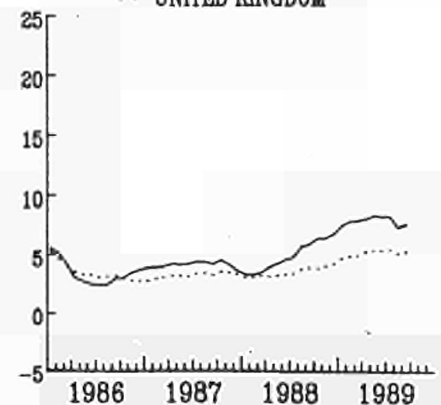
NEDERLAND



PORTUGAL



UNITED KINGDOM



EXPLANATORY NOTES

METHODOLOGY

The consumer price indices given here are the national indices which have different names in each country. As far as trends are concerned, the general index published by EUROSTAT always corresponds to the general index published by the country. The component items of this general index are groups of national indices aggregated according to a harmonized classification conforming to the ESA (European System of Integrated Economic Accounts). For these groups, the price trends correspond to the trends noted by the national indices for the same classification field. The field covered by the general index varies according to country: as regards the population concerned (specific income bracket, certain socio-professional categories or total households), the geographical areas used (capital, urban areas, country as a whole, etc.) or differences in treatments of expenditure on rent, health care, etc... Finally, there is no uniform method for seasonal adjustments. A fixed base system is used in some countries, whereas in others a chain system is used (variable weightings). The reference years used at national level for the indices vary according to country. For ease of comparison, EUROSTAT has chosen 1985 as the common year for the presentation of these indices.

THE CALCULATION OF THE EUR-12 INDEX

The Eur-12 index as calculated by EUROSTAT is a weighted average of national price indices. The weight used is the proportion of each country in the final consumption of households for EUR-12. The values of this consumption in national currency are converted into purchasing power standard (PPS); for this purpose the purchasing power parities of the G.D.P. are used. Up to 1987 purchasing power parities are those which result from the 1980 enquiry, from 1988 onwards they are those from the 1985 enquiry. The index calculated is a chain index of the "Laspeyres" type with weights changing each year. However, the weights are lagged by three years since the national accounts data needed become available only after three years. For example: the weights used for 1989 are those of 1986, for 1988 those of 1985. Moreover, national accounts data are often revised leading to revisions of the consumption weights. In order to avoid continuous modifications in the EUR-12 index for previous periods, EUROSTAT has decided to "freeze" the weights which are used. Thus the EUR-12 index will not be affected by revisions of the national accounts. However when Member States carry out major revisions in the price series for past years, EUR-12 data will be calculated using these new series.

TABLE III

CONSUMER PRICES

GENERAL INDEX EXCLUDING TOBACCO PRODUCTS

	EUR 12	B	DK	D	GR	E	F	IRL	I	L	NL	P	UK	
	General index excluding tobacco products							1985=100						
Annual average														
1985	100.0	100.0	100.0	100.0	100.0	100.0	100.0	100.0	100.0	100.0	100.0	100.0	100.0	
1986	103.5	101.2	103.5	99.7	123.2	109.8	102.4	103.5	105.8	100.1	100.3	111.7	103.2	
1987	107.0	102.7	107.8	100.0	143.4	115.5	105.7	106.7	110.7	100.0	100.1	122.1	107.5	
1988	110.8	103.9	112.7	101.2	161.9	121.1	108.4	109.0	116.2	101.4	101.0	133.9	112.8	
1988														
September	111.8	104.5	113.7	101.3	166.1	123.5	109.2	:	117.2	101.8	101.6	136.6	114.5	
October	112.3	104.6	113.9	101.4	170.4	123.7	109.5	:	118.1	102.0	101.7	137.9	115.6	
November	112.6	104.5	114.8	101.6	171.6	123.6	109.6	110.3P	118.6	102.4	101.8	140.0	116.2	
December	113.0	104.9	114.8	101.8	173.5	124.6	109.8	:	119.1	102.3	101.7	141.7	116.5	
1989														
January	113.7	105.3	115.3	102.8	172.8	125.8	110.3	:	119.9	103.0	100.8	143.6	117.2	
February	114.1	105.7	116.1	103.1	171.8	126.1	110.6	111.3	120.8	103.3	101.1	145.5	118.1	
March	114.6	105.9	116.8	103.3	176.6	126.9	110.9	:	121.4	103.7	101.5	146.9	118.6	
April	115.6	106.7	117.6	104.0	179.5	127.3	111.6	:	122.3	104.0	101.1	148.4	120.8	
May	116.0	106.8	118.4	104.1	180.1	127.5	112.1	112.6	122.9	104.4	101.1	148.7	121.6	
June	116.4	107.0	118.1	104.4	183.0	128.1	112.2	:	123.4	104.7	101.0	149.4	122.1	
July	116.7	107.3	118.1	104.2	182.7	130.3	112.5	:	123.7	105.0	101.3	150.9	122.2	
August	116.9P	107.7	118.8	104.1	183.3	130.5	112.7	114.4	124.0	105.2	101.6	153.6	122.5	
September	117.6P	108.2	119.3	104.3	190.1	132.8	113.0	:	124.6P	105.5	102.2	153.9	123.3	
	Rates of increase over one month (IRL 3 months)							(T/T-1)						
1988														
Sept./August	0.5	0.1	0.6	0.1	3.1	1.0	0.2	:	0.5	0.1	0.3	1.1	0.5	
Oct./Sept.	0.5	0.0	0.2	0.1	2.5	0.1	0.2	:	0.8	0.2	0.1	0.9	1.0	
Nov./Oct.	0.3	-0.1	0.7	0.2	0.7	-0.1	0.1	0.9P	0.4	0.3	0.1	1.5	0.5	
Dec./Nov.	0.3	0.4	0.0	0.2	1.2	0.8	0.2	:	0.4	-0.1	-0.1	1.2	0.3	
1989														
Jan/Dec	0.6	0.4	0.5	1.0	-0.4	1.0	0.4	:	0.7	0.7	-0.9	1.3	0.6	
Feb./Jan.	0.5	0.4	0.7	0.3	-0.6	0.2	0.3	1.3	0.8	0.3	0.3	1.4	0.8	
March/Feb.	0.4	0.2	0.6	0.2	2.8	0.6	0.3	:	0.5	0.3	0.5	0.9	0.4	
April/March	0.8	0.7	0.7	0.6	1.7	0.3	0.6	:	0.5	0.3	0.6	1.1	1.9	
May/April	0.4	0.1	0.7	0.2	0.3	0.1	0.4	1.1	0.5	0.4	0.0	0.2	0.7	
June/May	0.3	0.2	-0.3	0.2	1.6	0.5	0.1	:	0.4	0.3	-0.1	0.5	0.4	
July/June	0.3	0.3	0.0	-0.2	-0.2	1.7	0.3	:	0.2	0.3	0.2	1.0	0.1	
August/July	0.2P	0.3	0.6	-0.1	0.3	0.2	0.1	1.6	0.2	0.1	0.3	1.8	0.2	
Sept./August	0.6P	0.5	0.4	0.2	3.7	1.7	0.3	:	0.5P	0.3	0.6	0.2	0.7	
	Rates of increase over 12 months							(T/T-12)						
1988/87														
September	3.9	1.2	4.5	1.4	14.2	5.7	2.8	:	4.7	1.7	1.1	11.0	5.9	
October	4.0	1.4	4.2	1.4	13.4	5.3	2.8	:	5.0	1.9	0.7	10.8	6.5	
November	4.1	1.6	4.7	1.6	13.5	5.4	2.8	2.9P	5.0	2.0	0.8	12.0	6.5	
December	4.3	1.9	4.6	1.7	13.3	5.9	2.9	:	5.3	1.8	1.0	11.8	6.9	
1989/88														
January	4.7	2.4	4.7	2.4	13.5	6.3	3.1	:	5.5	2.4	0.9	12.4	7.6	
February	4.9	2.5	4.6	2.5	13.7	6.2	3.3	3.4	5.7	2.6	1.1	12.3	8.0	
March	5.0	2.7	4.8	2.5	13.3	6.1	3.3	:	5.8	2.7	0.9	12.5	7.9	
April	5.3	3.0	5.1	3.0	12.8	6.8	3.5	:	6.3	3.1	1.2	13.4	8.2	
May	5.5	3.0	4.9	2.9	12.9	7.1	3.7	3.9	6.4	3.5	1.1	13.2	8.6	
June	5.5	3.0	4.7	3.0	13.3	7.2	3.6	:	6.5	3.6	1.1	13.1	8.6	
July	5.5	3.0	5.2	2.9	13.5	7.6	3.6	:	6.5	3.4	1.2	13.3	8.5	
August	5.2P	3.1	5.0	2.9	13.7	6.7	3.4	4.6	6.3	3.4	1.2	13.7	7.6	
September	5.3P	3.5	4.9	2.9	14.4	7.5	3.4	:	6.3P	3.6	1.4	12.7	7.7	

TABLE IV

	CONSUMER PRICES							TOBACCO PRODUCTS					
	EUR 12	B	DK	D	GR	E	F	IRL	I	L	NL	P	UK
	Tobacco products							1985=100					
Annual average													
1985	100.0	100.0	100.0	100.0	100.0	100.0	100.0	100.0	100.0	100.0	100.0	100.0	100.0
1986	108.6	108.0	107.3	103.2	118.6	112.0	106.5	110.0	105.9	107.8	101.3	118.5	114.3
1987	114.2	113.3	109.6	103.1	137.6	120.6	111.9	116.4	116.7	110.0	104.3	133.6	117.8
1988	121.3	114.3	112.3	104.3	198.1	124.2	122.4	119.9	125.8	115.1	104.4	146.4	121.7
1988													
September	118.4	114.3	112.3	103.8	209.9	124.5	126.6	:	124.1	116.1	104.3	144.8	117.5
October	118.5	114.3	112.3	103.8	209.9	124.5	126.6	:	124.1	116.1	104.3	144.8	118.0
November	121.5	114.4	112.3	109.0	209.9	124.5	126.6	119.9	134.1	116.1	104.8	144.8	119.0
December	121.5	114.5	112.3	109.0	209.9	124.5	126.6	:	134.1	120.1	104.8	144.8	119.2
1989													
January	122.1	115.0	112.3	109.0	218.2	127.8	126.6	:	134.1	120.1	104.9	144.8	119.6
February	122.5	118.7	112.3	109.0	230.0	127.8	126.6	123.1	134.1	120.1	104.9	144.8	119.7
March	122.6	119.9	112.3	109.0	230.0	127.8	126.6	:	134.1	120.1	104.9	144.8	119.8
April	122.9	120.2	112.3	109.0	230.0	127.8	126.6	:	134.1	120.1	104.9	167.4	119.8
May	122.9	120.4	112.3	109.0	230.0	127.8	126.6	123.1	134.1	120.1	104.9	167.4	119.8
June	123.0	120.5	112.3	109.3	230.0	127.8	126.6	:	134.1	120.1	104.9	167.4	119.9
July	123.2	120.6	112.3	109.6	230.0	127.8	127.6	:	134.1	120.1	104.9	167.4	119.8
August	123.4P	120.2	113.0	109.8	230.0	127.8	128.7	123.2	134.1	120.1	104.9	167.4	119.7
September	123.7P	122.9	113.0	110.0	230.0	127.8	128.7	:	134.1	120.1	104.9	167.4	120.5
	Rates of increase over one month (IRL 3 months)							(T/T-1)					
1988													
Sept./August	0.0	0.0	0.0	0.0	0.0	0.0	0.0	:	0.0	0.0	0.0	0.0	0.2
Oct./Sept.	0.1	0.0	0.0	0.0	0.0	0.0	0.0	:	0.0	0.0	0.0	0.0	0.4
Nov./Oct.	2.5	0.1	0.0	5.0	0.0	0.0	0.0	0.0	8.1	0.0	0.5	0.0	0.8
Dec./Nov.	0.0	0.1	0.0	0.0	0.0	0.0	0.0	:	0.0	3.5	0.0	0.0	0.2
1989													
Jan/Dec	0.4	0.4	0.0	0.0	4.0	2.7	0.0	:	0.0	0.0	0.1	0.0	0.3
Feb./Jan.	0.4	3.3	0.0	0.0	5.4	0.0	0.0	2.6	0.0	0.0	0.0	0.0	0.1
March/Feb.	0.1	1.0	0.0	0.0	0.0	0.0	0.0	:	0.0	0.0	0.0	0.0	0.1
April/March	0.2	0.3	0.0	0.0	0.0	0.0	0.0	:	0.0	0.0	0.0	15.6	0.0
May/April	0.0	0.2	0.0	0.0	0.0	0.0	0.0	0.0	0.0	0.0	0.0	0.0	0.0
June/May	0.1	0.1	0.0	0.4	0.0	0.0	0.0	:	0.0	0.0	0.0	0.0	0.1
July/June	0.1	0.1	0.0	0.2	0.0	0.0	0.8	:	0.0	0.0	0.0	0.0	-0.1
August/July	0.1P	-0.3	0.6	0.2	0.0	0.0	0.8	0.1	0.0	0.0	0.0	0.0	-0.1
Sept./August	0.3P	2.2	0.0	0.2	0.0	0.0	0.0	:	0.0	0.0	0.0	0.0	0.7
	Rates of increase over 12 months							(T/T-12)					
1988/87													
September	6.1	0.3	2.6	0.9	49.7	3.2	11.2	:	8.7	5.8	0.0	9.3	4.1
October	4.5	0.2	2.6	0.9	49.7	3.2	11.2	:	0.0	5.8	0.0	-1.1	3.7
November	6.9	0.2	1.9	5.9	49.7	3.2	11.2	2.3	8.1	5.8	0.5	-1.1	3.9
December	6.9	0.3	1.9	5.9	49.7	3.2	11.2	:	8.1	7.2	0.5	-1.1	4.0
1989/88													
January	6.5	0.7	0.0	5.9	26.6	5.9	11.2	:	8.1	7.2	0.6	0.0	4.1
February	6.2	4.0	0.0	5.9	20.2	2.7	11.2	2.7	8.1	7.2	0.6	0.0	4.1
March	6.3	4.9	0.0	5.9	20.2	2.7	11.2	:	8.1	7.2	0.6	0.0	4.2
April	5.6	5.2	0.0	5.9	20.2	2.7	6.9	:	8.1	7.2	0.6	15.6	2.6
May	4.5	5.4	0.0	5.0	20.2	2.7	1.8	2.7	8.1	3.5	0.6	15.6	2.0
June	4.6	5.5	0.0	5.4	20.2	2.7	1.8	:	8.1	3.5	0.6	15.6	2.2
July	4.4	5.6	0.0	5.6	15.6	2.7	0.8	:	8.1	3.5	0.6	15.6	2.3
August	4.2P	5.2	0.6	5.8	9.6	2.7	1.6	2.8	8.1	3.5	0.6	15.6	2.0
September	4.5P	7.5	0.6	6.0	9.6	2.7	1.6	:	8.1	3.5	0.6	15.6	2.6

Sources

DEUTSCHLAND	Preise und Preisindizes für die Lebenshaltung STATISTISCHES BUNDESAMT - WIESBADEN/DEUTSCHLAND
FRANCE	Indices des prix à la consommation Bulletin mensuel de statistiques INSEE - PARIS/FRANCE
ITALIA	Indici dei prezzi al consumo ISTAT - ROMA/ITALIA
NEDERLAND	Maandstatistiek van de prijzen C.B.S. - VOORBURG/NEDERLAND
BELGIQUE	Index van de consumptie prijzen Dienst voor het indexcijfer MINISTERIE VAN ECONOMISCHE ZAKEN - BRUSSEL/BELGIE
LUXEMBOURG	Indice des prix à la consommation INDICATEURS RAPIDES STATEC - LUXEMBOURG
UNITED KINGDOM	Retail price index DEPARTEMENT OF EMPLOYMENT - LONDON - UK
IRELAND	Consumer Price Index CENTRAL STATISTICAL OFFICE - DUBLIN/IRELAND
DANMARK	Forbrugerprisindexet Prisstistik DANMARKS STATISTIK - KOBENHAVN/DANMARK
ESPANA	Indice de precios de consumo INSTITUTO NACIONAL DE ESTADISTICA - MADRID - ESPAÑA
PORTUGAL	Indice de precios no consumidor INSTITUTO NACIONAL DE ESTADISTICA - LISBOA - PORTUGAL
GREECE	Consumer price index NATIONAL STATISTICAL OFFICE OF GREECE - ATHENS - GREECE
SCHWEIZ	Landesindex der Konsumentenpreise BUNDESAMT FUER GEWERBE,INDUSTRIE UND ARBEIT - BERN - SCHWEIZ
OESTERREICH	Index der Verbraucherpreise OESTERREICHISCHES STATISTISCHES ZENTRALAMT -WIEN OESTERREICH
NORWAY	Konsumprisindeksen STATISTIK MANEDSHEFTE STATISTIK SENTRALBYRA - OSLO - NORGE
SWEDEN	Konsumpriserna: STATISTISKA MEDELLAN STATISTISKA CENTRALBYRAN - STOCKHOLM/SVERIGE
FINLAND	Consumer price index - MONTHLY BULLETIN CENTRAL STATISTICAL OFFICE OF FINLAND - HELSINKI/FINLAND
U.S.A.	Consumer price index - CPI-U U.S. City - Average for all urban consumers U.S. BUREAU OF LABOR - WASHINGTON - U.S.A.
CANADA	The consumer price index STATISTICS CANADA - OTTAWA/CANADA
JAPAN	Consumer price index STATISTICS BUREAU MANAGEMENT AND COORDINATION AGENCY - TOKYO/JAPAN

**Venta y suscripciones · Salg og abonnement · Verkauf und Abonnement · Πωλήσεις και συνδρομές
Sales and subscriptions · Vente et abonnements · Vendita e abbonamenti
Verkoop en abonnementen · Venda e assinaturas**

BELGIQUE / BELGIË

Moniteur belge / Belgisch Staatsblad

42, Rue de Louvain / Leuvenseweg 42
1000 Bruxelles / 1000 Brussel
Tél. 512 00 26
Télécopieur: 511 01 84
CCP / Postrekening 000-2005502-27

Sous-dépôts / Agentschappen:

Librairie européenne / Europese Boekhandel

Avenue Albert Jonnart 50 / Albert Jonnartlaan 50
1200 Bruxelles / 1200 Brussel
Tél. 734 02 81
Télécopieur: 735 08 60

Jean De Lannoy

Avenue du Roi 202 / Koningslaan 202
1060 Bruxelles / 1060 Brussel
Tél. (02) 538 5169
Télex 63220 UNBOOK B

CREDOC

Rue de la Montagne 34 / Bergstraat 34
Bte 11 / Bus 11
1000 Bruxelles / 1000 Brussel

DANMARK

J. H. Schultz Information A/S

EF-Publikationer

Ottiliavej 18
2500 Valby
Tlf: 36 44 22 66
Telefax: 36 44 01 41
Girokonto 6 00 08 86

BR DEUTSCHLAND

Bundesanzeiger Verlag

Breite Straße
Postfach 10 80 06
5000 Köln 1
Tel. (02 21) 20 29-0
Fernschreiber:
ANZEIGER BONN 8 882 595
Telefax: 20 29 278

GREECE

G.C. Eleftheroudakis SA

International Bookstore
4 Nikis Street
105 63 Athens
Tel.: 3226-323
Telex: 219410 ELEF
Telefax: 3254 889

Sub-agent for Northern Greece:

Molho's Bookstore

The Business Bookshop
10 Tsimiski Street
Thessaloniki
Tel. 275 271
Telex 412885 LIMO

ESPAÑA

Boletín Oficial del Estado

Trafalgar 27
E-28010 Madrid
Tel. (91) 446 60 00

Mundi-Prensa Libros, S.A.

Castelló 37
E-28001 Madrid
Tel. (91) 431 33 99 (Libros)
431 32 22 (Suscripciones)
435 36 37 (Dirección)
Telex 49370-MPLI-E
Telefax: (91) 275 39 98

FRANCE

**Journal officiel
Service des publications
des Communautés européennes**

26, rue Desaix
75727 Paris Cedex 15
Tél. (1) 40 58 75 00
Télécopieur: (1) 4058 7574

IRELAND

Government Publications Sales Office

Sun Alliance House
Molesworth Street
Dublin 2
Tel. 71 03 09

or by post

Government Stationery Office

EEC Section

6th floor
Bishop Street
Dublin 8
Tel. 78 16 66

ITALIA

Licosa Spa

Via Benedetto Fortini, 120/10
Casella postale 552
50 125 Firenze
Tel. 64 54 15
Telefax: 64 12 57
Telex 570466 LICOSA I
CCP 343 509

Subagenti:

Libreria scientifica Lucio de Bissio - AEIOU

Via Meravigli, 16
20 123 Milano
Tel. 80 76 79

Herder Editrice e Libreria

Piazza Montecitorio, 117-120
00 186 Roma
Tel. 67 94 628/67 95 304

Libreria giuridica

Via 12 Ottobre, 172/R
16 121 Genova
Tel. 59 56 93

GRAND-DUCHÉ DE LUXEMBOURG

Abonnements seulement
Subscriptions only
Nur für Abonnements

Messageries Paul Kraus

11, rue Christophe Plantin
L-2339 Luxembourg
Tél. 48 21 31
Télex 2515
CCP 49242-63

NEDERLAND

SDU uitgeverij

Christoffel Plantijnstraat 2
Postbus 20014
2500 EA 's-Gravenhage
Tel. (070) 78 98 80 (bestellingen)
Telefax: (070) 476351

PORTUGAL

Imprensa Nacional

Casa da Moeda, E.P.
Rua D. Francisco Manuel de Melo, 5
1092 Lisboa Codex
Tel. 69 34 14

Distribuidora Livros Bertrand Lda.

Grupo Bertrand, SARL
Rua das Terras dos Vales, 4-A
Apart. 37
2700 Amadora Codex
Tel. 493 90 50 - 494 87 88
Telex 15798 BERDIS

UNITED KINGDOM

HMSO Books (PC 16)

HMSO Publications Centre
51 Nine Elms Lane
London SW8 5DR
Tel. (01) 873 9090
Fax: GP3 873 8463

Sub-agent:

Alan Armstrong Ltd

2 Arkwright Road
Reading, Berks RG2 0SQ
Tel. (0734) 75 17 71
Telex 849937 AAALTD G
Fax: (0734) 755164

SUISSE

OSEC

Stampfenbachstraße 85
CH-8035 Zürich
Tél. (01) 365 51 51
Fax: (01) 365 52 21

ÖSTERREICH

Manz'sche Verlagsbuchhandlung

Kohlmarkt 16
1014 Wien
Tel. (0222) 531 61-0
Telex 11 25 00 BOX A
Telefax: (0222) 531 61-81

TÜRKIYE

Dünya süper veb ofset A.Ş.

Narlıbahçe Sokak No. 15
Cağaloğlu
İstanbul
Tel. 512 01 90
Telex: 23822 dsvo-tr.

UNITED STATES OF AMERICA

UNIPUB

4661-F Assembly Drive
Lanham, MD 20706-4391
toll free (800) 274-4888
Fax. (301) 459-0056
Télex 7108260418

CANADA

Renouf Publishing Co., Ltd

61 Sparks Street
Ottawa
Ontario K1P 5R1
Tel. Toll Free 1 (800) 267 4164
Ottawa Region (613) 238 8985-6
Telex 053-4936

JAPAN

Kinokuniya Company Ltd

17-7 Shinjuku 3-Chome
Shinjuku-ku
Tokyo 160-91
Tel. (03) 354 0131

Journal Department

PO Box 55 Chitose
Tokyo 156
Tel. (03) 439 0124

AUTRES PAYS

**OTHER COUNTRIES
ANDERE LÄNDER**

**Office des publications officielles
des Communautés européennes**

2, rue Mercier
L-2985 Luxembourg
Tél. 49 92 81
Télex PUBOF LU 1324 b
CC bancaire BIL 8-109/6003/700

Price (excl. VAT) in Luxembourg: Single copy ECU 4.40 • Subscription ECU 46.50



OFICINA DE PUBLICACIONES OFICIALES DE LAS COMUNIDADES EUROPEAS
KONTORET FOR DE EUROPÆISKE FÆLLESSKABERS OFFICIELLE PUBLIKATIONER
AMT FÜR AMTLICHE VERÖFFENTLICHUNGEN DER EUROPÄISCHEN GEMEINSCHAFTEN
ΥΠΗΡΕΣΙΑ ΕΠΙΣΗΜΩΝ ΕΚΔΟΣΕΩΝ ΤΩΝ ΕΥΡΩΠΑΙΚΩΝ ΚΟΙΝΟΤΗΤΩΝ
OFFICE FOR OFFICIAL PUBLICATIONS OF THE EUROPEAN COMMUNITIES
OFFICE DES PUBLICATIONS OFFICIELLES DES COMMUNAUTÉS EUROPÉENNES
UFFICIO DELLE PUBBLICAZIONI UFFICIALI DELLE COMUNITÀ EUROPEE
BUREAU VOOR OFFICIËLE PUBLIKATIES DER EUROPESE GEMEENSCHAPPEN
SERVIÇO DAS PUBLICAÇÕES OFICIAIS DAS COMUNIDADES EUROPEIAS

ISSN 1010-2779

L - 2985 Luxembourg

Catalogue number: CA-CB-89-011-EN-C