

Consumer price index

Indice des prix à la consommation

6 1986 Monthly Mensuel

PRICES : Another moderate increase in June

The consumer price index for the Community as a whole (EUR 12) rose by 0.2% between May and June 1986 which was the same that observed in the previous months. It confirms the stabilization of the rate of increases of consumer price indices in most of the EC countries. The change of the CPI is mainly dominated by the prices for oil products. Since the beginning of the year their fall neutralizes the rise of prices in other sectors.

Changes between May and June were between -0.4% and +0.4% in most of the countries, except Greece where prices rose sharply by 1.7% in a month.

During the first six months of this year prices moved as follows (June 86 compared to Dec. 85):

Luxembourg	-1.3%	Italy	2.7%
Germany	-0.2%	Ireland	2.8% *
Netherlands	-0.2%	Denmark	3.2% (E)
Belgium	+0.3%	Spain	4.5% (E)
France	+1.0%	Portugal	5.6%
United Kingdom	+1.8%	Greece	8.8%

* May 86/Nov. 85

For the Community as a whole prices went up by 1.7% between December 1985 and June 1986, while the price indices in the United States and Japan remained nearly unchanged during this period.

Over the year the CPI for EUR 12 rose by 3.4% against 1.6%** in the United States and 1.1%** in Japan.

Among the EC countries the best results were recorded in Germany (FR) -0.2%, Luxembourg +0.1% and the Netherlands +0.2%, whereas at the other end of the scale we find Greece with +24.4% and Portugal with 11.7%.

** (May '86/May '85)

Note to readers:

This bulletin contains an updating for May 1986 of the purchasing power parities for consumption and the price level indices for the 12 EC countries as well as for Austria, the USA, Canada and Japan.



DE EUROPÆISKE FÆLLESSKABERS STATISTISKE KONTOR
STATISTISCHES AMT DER EUROPÄISCHEN GEMEINSCHAFTEN
ΣΤΑΤΙΣΤΙΚΗ ΥΠΗΡΕΣΙΑ ΤΩΝ ΕΥΡΩΠΑΪΚΩΝ ΚΟΙΝΟΤΗΤΩΝ
STATISTICAL OFFICE OF THE EUROPEAN COMMUNITIES
OFICINA ESTADÍSTICA DE LAS COMUNIDADES EUROPEAS
OFFICE STATISTIQUE DES COMMUNAUTÉS EUROPÉENNES
ISTITUTO STATISTICO DELLE COMUNITÀ EUROPEE
BUREAU VOOR DE STATISTIEK DER EUROPESE GEMEENSCHAPPEN
SERVIÇO DE ESTATÍSTICA DAS COMUNIDADES EUROPEIAS

L-2920 Luxembourg — Tél. 43011 — Télex : Comeur Lu 3423
B-1049 Bruxelles, Bâtiment Berlaymont, Rue de la Loi 200 (Bureau de liaison) — Tél. 235 11 11

The information included in this bulletin has been taken from the Cronos data bank, which is accessible via the different host companies. For all information about these host companies contact Eurostat in Luxembourg, tel. 4301-3220. To obtain specifications of the principal characteristics of the series contained in this bulletin contact Luxembourg, tel.

4301-3202 or 4301-3511

Les informations reprises dans ce bulletin sont extraites de la banque de données Cronos, qui est accessible via différents serveurs. Pour toute information concernant ces serveurs s'adresser à l'Eurostat, Luxembourg, tél. 4301-3220. Pour obtenir des précisions sur les caractéristiques principales des séries contenues dans ce bulletin s'adresser à Luxembourg, tél. **4301-3202 ou 4301-3511**

Luxembourg : Office des publications officielles des Communautés européennes, 1986

Reproduction is authorized, except by commercial data-base networks, subject to acknowledgement of the source. For conditions relating to reproduction by data-base services, application should be made to Eurostat, L-2920 Luxembourg.

La reproduction, autorisée sauf sur réseau informatique commercial, est subordonnée à l'indication de la source. Toute demande concernant les conditions de reproduction sur réseau informatique devra être envoyée à l'Eurostat, L-2920 Luxembourg.

VERBRAUCHERPREISE
GESAMTINDEX

CONSUMER PRICES
GENERAL INDEX

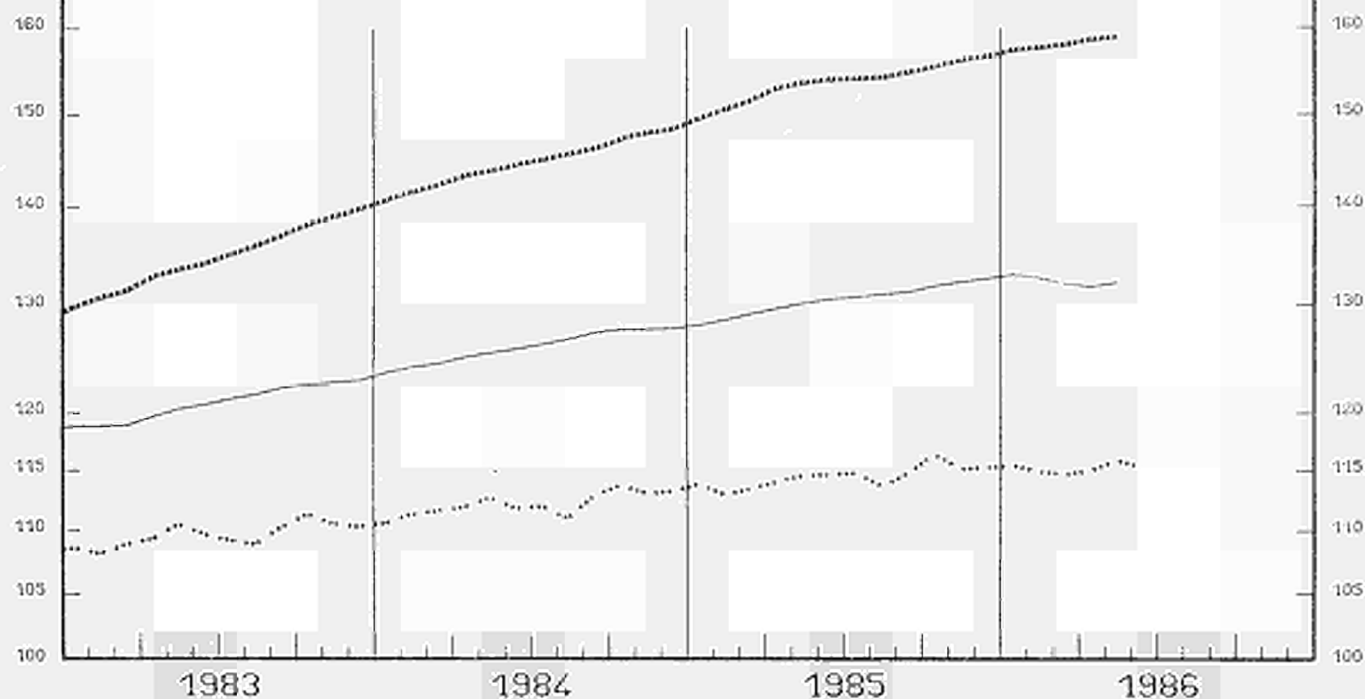
PRIX A LA CONSOMMATION
INDICE GENERAL

— USA

..... EUR 12

..... JAPAN

1980 = 100



EINFACH-LOGARITHMISCHE SKALA

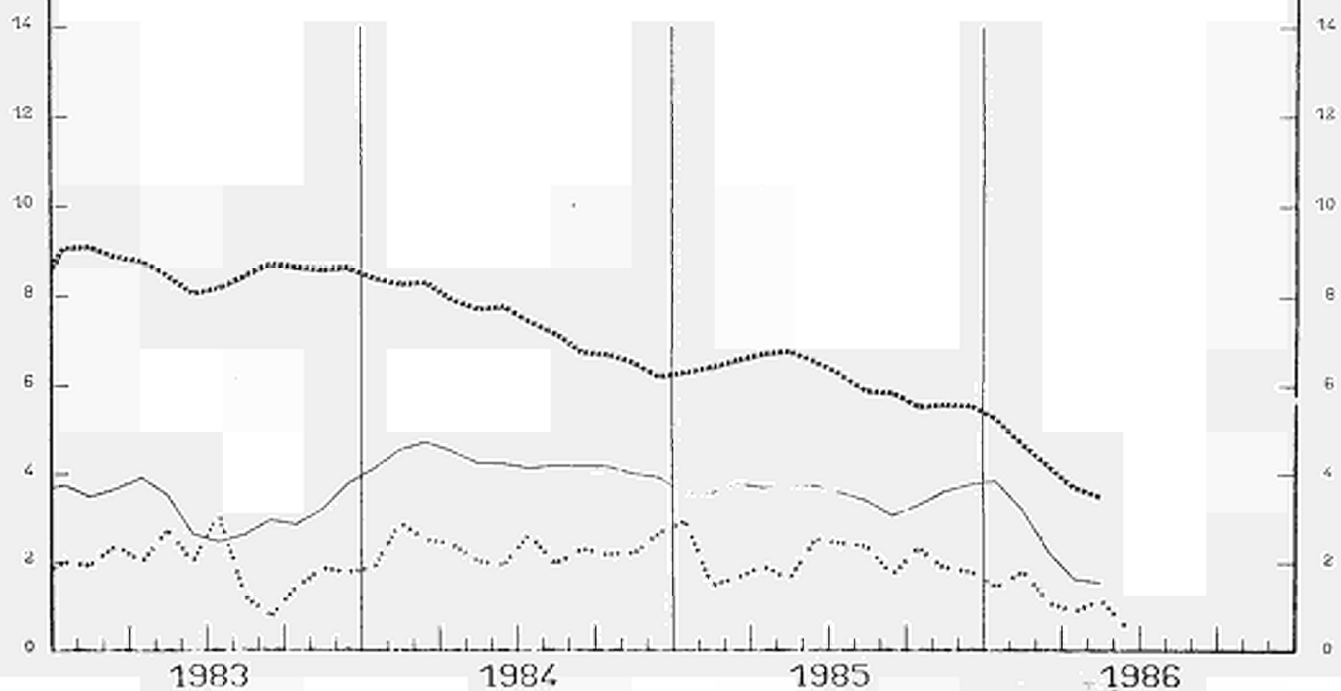
SERI-LOGARITHMIC SCALE

ECHELLE SERI-LOGARITHMIQUE

VERÄNDERUNG * T/T-12

VARIATION * T/T-12

VARIATION * T/T-12



CONSUMER PRICES

A

PRIX A LA CONSOMMATION

GENERAL INDEX

INDICE GENERAL

	EUR 10	BR DEUTSCH LAND	FRANCE	ITALIA	NEDER= LAND	BELGIQUE BELGIE	LUXEM= BOURG	UNITED KINGDOM	IRELAND	DANMARK	ELLAS	ESPAÑA	PORTUGAL	EUR 12	USA	JAPAN
	PRICE INDICES								1980 = 100							
									INDICES DE PRIX							
1981 O	111.7	106.3	113.4	117.8	106.7	107.6	108.1	111.9	120.4	111.7	124.5	114.6	120.0	112.1	110.3	104.9
1982 O	123.0	111.9	126.8	137.2	112.8	117.0	118.2	121.5	141.1	123.0	150.5	131.1	147.3	124.2	117.1	107.7
1983 O	132.7	115.6	139.0	157.3	115.9	126.0	128.4	127.1	155.8	131.5	181.4	147.0	184.3	134.8	120.9	109.7
1984 O	141.2	118.4	149.3	174.3	119.6	134.0	135.7	133.4	169.2	139.8	214.6	163.6	237.5	144.8	126.1	112.1
1985 O	149.1	121.0	158.0	190.3	122.3	140.5	141.3	141.5	178.4	146.4	256.3	178.0	284.1	153.7	130.5	114.4
1985 J	149.5	121.3	158.3	190.4	122.5	140.5	142.4	142.7	:	147.0	252.7	177.0	283.2	154.0	130.6	114.6
1985 J	149.6	121.1	158.9	190.8	122.2	141.3	143.2	142.5	:	146.4	250.9	178.0	284.2	154.1	130.8	114.7
1985 A	149.7	120.7	159.1	191.3	122.2	141.3	142.7	142.9	180.2	146.2	251.6	178.3	286.5	154.2	131.1	113.6
1985 S	150.2	120.9	159.3	192.3	122.8	141.5	142.7	142.8	:	147.0	264.1	180.3	286.7	154.8	131.5	114.7
1985 O	150.8	121.1	159.8	194.3	123.2	141.4	143.9	143.0	:	147.4	272.9	181.0	289.7	155.5	131.9	116.3
1985 N	151.4	121.3	160.1	195.8	123.2	141.8	144.2	143.5	180.5	148.0	279.6	182.5	294.4	156.2	132.3	115.1
1985 D	151.7	121.4	160.3	196.9	122.9	141.8	144.5	143.7	:	147.9	288.8	183.2	299.4	156.6	132.6	115.2
1986 J	152.1	121.6	160.4	197.9	122.4	142.0	144.2	144.0	:	147.5	295.6	188.4	305.1	157.4	133.1	115.4
1986 F	152.2	121.3	160.0	199.3	122.6	142.1	143.6	144.5	183.3	147.4	293.5	189.3	309.2	157.6	132.7	114.9
1986 M	152.4	121.0	160.4	200.1	122.7	141.9	142.9	144.7	:	148.0	302.8	190.1	312.7	158.0	132.1	114.6
1986 A	153.1	120.9	161.0	200.7	123.2	142.4	142.7	146.1	:	151.8	307.3	190.5	316.8	158.6	131.8	115.0
1986 M	153.4	120.9	161.4	201.5	123.2	142.0	142.7	146.4	185.5	152.9	309.0	191.0	315.3	158.9	132.2	115.8
1986 J	153.7P	121.1	161.9	202.3	122.7	142.2	142.6	146.3	:	152.6E	314.3	:	316.3	159.2P	:	115.2E
	RATE OF INCREASE OVER ONE MONTH (IRELAND 3 MONTHS)								(T/T-1) Taux de Croissance sur un Mois (Irlande 3 Mois)							
85 J/M	0.3	0.1	0.4	0.5	-0.1	0.0	0.2	0.2	:	0.0	1.8	-0.2	0.1	0.2	0.3	0.1
85 J/J	0.1	-0.2	0.4	0.2	-0.2	0.5	0.5	-0.2	:	-0.4	-0.7	0.6	0.3	0.1	0.2	0.1
85 A/J	0.0	-0.3	0.1	0.3	0.0	0.0	-0.4	0.3	1.5	-0.1	0.3	0.2	0.8	0.1	0.2	-1.0
85 S/A	0.3	0.2	0.1	0.5	0.5	0.2	0.0	-0.1	:	0.5	5.0	1.1	0.1	0.4	0.3	1.0
85 O/S	0.4	0.2	0.3	1.0	0.3	-0.1	0.8	0.2	:	0.3	3.3	0.4	1.0	0.4	0.3	1.4
85 N/O	0.4	0.2	0.2	0.8	0.0	0.2	0.2	0.3	0.2	0.4	2.5	0.8	1.6	0.4	0.3	-1.0
85 D/N	0.2	0.1	0.1	0.6	-0.2	0.0	0.2	0.1	:	-0.1	3.3	0.4	1.7	0.3	0.2	0.1
86J/85D	0.2	0.2	0.1	0.5	-0.4	0.1	-0.2	0.2	:	-0.3	2.3	2.8	1.9	0.5	0.3	0.2
86 F/J	0.1	-0.2	-0.2	0.7	0.2	0.1	-0.4	0.4	1.6	-0.1	-0.7	0.5	1.3	0.1	-0.3	-0.4
86 M/F	0.2	-0.2	0.3	0.4	0.1	-0.2	-0.5	0.1	:	0.4	3.2	0.4	1.2	0.2	-0.5	-0.3
86 A/M	0.4	-0.1	0.4	0.3	0.4	0.3	-0.1	1.0	:	2.6	1.5	0.3	1.3	0.4	-0.2	0.3
86 M/A	0.2	0.0	0.2	0.4	0.0	-0.2	0.0	0.2	1.2	0.7	0.5	0.3	-0.5	0.2	0.3	0.7
86 J/M	0.2P	0.2	0.3	0.4E	-0.4	0.1	-0.1	-0.1	:	-0.2E	1.7	:	0.3	0.2P	:	-0.5E
	RATE OF INCREASE OVER 12 MONTHS								(T/T-12) Taux de Croissance sur 12 Mois							
85/84 J	5.9	2.3	6.4	9.4	2.5	5.1	4.4	7.0	:	4.9	17.2	9.0	20.1	6.4	3.7	2.5
85/84 J	5.8	2.3	6.1	9.4	2.4	5.1	4.7	6.9	:	4.6	16.7	7.9	17.3	6.2	3.6	2.4
85/84 A	5.5	2.1	5.6	9.1	2.3	4.7	4.0	6.2	5.4	4.1	17.8	7.3	16.0	5.8	3.4	2.3
85/84 S	5.4	2.2	5.3	8.8	2.3	4.6	3.9	5.9	:	3.9	20.1	8.3	15.8	5.8	3.2	1.7
85/84 O	5.1	1.8	4.9	8.9	1.9	4.0	4.0	5.4	:	3.7	21.1	8.1	16.0	5.5	3.2	2.3
85/84 N	5.1	1.8	4.8	8.9	1.8	4.2	4.0	5.5	4.9	3.4	22.7	8.4	16.0	5.5	3.6	1.9
85/84 D	5.1	1.8	4.7	8.8	1.7	4.0	4.1	5.7	:	3.6	25.0	8.1	16.8	5.6	3.8	1.8
86/85 J	4.7	1.3	4.2	8.2	1.5	3.5	3.6	5.5	:	2.8	25.0	9.2	14.2	5.3	3.9	1.4
86/85 F	4.1	0.7	3.4	7.7	1.3	2.5	2.6	5.1	4.6	2.1	24.4	8.9	12.6	4.7	3.2	1.8
86/85 M	3.5	0.1	3.0	7.2	0.7	1.5	1.5	4.2	:	1.7	24.8	8.7	12.2	4.1	2.3	1.1
86/85 A	3.1	-0.2	2.7	6.8	0.7	1.4	0.5	3.0	:	4.0	24.7	7.8	12.3	3.7	1.6	0.9
86/85 M	2.8	-0.2	2.3	6.4	0.5	1.1	0.4	2.8	4.4	4.0	24.5	7.7	11.5	3.4	1.6	1.1
86/85 J	2.7P	-0.2	2.3	6.3E	0.2	1.2	0.1	2.5	:	3.8E	24.4	:	11.7	3.4	:	0.5E

CONSUMER PRICES

B

PRIX A LA CONSOMMATION

GENERAL INDEX

INDICE GENERAL

	SWITZERLAND SUISSE SCHWEIZ	AUSTRIA AUTRICHE OESTERREICH	NORWAY NORVEGE NORGE	SWEDEN SUEDE SVERIGE	FINLAND FINLANDE SUOMI	CANADA CANADA CANADA
	PRICE INDICES			1980 = 100	INDICES DE PRIX	
1981 O	106.5	106.8	113.6	112.1	111.9	112.5
1982 O	112.5	112.6	126.5	121.7	122.6	124.6
1983 O	115.8	116.3	137.2	132.5	132.8	131.8
1984 O	119.2	122.9	145.7	143.2	142.2	137.6
1985 O	123.3	126.9	154.0	153.7	150.5	143.1
1985 J	123.2	127.0	154.3	153.9	151.4	143.1
1985 J	122.9	127.1	154.8	153.8	151.4	143.5
1985 A	122.9	127.1	154.4	153.8	151.7	143.8
1985 S	123.3	127.2	155.9	154.5	151.9	143.9
1985 O	123.7	127.2	156.3	155.5	152.1	144.4
1985 N	124.5	127.5	156.8	156.5	152.2	145.0
1985 D	124.6	127.8	157.3	157.1	152.3	145.7
1986 J	124.5	129.0	158.9	158.9	153.4	146.3
1986 F	124.5	129.1	159.5	159.0	154.2	146.9
1986 M	124.7	128.9	160.5	158.7	154.5	147.2
1986 A	124.6	128.6	161.6	159.7	155.1	147.5
1986 M	124.2	128.5	161.8	159.7	155.6	148.3
1986 J	124.2	:	164.8	159.7	156.4	:
	RATE OF INCREASE OVER ONE MONTH			(T/T-1)	TAUX DE CROISSANCE SUR UN MOIS	
85 J/M	-0.1	0.3	0.7	-0.4	0.3	0.6
85 J/J	-0.2	0.1	0.4	-0.1	0.0	0.3
85 A/J	0.0	0.1	-0.3	0.0	0.2	0.2
85 S/A	0.3	0.1	1.0	0.5	0.1	0.1
85 O/S	0.3	0.0	0.2	0.6	0.1	0.4
85 N/O	0.7	0.2	0.3	0.6	0.1	0.4
85 D/N	0.1	0.3	0.3	0.4	0.1	0.5
86J/85D	-0.1	0.9	1.0	1.1	0.7	0.5
86 F/J	0.0	0.1	0.4	0.1	0.5	0.4
86 M/F	0.1	-0.2	0.6	-0.2	0.2	0.2
86 A/M	-0.1	-0.2	0.7	0.6	0.4	0.2
86 M/A	-0.3	-0.1	0.1	0.0	0.3	0.5
86 J/M	0.0	:	1.7	0.0	0.5	:
	RATE OF INCREASE OVER 12 MONTHS			(T/T-12)	TAUX DE CROISSANCE SUR 12 MOIS	
85/84 J	3.4	3.2	5.9	8.1	6.4	4.1
85/84 J	3.3	3.5	5.8	7.7	6.0	3.8
85/84 A	2.9	2.6	5.6	6.9	5.8	4.0
85/84 S	3.3	2.9	5.8	6.7	5.3	4.0
85/84 O	3.0	2.7	5.6	6.9	4.9	4.2
85/84 N	3.1	2.6	5.7	6.9	4.9	4.0
85/84 D	3.3	2.8	5.6	5.6	4.9	4.4
86/85 J	2.2	2.9	6.0	6.2	4.5	4.4
86/85 F	1.3	2.5	6.1	5.3	4.6	4.1
86/85 M	1.0	1.8	5.5	4.3	3.8	4.1
86/85 A	1.0	1.4	5.8	4.6	3.7	4.0
86/85 M	0.7	1.6	5.6	3.4	3.0	4.2
86/85 J	0.8	:	6.7	3.8	3.3	:

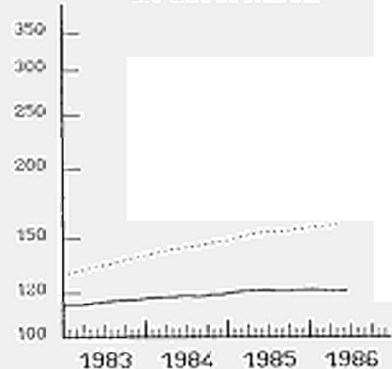
VERBRAUCHERPREISE
GESAMTINDEX

CONSUMER PRICES
GENERAL INDEX

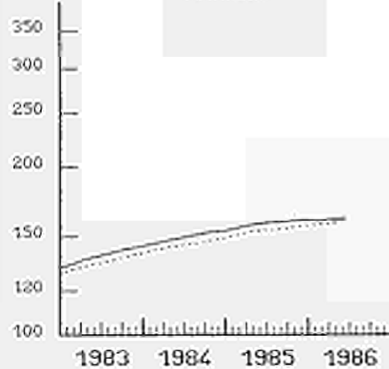
PRIX A LA CONSOMMATION
INDICE GENERAL

1980 = 100

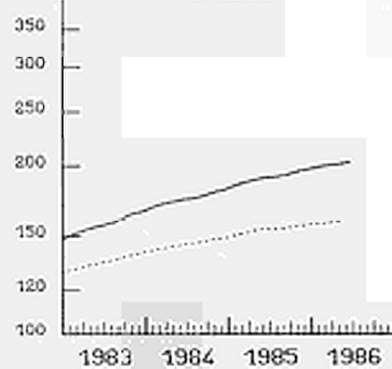
BR DEUTSCHLAND



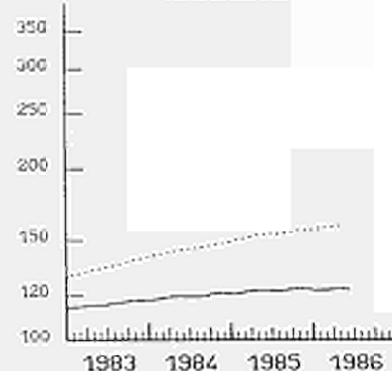
FRANCE



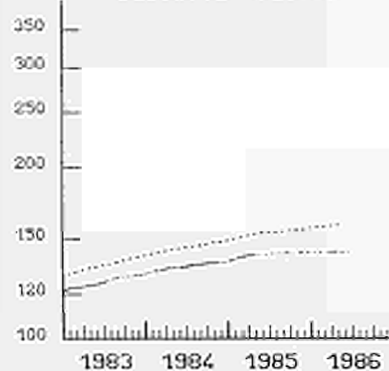
ITALIA



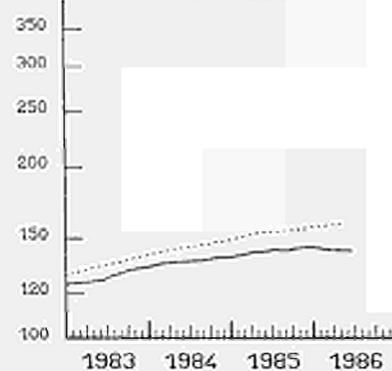
NEDERLAND



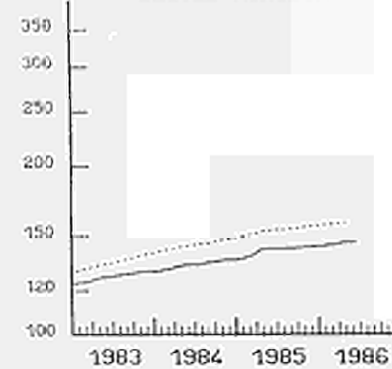
BELGIE BELGIE



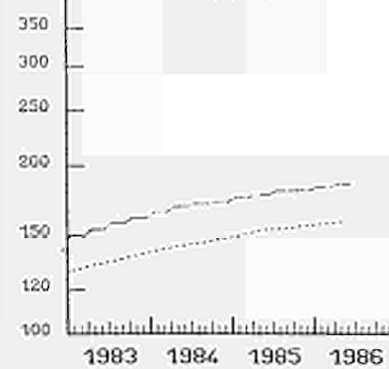
LUXEMBOURG



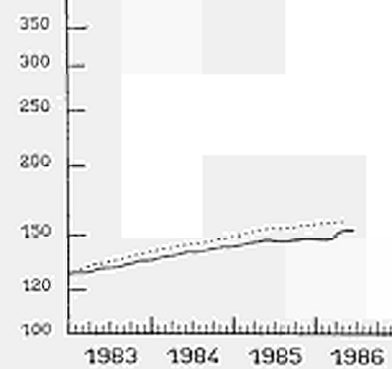
UNITED KINGDOM



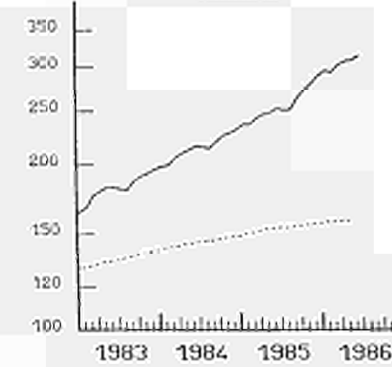
IRELAND



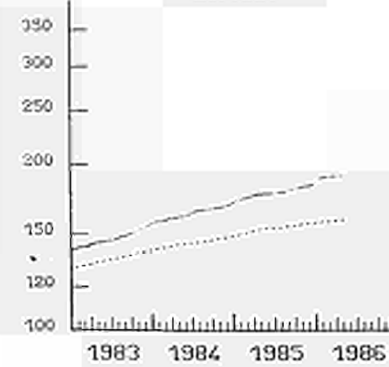
DANMARK



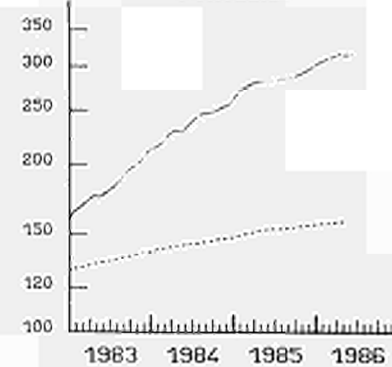
HELLAS



ESPAÑA



PORTUGAL



..... EUR 12
SEMI-LOGARITHMIC SCALE

EINFACH-LOGARITHMISCHE SKALA

ECHELLE SEMI-LOGARITHMIQUE

PURCHASING POWER PARITIES AND EXCHANGE RATES

This bulletin contains estimated purchasing power parities based on household consumption for March 1986.

These parities have been obtained by extrapolating the parities for the year 1980 in line with the consumer price indices (see methodological note).

In the first table (C) the parities are presented as a square matrix which allows each country to be compared with all the others. In effect each column gives the parities of every country with respect to a reference country.

The parities obtained in this way have been related to the official exchange rates; the ratio of purchasing power parities to exchange rates is called the price level index. These ratios are also presented in a square matrix (D). Each line at this table shows the difference between the parity and the exchange rate of the base country compared to the 15 countries. For instance on the first line, where Germany is the base country, the index for Belgium is 86.7. This means that the price level in Belgium is 13.3% lower than in Germany. The corresponding figure for Denmark is 111.6, which means that the price level in Denmark is 11.6% higher than in Germany.

For the first time Eurostat has added estimates for some non-EC countries including the United States, Japan, Canada and Austria.

They are based upon studies made by the OECD for the year 1980 which complement those already available for the EC-Member States (see annexed notes).

Generally the price level indices of the EC-countries compared to these four countries are below 100, which means that the price level in the Community is comparatively low compared to the USA, Canada and Japan. For example prices in France 8.1%, in Italy 24.6% and in the United Kingdom 17.5%. This comparison also shows that Japan has by far the highest price level of the countries whose data is presented here.

PARITEES DE POUVOIR D'ACHAT POUR LA CONSOMMATION PRIVEE

PURCHASING POWER PARITIES FOR PRIVATE CONSUMPTION

MAY 1986

	DM	FF	LIR	FL	FB	FLUX	UK #	IRL #	DKR	DRA	PTS	ESC	SCH	US \$	CAN \$	YEN
DM	1.00	2.96	522.98	1.01	17.70	16.27	0.25	0.30	4.13	38.07	41.85	36.46	6.72	0.45	0.54	98.27
FF	0.34	1.00	176.65	0.34	5.98	5.50	0.08	0.10	1.39	12.86	14.14	12.31	2.27	0.15	0.18	33.19
1000 LIR	1.91	5.66	1000.00	1.94	33.85	31.11	0.47	0.58	7.90	72.80	80.02	69.71	12.84	0.87	1.04	187.89
FL	0.99	2.92	516.43	1.00	17.48	16.07	0.24	0.30	4.08	37.59	41.33	36.00	6.63	0.45	0.54	97.03
100 FB	5.65	16.72	2954.03	5.72	100.00	91.91	1.39	1.71	23.32	215.04	236.40	205.92	37.93	2.56	3.07	555.04
100 FLUX	6.15	18.20	3214.18	6.22	108.81	100.00	1.51	1.87	25.38	233.98	257.21	224.06	41.27	2.78	3.34	603.93
UK #	4.07	12.04	2126.75	4.12	72.00	66.17	1.00	1.23	16.79	154.82	170.19	148.25	27.31	1.84	2.21	399.60
IRL #	3.29	9.75	1722.73	3.34	58.32	53.60	0.81	1.00	13.60	125.41	137.86	120.09	22.12	1.49	1.79	323.69
DKR	0.24	0.72	126.65	0.25	4.29	3.94	0.06	0.07	1.00	9.22	10.14	8.83	1.63	0.11	0.13	23.80
100 DRA	2.63	7.78	1373.68	2.66	46.50	42.74	0.65	0.80	10.85	100.00	109.93	95.76	17.64	1.19	1.43	258.11
100 PTS	2.39	7.07	1249.61	2.42	42.30	38.88	0.59	0.73	9.87	90.97	100.00	87.11	16.04	1.08	1.30	234.79
100 ESC	2.74	8.12	1434.53	2.78	48.56	44.63	0.67	0.83	11.33	104.43	114.80	100.00	18.42	1.24	1.49	269.54
SCH	0.15	0.44	77.88	0.15	2.64	2.42	0.04	0.05	0.61	5.67	6.23	5.43	1.00	0.07	0.08	14.63
US \$	2.21	6.53	1154.32	2.24	39.08	35.91	0.54	0.67	9.11	84.03	92.37	80.47	14.82	1.00	1.20	216.89
CAN \$	1.84	5.45	963.51	1.87	32.62	29.98	0.45	0.56	7.61	70.14	77.11	67.17	12.37	0.83	1.00	181.04
1000 YEN	10.18	30.13	5322.16	10.31	180.17	165.58	2.50	3.09	42.02	387.44	425.91	371.00	68.34	4.61	5.52	1000.00

INDICES DE NIVEAUX DE PRIX POUR LA CONSOMMATION PRIVEE
MAY 1986

PRICE LEVEL FOR PRIVATE CONSUMPTION

	D	F	I	NL	B	L	UK	IRL	DK	GR	SP	PORT	AUT	USA	CAN	JAP
D	100.0	92.9	76.2	89.9	86.7	79.7	83.4	92.4	111.6	60.8	65.9	54.5	95.5	101.1	88.1	131.4
F	107.6	100.0	82.0	96.8	93.3	85.8	89.7	99.4	120.1	65.4	70.9	58.7	102.8	108.8	94.8	141.4
I	131.2	121.9	100.0	118.0	113.8	104.5	109.4	121.2	146.4	79.8	86.4	71.5	125.3	132.6	115.5	172.3
NL	111.2	103.3	84.8	100.0	96.4	88.6	92.7	102.7	124.1	67.6	73.2	60.6	106.2	112.4	97.9	146.1
B	115.3	107.1	87.9	103.7	100.0	91.9	96.1	106.5	128.7	70.1	75.9	62.9	110.1	116.6	101.5	151.5
L	125.5	116.6	95.7	112.8	108.8	100.0	104.6	115.9	140.0	76.3	82.6	68.4	119.8	126.8	110.5	164.8
UK	119.9	111.5	91.4	107.9	104.0	95.6	100.0	110.8	133.9	72.9	79.0	65.4	114.6	121.3	105.6	157.6
IRL	108.2	100.6	82.5	97.3	93.9	86.3	90.2	100.0	120.8	65.8	71.3	59.0	103.4	109.4	95.3	142.2
DK	89.6	83.3	68.3	80.6	77.7	71.4	74.7	82.8	100.0	54.5	59.0	48.9	85.6	90.6	78.9	117.7
GR	164.4	152.8	125.4	147.9	142.6	131.1	137.1	151.9	183.6	100.0	108.3	89.7	96.7	166.2	144.8	216.0
SP	151.8	141.1	115.8	136.6	131.7	121.0	126.6	140.3	169.5	92.3	100.0	82.8	145.0	153.5	133.7	199.5
PORT	183.4	170.4	139.8	164.9	159.0	146.2	152.9	169.4	204.7	111.5	120.8	100.0	175.2	185.4	161.5	240.9
AUT	104.7	97.3	79.8	94.2	90.8	83.4	87.3	96.7	116.9	63.7	68.9	57.1	100.0	105.8	92.2	137.5
USA	98.9	91.9	75.4	89.0	85.8	78.8	82.5	91.4	110.4	60.2	65.1	53.9	94.5	100.0	87.1	130.0
CAN	113.5	105.5	86.6	102.1	98.5	90.5	94.7	104.9	126.7	69.0	74.8	61.9	108.5	114.8	100.0	149.2
JAP	76.1	70.7	58.0	68.5	66.0	60.7	63.5	70.3	85.0	46.3	50.1	41.5	72.7	76.9	67.0	100.0

Methodological note

The purchasing power parities for final household consumption for 1980 are calculated on the basis of extensive price surveys as described in "Comparison in real values of the aggregates of ESA". The specific parities for household consumption are updated by means of the national consumer price indices for each of the countries retained in this monthly bulletin. For each pair of countries the extrapolated parity is obtained by multiplying the 1980 parity by the relative price index.

This parity is mainly used for short term analysis of household consumption.

EUROSTAT also calculates an annual estimate of purchasing power parities of gross domestic product (see National Accounts - Aggregates), which are generally used for volume comparisons by eliminating the difference of general price level between countries.

Note méthodologique

Les parités de pouvoir d'achat de la consommation finale des ménages pour 1980 sont calculées sur la base des enquêtes de prix complètes comme décrites dans "Comparaison en valeurs réelles des agrégats du SEC". Les parités spécifiques pour la consommation des ménages sont mises à jour à l'aide des indices nationaux de prix à la consommation de chaque pays présenté dans ce bulletin mensuel. La parité extrapolée pour chaque couple de pays est obtenue en multipliant la parité de 1980 par l'indice de prix relatif.

Cette parité est utilisée principalement pour des analyses à court terme de la consommation des ménages.

EUROSTAT calcule également une estimation annuelle des parités de pouvoir d'achat pour le Produit Intérieur Brut (voir Comptes Nationaux - Agrégats) qui sont en général utilisées pour les comparaisons de volume, en éliminant la différence du niveau de prix général entre les pays.

Venta y suscripciones · Salg og abonnement · Verkauf und Abonnement · Πωλήσεις και συνδρομές
Sales and subscriptions · Vente et abonnements · Vendita e abbonamenti
Verkoop en abonnementen · Venda e assinaturas

BELGIOUE/BELGIË

Moniteur belge/Belgisch Staatsblad
Rue de Louvain 40-42/Leuvensestraat 40-42
1000 Bruxelles/1000 Brussel
Tél. 512 00 26
CCP/Postrekening 000-2005502-27

Sous-dépôts/Agentschappen:

**Librairie européenne/
Europese Boekhandel**
Rue de la Loi 244/Wetstraat 244
1040 Bruxelles/1040 Brussel

CREDOC

Rue de la Montagne 34/Bergstraat 34
Bte 11/Bus 11
1000 Bruxelles/1000 Brussel

DANMARK

Schultz EF-publikationer

Møntergade 19
1116 København K
Tlf: (01) 14 11 95
Girokonto 200 11 95

BR DEUTSCHLAND

Bundesanzeiger Verlag

Breite Straße
Postfach 10 80 06
5000 Köln 1
Tel. (02 21) 20 29-0
Fernschreiber:
ANZEIGER BONN 8 882 595
Telecopierer:
20 29 278

GREECE

G.C. Eleftheroudakis SA

International Bookstore
4 Nikis Street
105 63 Athens
Tel. 322 22 55
Telex 219410 ELEF

Sub-agent for Northern Greece:

Molho's Bookstore

The Business Bookshop
10 Tsimiski Street
Thessaloniki
Tel. 275 271
Telex 412885 LIMO

ESPAÑA

Boletín Oficial del Estado

Trafalgar 27
E-28010 Madrid
Tel. (91) 446 60 00

Mundi-Prensa Libros, S.A.

Castelló 37
E-28001 Madrid
Tel. (91) 431 33 99 (Libros)
431 32 22 (Suscripciones)
435 36 37 (Dirección)
Télex 49370-MPLI-E

FRANCE

**Service de vente en France des publications
des Communautés européennes**

Journal officiel
26, rue Desaix
75732 Paris Cedex 15
Tél. (1) 45 78 61 39

IRELAND

Government Publications Sales Office

Sun Alliance House
Molesworth Street
Dublin 2
Tel. 71 03 09

or by post

Stationery Office

St Martin's House
Waterloo Road
Dublin 4
Tel. 68 90 66

ITALIA

Licosa Spa

Via Lamarmora, 45
Casella postale 552
50 121 Firenze
Tel. 57 97 51
Telex 570466 LICOSA I
CCP 343 509

Subagenti:

Libreria scientifica Lucio de Biasio - AEIOU

Via Meravigli, 16
20 123 Milano
Tel. 80 76 79

Libreria Tassi

Via A. Farnese, 28
00 192 Roma
Tel. 31 05 90

Libreria giuridica

Via 12 Ottobre, 172/R
16 121 Genova
Tel. 59 56 93

GRAND-DUCHÉ DE LUXEMBOURG

**Office des publications officielles
des Communautés européennes**

2, rue Mercier
L-2985 Luxembourg
Tél. 49 92 81
Télex PUBOF LU 1324 b
CCP 19190-81
CC bancaire BIL 8-109/6003/200

Messageries Paul Kraus

11, rue Christophe Plantin
L-2339 Luxembourg
Tél. 48 21 31
Télex 2515
CCP 49242-63

NEDERLAND

Staatsdrukkerij- en uitgeverijbedrijf

Christoffel Plantijnstraat
Postbus 20014
2500 EA 's-Gravenhage
Tel. (070) 78 99 11

PORTUGAL

Imprensa Nacional

Av. Francisco Manuel de Melo, 5
P-1000 Lisboa
Tel. 65 39 96

Distribuidora Livros Bertrand Lda.

Grupo Bertrand, SARL

Rua das Terras dos Vales, 4-A
Apart. 37
P-2700 Amadora CODEX
Tel. 493 90 50 - 494 87 88
Telex 15798 BERDIS

UNITED KINGDOM

HM Stationery Office

HMSO Publications Centre
51 Nine Elms Lane
London SW8 5DR
Tel. (01) 211 56 56

Sub-agent:

Alan Armstrong & Associates Ltd

72 Park Road
London NW1 4SH
Tel. (01) 723 39 02
Telex 297635 AAALTD G

SCHWEIZ/SUISSE/SVIZZERA

Librairie Payot

6, rue Grenus
1211 Genève
Tél. 31 89 50
CCP 12-236

UNITED STATES OF AMERICA

**European Community Information
Service**

2100 M Street, NW
Suite 707
Washington, DC 20037
Tel. (202) 862 9500

CANADA

Renouf Publishing Co., Ltd

61 Sparks Street
Ottawa
Ontario K1P 5R1
Tel. Toll Free 1 (800) 267 4164
Ottawa Region (613) 238 8985-6
Telex 053-4936

JAPAN

Kinokuniya Company Ltd

17-7 Shinjuku 3-Chome
Shinjuku-ku
Tokyo 160-91
Tel. (03) 354 0131

Journal Department

PO Box 55 Chitose
Tokyo 156
Tel. (03) 439 0124

Price (excluding VAT) in Luxembourg • Prix publics au Luxembourg (TVA exclue)

	ECU	BFR	FF	IRL	UKL	USD
Single copy • Prix par numéro	2,23	100	16	1.60	1.40	2
Subscription • Abonnement	28,96	1 300	195	20.75	17	24



KONTORET FOR DE EUROPÆISKE FÆLLESSKABERS OFFICIELLE PUBLIKATIONER
 AMT FÜR AMTLICHE VERÖFFENTLICHUNGEN DER EUROPÄISCHEN GEMEINSCHAFTEN
 ΥΠΗΡΕΣΙΑ ΕΠΙΣΗΜΩΝ ΕΚΔΟΣΕΩΝ ΤΩΝ ΕΥΡΩΠΑΪΚΩΝ ΚΟΙΝΟΤΗΤΩΝ
 OFFICE FOR OFFICIAL PUBLICATIONS OF THE EUROPEAN COMMUNITIES
 OFICINA DE LAS PUBLICACIONES OFICIALES DE LAS COMUNIDADES EUROPEAS
 OFFICE DES PUBLICATIONS OFFICIELLES DES COMMUNAUTÉS EUROPÉENNES
 UFFICIO DELLE PUBBLICAZIONI UFFICIALI DELLE COMUNITÀ EUROPEE
 BUREAU VOOR OFFICIËLE PUBLIKATIES DER EUROPESE GEMEENSCHAPPEN
 SERVIÇO DAS PUBLICAÇÕES OFICIAIS DAS COMUNIDADES EUROPEIAS

ISSN 0258-0861