

COMMISSION OF THE EUROPEAN COMMUNITIES

Brussels, 11.05.1999
COM(99)227 final

COMMUNICATION FROM THE COMMISSION
TO THE COURT OF AUDITORS,
TO THE EUROPEAN PARLIAMENT AND THE COUNCIL

Balance sheets and accounts of the sixth, seventh and eight European Development
Funds

For the financial year 1998

Contents

I Balance sheets, statements of sources and application of funds, revenue and expenditure accounts	1 a
1. Accounting polices and valuation rules	2
1.1 Accounting policies	2
1.2 Valuation rules	4
2. 6th EDF.....	6
2.1 Balance sheet	7
2.2 Revenue and expenditure account.....	8
2.3 Statement of sources and application of funds	9
3. 7th EDF.....	10
3.1 Balance sheet	11
3.2 Revenue and expenditure account.....	12
3.3 Statement of sources and application of funds	13
4. 8th EDF.....	14
4.1 Balance sheet	15
4.2 Revenue and expenditure account	16
4.3 Statement of sources and application of funds	17
5. Statement of debts and VAT to be recovered	19
6. Notes to the accounts.....	20
6.1 Balance sheet	20
6.2 Revenue and expenditure account	24
6.3 Statement of sources and application of funds	26
6.4 Statement of debts and VAT to be recovered	27

II Management accounts - Situation of appropriations	28
Annexes	35
1. Consolidated accounts at 31.12.1998.....	36
1.1 EDF consolidated accounts at 31.12.1998.....	37
1.2 EDF consolidated accounts at 31.12.1998.....	38
1.3 6th EDF: breakdown by instrument.....	40
1.4 7th EDF: breakdown by instrument.....	41
1.5 8th EDF: breakdown by instrument.....	42
2. Situation by country and by instrument	46
2.1 6th EDF	46
2.2 7th EDF	47
2.3 8th EDF	47
3. Other management information	68
3.1 Situation of sleeping commitments	69
3.2 Local revenue and expenditure to be regularised ...	71
3.3 Advances for study awards and technical assistance contracts at 31.12.1998	72
3.4 Advances on contracts at 31.12.1998	73

I

**BALANCE SHEETS, STATEMENTS OF SOURCES AND
APPLICATION OF FUNDS,
REVENUE AND EXPENDITURE ACCOUNTS**

1. Accounting policies and valuation rules

1.1 Accounting policies

(a) Financial Regulations

The balance sheets and statements of sources and application of funds were drawn up in accordance with the Financial Regulations applicable to the 6th, 7th and 8th EDFs.

The relevant documents must be presented to the European Parliament, the Council and the Court of Auditors as provided for in Article 71 of the Financial Regulation applicable to the 7th EDF and Articles 71, 72, 73 and 74 in the case of operations relating to the 8th EDF.

These Financial Regulations stipulate that the accounts be kept according to the following principles:

Universality

All operations pertaining to each Fund are recorded. Each country has a separate record. There is a single treasury.

Justification

All operations are substantiated by supporting documents.

No set-off policy

There is no set-off between revenue and expenditure.

Calendar year

The accounts are kept by calendar year using the cash accounting method. In other words, all expenditure and revenue is registered according to the value date given on the bank statement. The balances thus established are not adjusted at the year-end.

Double-entry bookkeeping

Each operation is analysed according to two criteria and is registered to the debit of one or more accounts and to the credit of one or more accounts, so that the total amount registered on the debit side is equal to the total amount registered on the credit side.

(b) European Currency Unit (ECU)

Accounts are kept in ecus rather than euros (which did not officially exist until 1 January 1999), an ecu being a unit made up of the following amounts of Member State currencies:

BFR: 3.30100	HFL: 0.21980
DKR: 0.19760	IRL : 0.00855
DM : 0.62420	LFR: 0.13000
DRA: 1.44000	LIT : 151.80000
ESC : 1.39300	PTA: 6.88500
FF : 1.33200	UKL: 0.08784

(c) Revenue

Financial contributions are paid either in ecus or, where Member States show due reason, in national currencies into special accounts opened with the treasuries of the Member States. The Commission makes transfers from the above accounts to operational accounts held in ecus or a Member State's currency to meet the cash requirements of projects and programmes.

(d) Expenditure

Expenditure takes into account all payment orders executed by banks up to 31 December 1998. However, in the case of local expenditure in the ACP States and for those payments for which information was not communicated to the Commission's accounting departments before the end of the financial year, payments are based on the information received for the latest period prior to 31 December. The amounts of payments in question not included in the 1998 accounts are not considered to be material.

Expenditure by delegations is not finally entered into the EDF accounts until validated by the Authorising Officer and the Financial Controller. Expenditure not yet finalised is shown under the heading "expenditure to be regularised" in the balance sheet.

(e) Instalments/Advances

Instalments (an instalment is any amount paid on the basis of supporting documents pending final payment) and advances paid within the framework of the implementation of the contracts are included in the expenditure of the year and do not appear under assets in the balance sheet.

However advances for study awards and AEC advances for technical assistance are regarded as a receivable and consequently appear under assets in the balance sheet.

(f) Cash accounting

EDF appropriations are not subject to any time limit. Once granted, they are available until they are used up or reassigned. Consequently, expenditure and revenue are booked at the time of their payment or of their actual receipt.

In addition, the financial statements are drawn up on the basis of the balances as at 31 December of each year without recourse to year-end adjustment.

(g) Single treasury

For reasons of efficiency, there is a single treasury for all the EDFs being implemented. In addition, the Member States' contributions for an EDF must be used up before the contributions relating to the following EDF are called upon.

Consequently, there are receivables and debts between EDFs which are balanced out in the balance sheet because of the single treasury.

1.2 Valuation rules

(a) Revenue

Member States' contributions are paid in ecus. However, if for technical reasons, contributions are paid in national currencies, they are converted at the rates applying on the date of payment or if this date coincides with a public holiday, at the rate applying on the preceding working day.

Other revenue is booked at the rates applying on the date of receipt.

(b) Expenditure

The rates used for the conversion into ecus of payments made in local currencies for projects and programmes are those in force on the actual date of such payments. Certain contracts involve fixed exchange rates; this constitutes an exception to the general rule.

(c) Bank transfers

Transfers from accounts held in ecus to operational accounts held in local currencies are made at the rate of exchange in force on the date of such transfers.

(d) Assigned funds

Assigned funds are converted into ecus at the rate in force at the time of booking and are entered in the accounts at their historical value.

(e) Cash at bank

The rates used for converting cash at bank in national currencies into ecus at 31 December 1998 are as follows:

1 ECU = BFR	:	40.33990
DKR	:	7.44878
DM	:	1.95583
DRA	:	329.689000
ESC	:	200.482000
FF	:	6.559570
FMK	:	5.945730
HFL	:	2.203710
IRL	:	0.7875640
LFR	:	40.33990
LIT	:	1936.270000
OS	:	13.760300
PTA	:	166.386000
SKR	:	9.488030
UKL	:	0.7054550

2. 6th EDF

6TH EDF						
Balance sheet at 31 December 1998						
(thousand ecus)						
			1998		1997	
			NOTES			
ASSETS						
Long-term assets						
		3.1.1				
Initial allocation				7.500.000,00		7.500.000,00
EIB special contribution		3.1.2		60.000,00		60.000,00
Contributions received				(7.560.000,00)		(7.560.000,00)
Contributions receivable				0,00		0,00
Current assets						
Debtors						
Stabex debts to be recovered from MS		3.1.3		669.144,99		
Interest for late payment of EDF contributions		3.1.4		1.856,86		
Treasury advance to 7th EDF		3.1.5		451.135,52		689.812,41
Advances		3.1.6		26.654,88		17.907,15
				1.148.792,25		707.719,56
Cash at bank						
Treasury accounts				130.016,72		190.084,34
ACP paying agents				19.877,87		28.880,39
EUR paying agents				156.677,69		111.587,60
Stabex special accounts				407.531,23		90.995,23
				714.103,51		421.547,56
Total assets				1.862.895,76		1.129.267,12
LIABILITIES						
Fund capital (cumulative figures)						
Initial allocation				7.500.000,00		7.500.000,00
EIB special contribution				60.000,00		60.000,00
Other resources						
Transfers from earlier Funds		3.1.7		321.956,99		321.957,38
Replenishment of Stabex resources		3.1.8		185.102,55		185.102,55
Interest used		3.1.9		36.278,12		36.278,12
Interest on deposited funds		3.1.10				
Transfers to later Funds (7th EDF)		3.1.11		(181.723,92)		(181.723,92)
Transfers to later Funds (8th EDF)		3.1.11		(39.000,00)		
				322.613,75		361.614,13
Total capital				7.882.613,75		7.921.614,13
Expenditure paid						
Expenditure already booked		3.1.14		(6.931.513,53)		(6.777.641,54)
Expenditure to be regularised		3.1.15		(12.706,38)		(14.730,63)
				(6.944.219,91)		(6.792.372,17)
Balance available for payments				938.393,84		1.129.241,96
Creditors						
Net position 8th EDF		3.1.12		924.497,03		
Claims on Stabex interest		3.1.13		4,90		
Revenue to be regularised		3.1.16				25,16
				924.501,93		25,16
Total liabilities (net balance)				1.862.895,76		1.129.267,12

6th EDF					
Revenue and expenditure					
for year closed 31 December 1998					
(thousand ecus)					
			Cumulative figure 31.12.1997	Revenue/ expenditure for 1998	Cumulative figure 31.12.1998
		NOTES			
Revenue					
Contributions paid Member States	3.2.1		7.500.000,00	0,00	7.500.000,00
Contributions paid EIB	3.1.2		60.000,00	0,00	60.000,00
Interest used	3.1.9		12.200,00	0,00	12.200,00
Interest used/Stabex	3.2.2		24.078,12	0,00	24.078,12
Interest on deposited funds	3.1.10		0,00	0,00	0,00
Replenishment of Stabex resources	3.1.8		185.102,55	0,00	185.102,55
Transfers from 5th EDF	3.1.7		177.632,24	0,00	177.632,24
Transfers from 4th EDF	3.1.7		144.325,14	(0,38)	144.324,75
Transfers to 7th EDF	3.1.11		(181.723,92)	0,00	(181.723,92)
Transfers to 8th EDF	3,1,11			(39.000,00)	(39.000,00)
Total revenue			7.921.614,13	-39.000,38	7.882.613,75
Expenditure					
		3.2.3			
Total indicative programmes			4.276.330,57	119.889,41	4.396.219,98
Grants (excl. admin costs)			3.842.538,27	114.415,84	3.956.954,11
Special loans			433.792,30	5.473,57	439.265,87
Structural adjustment			5.406,68	0,00	5.406,68
Total non-programmable aid			2.489.879,05	33.707,68	2.523.586,72
Interest subsidies			84.265,83	0,00	84.265,83
Emergency aid			179.951,29	(6,63)	179.944,66
Aid for refugees			94.797,71	(80,10)	94.717,60
Risk capital			510.106,16	14.709,64	524.815,80
Sysmin			99.767,03	8.871,43	108.638,46
Stabex			1.451.123,08	0,00	1.451.123,08
Transfer from 4th EDF			69.867,96	10.213,33	80.081,28
Total			6.771.616,29	153.597,09	6.925.213,38
Administrative and financial costs	3.2.4		6.025,25	274,91	6.300,15
Total expenditure booked			6.777.641,54	153.871,99	6.931.513,53
Expenditure to be regularised	3.1.15		14.730,63	(2.024,25)	12.706,38
Total expenditure			6.792.372,17	151.847,74	6.944.219,91
Difference revenue/expenditure			1.129.241,96	(190.848,12)	938.393,84

6th EDF			
Statement of sources and application of funds			
for year closed 31 December 1998			
(thousand ecus)			
		NOTES	
Sources			
Reduction in expenditure to be regularised	3.3.1		2.024,25
Reduction in advances for study awards	3.3.1		3.021,82
Reduction in amount owed by 7th EDF	3.3.2		238.676,89
Net position 8th EDF	3.3.12		924.497,03
Claims on Stabex interest	3.1.13		4,90
			1.168.224,89
Applications			
Expenditure for the year	3.3.5		153.871,99
Increase in advances to EAC	3.3.6		11.769,56
Transfers to 8th EDF	3.3.7		39.000,00
Stabex contributions to be recovered	3.1.3		669.144,99
Claims on EDF contributions	3.1.4		1.856,86
Reduction in revenue to be regularised	3.1.16		25,16
Transfers from 4th EDF	3.3.7		0,38
			875.668,94
Difference corresponding to increase in cash at bank			292.555,95

3. 7th EDF

		7th EDF			
Balance sheet at 31 December 1998					
(thousand ecus)					
		NOTES		1998	1997
ASSETS					
Long-term assets					
		3.1.1			
Initial allocation				10.940.000,00	10.940.000,00
Contributions received				(6.300.000,00)	(4.999.887,83)
Contributions receivable				4.640.000,00	5.940.112,17
Current assets					
Debtors				0,00	0,00
Cash at bank				0,00	0,00
				0,00	0,00
Total assets				4.640.000,00	5.940.112,17
LIABILITIES					
Fund capital (cumulative figures)					
Initial allocation				10.940.000,00	10.940.000,00
Other resources					
Transfers from earlier Funds		3.1.7	708.502,42		708.501,58
Resources transferred to 8th EDF		3.1.11	-253.000,00		
Interest used		3.1.9	146.347,05		106.347,05
Interest on deposited funds		3.1.4	39.278,30		70.439,86
Interest for late payment of contributions		3.1.4	1.856,86		
				642.984,64	885.288,49
Total capital				11.582.984,64	11.825.288,49
Expenditure					
Expenditure already booked		3.1.14		(7.394.120,16)	(6.574.988,74)
Balance available for payments				4.188.864,48	5.250.299,75
Creditors					
Treasury advance from 6th EDF		3.1.11	451.135,52		689.812,41
				451.135,52	689.812,41
Total liabilities (net balance)				4.640.000,00	5.940.112,16

7th EDF					
Revenue and expenditure					
for year closed 31 December 1998					
(thousand ecus)					
			Cumulative figure 31.12.1997	Revenue/Expenditure for 1998	Cumulative figure 31.12.1998
	NOTES				
Revenue					
Contributions paid	3.2.1		4.999.887,83	1.300.112,17	6.300.000,00
Interest used	3.1.9		9.000,00	40.000,00	49.000,00
Interest	3.1.9		51.070,50	(39.097,29)	11.973,21
Interest used/Stabex	3.2.2		97.347,05	0,00	97.347,05
Interest/Stabex	3.1.9		19.369,36	7.935,73	27.305,10
Transfers from 5th and 6th EDFs	3.1.11		708.501,58	0,84	708.502,42
Interest for late payment of contributions	3.1.4			1.856,86	1.856,86
Resources transferred to 8th EDF	3.1.11			(253.000,00)	(253.000,00)
Total revenue			5.885.176,33	1.057.808,31	6.942.984,64
Expenditure	3.2.3				
Total indicative programmes			2.511.106,77	599.283,62	3.110.390,39
Grants			2.489.919,57	620.470,82	3.110.390,39
Grants advance to 8th EDF			21.187,20	-21.187,20	0,00
Structural adjustment			1.090.906,30	40.071,17	1.130.977,47
Total non-programmable aid			2.972.975,67	179.776,63	3.152.752,30
Interest subsidies			147.075,50	27.050,06	174.125,56
Emergency aid			394.643,34	5.665,62	400.308,96
Aid for refugees			73.739,64	5.598,65	79.338,28
Risk capital			430.578,20	133.575,04	564.153,24
Sysmin			136.138,95	32.960,65	169.099,59
Stabex			1.556.438,36	11.115,28	1.567.553,63
Stabex advance to 8th EDF			72.854,78	-72.854,78	0,00
Transfers from 5th EDF			161.506,91	32.076,12	193.583,03
Reduction in amount owed by highly indebted countries				4.590,00	4.590,00
Total expenditure			6.574.988,74	819.131,42	7.394.120,16
Difference revenue/expenditure			(689.812,41)	238.676,89	(451.135,52)

4. 8th EDF

8TH EDF					
Balance sheet at 31 December 1998					
(thousand ecus)					
ASSETS					
				NOTES	
Long-term assets				3.1.1	
Initial allocation					
	EDF				11.040.000,00
	Stabex				1.800.000,00
TOTAL					12.840.000,00
Contributions called upon during the year					
	EDF				
	Stabex			-1.080.000,00	
Total					-1.080.000,00
Contributions still to be called upon					
	EDF			11.040.000,00	
	Stabex			720.000,00	
TOTAL					11.760.000,00
Total assets					11.760.000,00
LIABILITIES					
Fund capital (cumulative figures)					
Initial allocation					
	EDF				11.040.000,00
	Stabex				1.800.000,00
Other resources					
Transfers from previous EDFs				3.1.7	292.000,00
Interest on deposited funds				3.1.10	5.500,00
Stabex contributions and interest				3.1.17	13.617,78
					<u>311.117,78</u>
Total capital					311.117,78
Expenditure					
Expenditure already booked				3.1.14	(466.620,75)
Treasury advances from 6th EDF				3.1.7	(924.497,03)
Total					(1.391.117,78)
Total liabilities					11.760.000,00

8th EDF					
Revenue and expenditure					
for year closed 31 December 1998					
(thousand ecus)					
			Cumulative figure 31.12.1997	Revenue/ expenditure for 1998	Cumulative figure 31.12.1998
	NOTES				
Revenue				Annual variation	Closing balance
Stabex contribution	3.2.1		0,00	1.080.000,00	1.080.000,00
Interest used	3.1.9		0,00	5.500,00	5.500,00
Interest / Stabex	3.2.2		0,00	13.617,79	13.617,79
Transfers from 6th and 7th EDFs	3.1.11		0,00	292.000,00	292.000,00
Total revenue			0,00	1.391.117,79	1.391.117,79
Expenditure	3.2.3				
Total indicative programmes			0,00	45.315,95	45.315,95
Structural adjustment			0,00	239.460,00	239.460,00
Total non-programmable aid			0,00	181.844,80	181.844,80
Emergency aid			0,00	6.993,50	6.993,50
Risk capital			0,00	23.049,02	23.049,02
Stabex			0,00	151.051,82	151.051,82
Technical assistance costs			0,00	750,46	750,46
Total expenditure			0,00	466.620,75	466.620,75
Difference revenue/expenditure			0,00	924.497,03	924.497,03

8th EDF			
Statement of sources and application of funds			
for year closed 31 December 1998			
(thousand ecus)			
		NOTES	
Sources			
Stabex contribution		4.3.1	1.080.000,00
Interest used		3.1.9	5.500,00
Interest / Stabex		3.2.2	13.617,79
Transfers from 6th and 7th EDFs		3.1.11	292.000,00
			1.391.117,79
Applications			
Expenditure for the year		3.3.5	466.620,75
Transfers to 6th EDF		3.3.7	924.497,03
			1.391.117,79

5. Statement of debts and VAT to be recovered (6th, 7th and 8th EDFs)

CLAIMS AND VAT TO BE RECOVERED				
6th, 7th and 8th EDFs				
for year closed 31 December 1998				
(thousand ecus)				
			VAT	CLAIMS
To be recovered at start of year			177,05	1.652,41
Entitlements established during year				3.280,54
Amounts recovered during year				(2.525,55)
Claims still to be recovered			177,05	2.407,40

6. Notes to the accounts

6.1 Balance sheet

Assets

All the resources still available for payments (i.e. the Fund's available capital) are carried under assets in the balance sheet.

- 3.1.1 Contributions not yet paid by the Member States to the EDF constitute long-term assets.
- 3.1.2 The special EIB contribution provided for by Council Decision 87/592/EEC of 14 December 1987 has been used to finance the special programme for highly indebted countries.
- 3.1.3. This heading shows amounts owed by the Member States in respect of Stabex (8th EDF).
- 3.1.4 The amount shown corresponds to the interest owed by Member States for late payment of EDF contributions, as provided for in the Financial Regulations. The breakdown by Member State is as follows (ECU thousand):

Belgium:	297.99
Spain	40.98
France	1293.12
Luxembourg	17.44
Netherlands	110.70
United Kingdom	<u>96.63</u>
TOTAL:	1856.86

- 3.1.5 This heading shows the amount advanced to the 7th EDF because of the existence of a single treasury (at present under the 6th EDF) for all the EDFs being implemented.
- 3.1.6 This amount corresponds to advances paid to the AEC and advances for study awards.

Treasury accounts

Accounts with the central banks of the Member States into which EDF contributions are paid. All the contributions except those of Germany are paid in ecus.

ACP paying agents

Amounts held in bank accounts in the ACP states used for making payments locally. The accounts are generally kept in ecus, but may also be kept in a currency of a Community Member State.

Paying agents in Europe

All the accounts with commercial banks established in the Member States. The accounts are kept in ecus and are used for payments to beneficiaries within the Union. Payments are generally made in ecus, but may also be made in other European currencies. The funds are eventually transferred to accounts in the various ACP countries.

Stabex account

All transactions relating to the Stabex system are entered in this account. The funds available are made up of three components:

(a) Securities

At 31 December the following securities were held:

	Book value (ECU)	Interest/purchase (ECU)
Grossbritannien	30 135 000	812 500.00
Frankreich	30 174 000	608 219,18
Bremer LB Kreditbank	34 993 000	
Merrilync & Co	39 920 000	
Associates Corp N. America	49 840 000	
Rheinhyp Rhein	<u>34 972 000</u>	
	220 034 000	<u>1 420 719.18</u>

TOTAL: ECU 221 454 719.18

(b) Deposits

7-day deposits:	ECU 155 000.000
48-hour deposits:	ECU 3 940 804
TOTAL:	ECU 158 940 804

C) Interest due: ECU 27 670 941.

The total amount held in respect of Stabex therefore comes to ECU 408 066 464 (the sum of the three headings).

This figure was arrived at following a final check on the books of Sal Oppenheim, the bank responsible for managing the account, the EDF accounts having already been closed. The difference vis-à-vis the amount in the balance sheet will be adjusted when the 1999 accounts are opened.

Liabilities

The various balance sheet headings show only cumulated amounts. Annual variations in headings for capital and expenditure are set out in the statement of revenue and expenditure for the financial year.

3.1.7 This heading shows resources transferred from other funds, which increase the appropriation of the receiving Fund and reduce that of the Fund of origin.

3.1.8 Replenishment of Stabex resources

This heading comprises direct contributions by the ACP States (replenishment of resources) and the amounts by which transfer entitlements have been reduced at the request of the ACP States. The obligation to replenish Stabex resources was abolished by the ACP-EEC Council Decision of 19 November 1991. The amounts booked in 1996 are primarily accounting resources.

3.1.9 The interest earned on accounts with European paying agents can be used to finance projects according to Article 9 of the internal agreement.

This heading represents the amount of interest on deposited funds committed for the financing of projects. This interest leads to an effective increase in the Fund's overall appropriation.

3.1.10. The "interest on deposited funds" heading gives the interest earned on deposited funds which are not used to finance projects.

At the moment, all this interest is booked to the 7th EDF.

3.1.11 The amounts shown represent transfers between the various EDFs.

- 3.1.12 This amount is the difference between revenue booked to the 8th EDF (for Stabex) and expenditure under the 8th EDF in 1998.
- 3.1.13 Surplus paid by a Member State when a call was made for Stabex contributions.
- 3.1.14 This amount represents the expenditure booked to the accounts for the projects in question.
- 3.1.15 Expenditure to be regularised comprises all payments awaiting final entry in the accounts for particular projects.

These amounts concern expenditure which can be charged to either the 6th or 7th EDF. Given the current rate of implementation of the two EDFs, the greater part of this expenditure will be charged to the 7th EDF. As there is a single treasury, at this stage all expenditure has been booked to the 6th EDF

This heading relates largely to local payments made during December and still being processed under the normal accounting procedure (accounting officer - authorising officer - financial controller). The majority of movements under this heading therefore relate to expenditure already effected which therefore does actually reduce capital available.

The total amount of expenditure to be regularised is ECU 693 650.16 million, and relates to adjustments to the balances of ACP paying agents' accounts at 31 December 1998.

- 3.1.16 The amount shown in the 1997 accounts as revenue to be regularised was regularised in 1998.
- 3.1.17 Under the 8th EDF, Member States may defer payment of their Stabex contributions. The amount of the contribution then constitutes a debt which generates interest. The breakdown by Member State is as follows (capital + interest, ECU thousand):

Belgium	665.46
Denmark	445.32
France	5077.56
Germany	4084.74
Greece	0.00
Ireland	85.65
Italy	0.00
Luxembourg	1.42
Netherlands	20.01
Portugal	152.06
Spain	0.00
United Kingdom	2007.72

Finland	0.00
Sweden	524.11
Austria	553.73
TOTAL:	13 617.78

6.2 Revenue and expenditure account

Introduction

This table shows in aggregate form all revenue and expenditure relating to the various EDFs.

Revenue is broken down by heading. Revenue from the same source is grouped under the same heading.

Expenditure is broken down according to the instruments provided by the financial protocol to the Lomé Convention. In certain cases, the principal instruments are broken down into subheadings.

This table is made up of three columns. The first shows the balance carried forward for each heading at the beginning of the financial year. The second shows the year's changes for each heading. The third gives the balance for each heading booked at the year end.

Since this table shows all revenue and expenditure, the balance must be equal to the Fund's treasury. The real treasury includes all the other assets except amounts due from the Member States (contributions remaining to be paid plus interest on arrears).

3.2.1 Sum of the contributions paid by the Member States to the EDF at 31 December 1998. In the case of the 7th EDF, an exchange-rate loss of ECU 112.17 on the German contribution in previous years has been offset by interest on deposited funds.

3.2.2 The Stabex operating rules stipulate that the interest earned by the balance in hand is automatically added to Stabex resources and can, consequently, be committed in the same way as the initial appropriation.

The "interest used/Stabex" heading relates to interest already used to finance Stabex projects.

3.2.3 The Fund's total expenditure from the date of its creation up to 31 December 1998 is broken down by instrument.

3.2.4 Total administrative expenditure is broken down as follows:

Project	6.1.1	Current financial costs	-57 188.96
	6.1.2	Exceptional profit and loss	103 361.65
	6.1.3	Interest on arrears	47 925.11
	6.1.4	Revaluation at end of year	3 210 133.75
	6.1.5	Payments and VAT recovered	260 476.38
	6.1.6	Costs and sundry revenue	9 191.36
	6.1.9	Interest and bank charges on account for advances on study grants	955.49
	6.1.10	Technical assistance costs	<u>143 448.88</u>
		Total	3 788 999.88
Project 6.6		Auditing and valuation costs financed by interest	2 511 153.42
		TOTAL:	6 300 153.30

6.3 Statement of sources and application of funds

Introduction

Neither the balance sheet nor the revenue and expenditure account give a full picture of the origin of the funds made available to the EDF during the year or how these funds were used. The statement of sources and application of funds does this.

This statement shows the movements of funds during the period in question. The expression "movements of funds" means any use or source of funds. For any given period, sources and applications of funds must balance, since any use of funds must be financed in full beforehand.

The statement of sources and application of funds is drawn up on the basis of the balance sheet and the revenue and expenditure account for the period in question. Movements of funds correspond to changes relating to the headings in these two documents. Increases in assets and reductions in liabilities correspond to application of funds, whereas reductions in assets and increases in liabilities correspond to their sources.

Variations in bank balances are not taken into account and the difference between the sources and applications of funds is reflected in the changes to the available balance.

Sources

- 3.3.1 Reductions under these headings are offset by an increase in the expenditure booked in the accounts for projects. They are hence considered to be sources of funds.

- 3.3.2 This heading exists because of the single treasury for all EDFs under implementation. In addition, Member States make payments for only one Fund at a time. As soon as a Fund is used up, the Commission calls for contributions to the following Fund.

- 3.3.3 See notes 3.1.12 and 3.1.13.
- 3.3.4

- 4.3.1 Contributions paid correspond to cash deposited by the Member States during the financial year in the treasury accounts.

- 4.3.2 All interest booked to the "interest" and "interest/Stabex" headings appears under this heading.

Application of funds

- 3.3.5 Expenditure for the year represents applications of Funds financed either by an outgoing payment or by a reduction in the heading "expenditure to be regularised".
- 3.3.6 All advances paid out are financed by a negative cash movement and therefore constitute a withdrawal of funds.
- 3.3.7 Transfers of appropriations which were not used under other EDFs increase the overall appropriation of the receiving Fund and reduce that of the Fund of origin.

6.4 Statement of debts and VAT to be recovered

Amounts to be recovered are not finally booked to projects until they have been collected. Their booking constitutes a reduction in expenditure rather than an increase in resources. Consequently movements of such amounts are not individually shown in balances and special methods have to be used to identify them.

A separate table has therefore been introduced for amounts to be recovered which have been removed from other financial statements in order to ensure consistency between the balances and financial statements (balance sheet and revenue and expenditure account). Moreover, the Financial Regulation applicable to the 8th EDF specifically provides for such a table.

The table shows debts still to be recovered at the beginning of the year, amounts collected and the balance of debts still to be recovered at the end of the year.

2

MANAGEMENT ACCOUNTS

SITUATION OF APPROPRIATIONS

SITUATION OF APPROPRIATIONS (ECUS) - 6TH EDF AT 31.12.1998

BREAKDOWN OF FUNDS

	INITIAL APPROPRIATION	RESOURCES OR DEDUCTIONS AT 31.12.1997	RESOURCES OR DEDUCTIONS DURING 1998	NEW APPROPRIATION
ACP				
Grants	4.362.500.000,00	260.989.793,84	14.249.473,63	4.637.739.267,47
Special loans	600.000.000,00	-96.045.428,71	-39.006.747,47	464.947.823,82
Interest-rate subsidies	207.500.000,00	-125.840.235,49		81.659.764,51
Emergency aid	210.000.000,00	-30.610.052,82	44.040,83	179.433.988,01
Aid for refugees	80.000.000,00	16.856.726,25	-1.286.766,99	95.569.959,26
Risk capital	600.000.000,00	0,00		600.000.000,00
Stabex	925.000.000,00	523.875.912,53		1.448.875.912,53
Sysmin	415.000.000,00	-256.700.000,00		158.300.000,00
Transfer 4th EDF - 6th EDF	0,00	119.560.769,52	-13.000.384,57	106.560.384,95
Structural adjustment	0,00	6.000.000,00		6.000.000,00
TOTAL ACP (1)	7.400.000.000,00	418.087.485,12	-39.000.384,57	7.779.087.100,55
OCT				
Grants	48.500.000,00	7.830.738,37	4.675.000,00	61.005.738,37
Special loans	25.000.000,00	-4.444.254,37	-4.675.000,00	15.880.745,63
Interest-rate subsidies	2.500.000,00	106.062,69		2.606.062,69
Emergency aid	3.000.000,00	-2.489.325,51		510.674,49
Aid for refugees	1.000.000,00	-1.000.000,00		0,00
Risk capital	15.000.000,00	0,00		15.000.000,00
Stabex	4.000.000,00	0,00		4.000.000,00
Sysmin	1.000.000,00	0,00		1.000.000,00
Transfer 4th EDF - 6th EDF	0,00	3.523.425,21		3.523.425,21
TOTAL OCT (2)	100.000.000,00	3.526.646,39	0,00	103.526.646,39
TOTAL (1) + (2)	7.500.000.000,00	421.614.131,51	-39.000.384,57	7.882.613.746,94

SITUATION OF APPROPRIATIONS (ECUS) - ACP 6th EDF AT 31.12.1998

	GRANTS	SPECIAL LOANS	INTEREST-RATE SUBSIDIES	EMERGENCY AID	AID FOR REFUGEES	RISK CAPITAL
SITUATION AT 31.12.1997	4.623.489.793,84	503.954.571,29	81.659.764,51	179.389.947,18	96.856.726,25	600.000.000,00
(1) transfer from aid for refugees to grants (Lomé III Convention, Art. 205(3)).	1 286.766,99				-1 286 766,99	
(2) Re-provisioning of emergency aid from grants on the re-opening of a project, following prior transfer from emergency aid to grants	-44.040,83			44.040,83		
(3) Transformation of special loans into grants (Council Decision 95/580/EC of 20/12/1995).	39.006.747,47	-39.006.747,47				
(4) Transfer to 8th EDF Internal Agreement for 2nd Protocol of 4th ACP-EC Convention (Art. 1 (2ii)).	-26.000.000,00					
SITUATION AT 31.12.1998	4.637.739.267,47	464.947.823,82	81.659.764,51	179.433.988,01	95.569.959,26	600.000.000,00

	STABEX	MINING PRODUCTS	TRANSFER 4th EDF - 6th EDF	STRUCTURAL ADJUSTMENT	TOTAL ACP
SITUATION AT 31.12.1997	1.448.875.912,53	158.300.000,00	119.560.769,52	6.000.000,00	7.818.087.485,12
(4) Transfer to 8th EDF Internal Agreement for 2nd Protocol of 4th ACP-EC Convention (Art. 1 (2ii)).			-13.000.000,00		-39 000 000,00
(5) Transfer of the remaining non-allocated grants from the first 5 EDFs to non-allocated grants of 7th EDF. (Council Decision : 597 of 19/12/1997 Art. 1).			-384,57		-384,57
SITUATION AT 31.12.1998	1.448.875.912,53	158.300.000,00	106.560.384,95	6.000.000,00	7.779.087.100,55

SITUATION OF APPROPRIATIONS (ECUS) - OCT 6th EDF AT 31.12.1998

	GRANTS	SPECIAL LOANS	INTEREST-RATE SUBSIDIES	EMERGENCY AID	AID FOR REFUGEES	RISK CAPITAL
SITUATION AT 31.12.1997	56.330.738,37	20.555.745,63	2.606.062,69	510.674,49	0,00	15.000.000,00
(1) Transformation of special loans into grants (Council decision 97/803/EC of 24/11/97 (Art. 155 bis))	4.675.000,00	-4.675.000,00				
SITUATION AT 31.12.1998	61.005.738,37	15.880.745,63	2.606.062,69	510.674,49	0,00	15.000.000,00

	STABEX	MINING PRODUCTS	TRANSFER 4th EDF - 6th EDF	TOTAL OCT
SITUATION AT 31.12.1997	4.000.000,00	1.000.000,00	3.523.425,21	103.526.646,39
SITUATION AT 31.12.1998	4.000.000,00	1.000.000,00	3.523.425,21	103.526.646,39

SITUATION OF APPROPRIATIONS (ECUS) - 7th EDF AT 31.12.1998

BREAKDOWN OF FUNDS

	INITIAL APPROPRIATION	RESOURCES OR DEDUCTIONS AT 31.12.1997	RESOURCES OR DEDUCTIONS DURING 1998	NEW APPROPRIATION
ACP				
Grants	6.215.000.000,00	-58.960.175,40	-170.187.926,11	5.985.851.898,49
Interest-rate subsidies	280.000.000,00	0,00		280.000.000,00
Emergency aid	250.000.000,00	162.000.000,00		412.000.000,00
Aid for refugees	100.000.000,00	-12.000.000,00		88.000.000,00
Risk capital	825.000.000,00	0,00		825.000.000,00
Stabex	1.500.000.000,00	292.958.238,50	-68.306.089,27	1.724.652.149,23
Sysmin	480.000.000,00	0,00		480.000.000,00
Transfer 5th EDF - 7th EDF	0,00	429.418.968,34	-6.569.410,69	422.849.557,65
Structural adjustment	1.150.000.000,00	6.000.000,00		1.156.000.000,00
Heavily indebted poor countries			40.000.000,00	40.000.000,00
TOTAL ACP	(1) 10.800.000.000,00	819.417.031,44	-205.063.426,07	11.414.353.605,37
OCT				
Grants	97.500.000,00			97.500.000,00
Interest-rate subsidies	6.000.000,00			6.000.000,00
Emergency aid	2.500.000,00			2.500.000,00
Aid for refugees	500.000,00			500.000,00
Risk capital	25.000.000,00			25.000.000,00
Stabex	6.000.000,00			6.000.000,00
Sysmin	2.500.000,00			2.500.000,00
Transfer 5th EDF - 7th EDF	0,00	14.800.964,10		14.800.964,10
TOTAL OCT	(2) 140.000.000,00	14.800.964,10	0,00	154.800.964,10
SUNDRY REVENUE	(3) 0,00	51.070.499,79	-37.240.430,95	13.830.068,84
TOTAL	(1) +(2)+ (3)	885.288.495,33	-242.303.857,02	11.582.984.638,31

SITUATION OF APPROPRIATIONS (ECUS) - ACP 7th EDF AT 31.12.1998

	GRANTS	INTEREST-RATE SUBSIDIES	EMERGENCY AID	AID FOR REFUGEES	RISK CAPITAL	STABEX
SITUATION AT 31.12.1997	6.156.039.824,60	280.000.000,00	412.000.000,00	88.000.000,00	825.000.000,00	1.792.958.238,50
(1) Transfer to 8th EDF Internal Agreement for 2nd Protocol of 4th ACP-EC Convention (Art. 1 (2b))	-253.000.000,00					
(2) Transfer of the remaining non-allocated grants from the first 5 EDFs to non allocated grants of 7th EDF (Council Decision 597 dated 19/12/97 Art 1).	6.570.249,89					
(3) Reversal of temporary transfer to Stabex in FY 1996 (Ref. Council Decision 2/96 dated 28/6/96)	76.241.824,00					-76.241.824,00
(4) Stabex 1998 interest						7.935.734,73
SITUATION AT 31.12.1998	5.985.851.898,49	280.000.000,00	412.000.000,00	88.000.000,00	825.000.000,00	1.724.652.149,23

	MINING PRODUCTS	TRANSFER 5th EDF - 7th EDF	STRUCTURAL ADJUSTMENT	HEAVILY INDEBTED POOR COUNTRIES	SUNDRY REVENUE	TOTAL ACP
SITUATION AT 31.12.1997	480.000.000,00	429.418.968,34	1.156.000.000,00	0,00	51.070.499,79	11.670.487.531,23
(1) Transfer to 8th EDF Internal Agreement for 2nd Protocol of 4th ACP-EC Convention (Art. 1 (2b))						-253.000.000,00
(2) Transfer of the remaining non-allocated grants from the first 5 EDFs to non allocated grants of 7th EDF (Council Decision 597 dated 19/12/97 Art 1).		-6.569.410,69				839,20
(4) Stabex 1998 interest						7.935.734,73
(5) Transfer of funds upon creation of new instrument (Council Decision 895/698 dated 6/07/98).				40.000.000,00	-40.000.000,00	
(6) Transfer to 8th EDF of interest received on funds on deposit (Council Decision 98/461/CE dated 13/07/98)					-5.500.000,00	-5.500.000,00
(7) Interest on funds on deposit					6.402.705,42	6.402.705,42
(8) Late payment interest receivable from Member States					1.856.863,63	1.856.863,63
SITUATION AT 31.12.1998	480.000.000,00	422.849.557,65	1.156.000.000,00	40.000.000,00	13.830.068,84	11.428.183.674,21

(2) Additional explanatory note:
The "grants" allocation was increased by an amount of XEU 6.570.249,89 (refer Council Decision 597 dated 19/12/97 Art. 1)
The increase may be analyzed as follows:

Transfers from the 5th to the 7th EDF	6.569.410,69
Transfers from the 4th to the 6th EDF	384,57
Repayment of 5th EDF repayment subsidy	454,63
	6.570.249,89

SITUATION OF APPROPRIATIONS (ECUS) - OCT 7th EDF AT 31.12.1997

	GRANTS	INTEREST-RATE SUBSIDIES	EMERGENCY AID	AID FOR REFUGEES	RISK CAPITAL
SITUATION AT 31.12.1996	97.500.000,00	6.000.000,00	2.500.000,00	500.000,00	25.000.000,00
SITUATION AT 31.12.1997	97.500.000,00	6.000.000,00	2.500.000,00	500.000,00	25.000.000,00

	STABEX	MINING PRODUCTS	TRANSFER 5th EDF - 7th EDF	TOTAL OCT
SITUATION AT 31.12.1996	6.000.000,00	2.500.000,00	14.800.964,10	154.800.964,10
SITUATION AU 31.12.1997	6.000.000,00	2.500.000,00	14.800.964,10	154.800.964,10

SITUATION OF APPROPRIATIONS (ECUS) - 8th EDF AT 31.12.1998

BREAKDOWN OF FUNDS

	INITIAL APPROPRIATION	RESOURCES OR DEDUCTIONS DURING 1998	NEW APPROPRIATION
ACP			
Grants	7.562.000.000,00		7.562.000.000,00
Interest-rate subsidies	370.000.000,00		370.000.000,00
Emergency aid	140.000.000,00		140.000.000,00
Aid for refugees	120.000.000,00		120.000.000,00
Risk capital	1.000.000.000,00		1.000.000.000,00
Stabex (b)	1.800.000.000,00	13.617.785,43	1.813.617.785,43
Sysmin	575.000.000,00		575.000.000,00
Structural adjustment	1.400.000.000,00		1.400.000.000,00
Utilisation of interest income (a)		5.500.000,00	5.500.000,00
TOTAL ACP	12.967.000.000,00	19.117.785,43	12.986.117.785,43
OCT			
Grants	115.000.000,00		115.000.000,00
Interest-rate subsidies	8.500.000,00		8.500.000,00
Emergency aid	3.000.000,00		3.000.000,00
Aid for refugees	500.000,00		500.000,00
Risk capital	30.000.000,00		30.000.000,00
Stabex	5.500.000,00		5.500.000,00
Sysmin	2.500.000,00		2.500.000,00
TOTAL OCT	165.000.000,00	0,00	165.000.000,00
TOTAL	13.132.000.000,00	19.117.785,43	13.151.117.785,43
	(1) + (2)		
	(2)	0,00	

(a) Transfer from 7th EDF of interest received on funds on deposit (Council Decision 98/461/CE dated 13/07/98).

(b) Interest due on STABEX contributions not paid during 1998 was only booked as a receivable in the treasury accounts. It does however represent an increase of the capital of the Fund and should therefore be treated as new resources made available.

ANNEXES

1. EDF CONSOLIDATED ACCOUNTS AS AT 31.12.1998

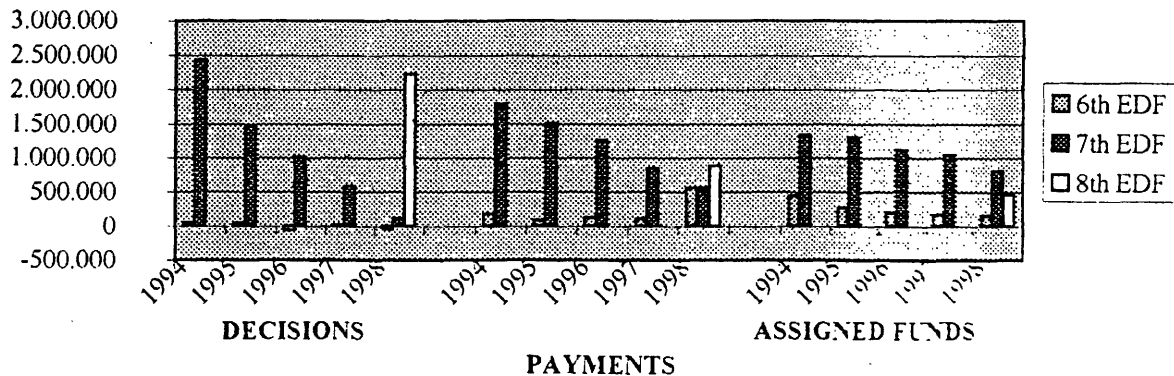
EDF CONSOLIDATED ACCOUNTS AT 31.12.1998 : ANNUAL FIGURES (ECU '000)

APPROPRIATIONS	6th EDF	7th EDF	8th EDF	6th,7th &8th
Programmable aid	5.179.574	6.083.352	7.677.000	18.939.925
Structural adjustment (SAF)	6.000	1.156.000	1.400.000	2.562.000
Non-programmable aid	2.586.956	3.892.152	4.074.118	10.553.226
Transfers to other Funds	110.084	437.651		547.734
Sundry revenue	0	13.830		13.830
TOTAL	7.882.614	11.582.985	13.151.118	32.616.716

		AGGREGATE TOTAL		ANNUAL FIGURES				
		As at 31/12/98	% of appropriation	1994	1995	1996	1997	1998
DECISIONS	6th EDF	7.488.991	95	47.806	45.601	-53.008	24.216	-44.644
	7th EDF	10.435.334	90	2.432.908	1.474.489	1.017.873	591.769	116.834
	8th EDF	2.224.097	17					2.224.097
	TOTAL	20.148.422		2.480.714	1.520.090	964.865	615.985	2.296.287
ASSIGNED FUNDS	6th EDF	7.160.980	91	180.667	89.818	120.457	109.117	563.443
	7th EDF	8.718.221	75	1.790.247	1.505.878	1.259.557	852.298	563.443
	8th EDF	893.967	7					893.967
	TOTAL	16.773.168		1.970.914	1.695.696	1.380.014	961.415	2.020.853
PAYMENTS	6th EDF	6.931.514	88	449.216	268.197	199.131	173.843	153.872
	7th EDF	7.394.120	64	1.332.358	1.295.514	1.118.250	1.038.852	819.131
	8th EDF	466.621	4					466.621
	TOTAL	14.792.254		1.781.574	1.563.711	1.317.381	1.212.695	1.439.624

* Negative figures represent decommitments.

EDF consolidated accounts as at 31 DEC 1998: annual figures (ECU '000s)

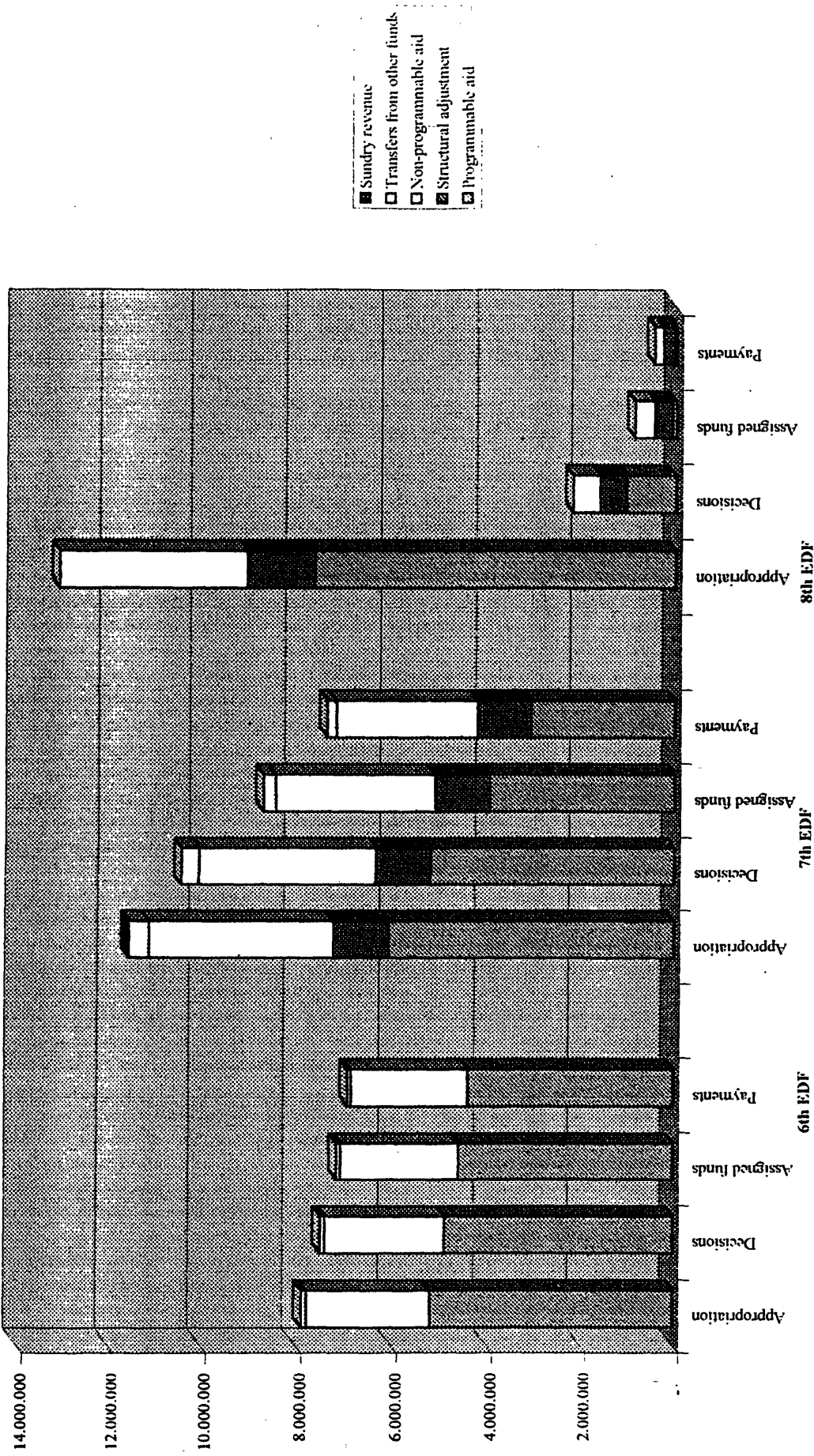


EDF CONSOLIDATED ACCOUNTS AT 31.12.1998:
NATURE OF AID (ECU '000)

	6th EDF	% (1)	7th EDF	% (1)	8th EDF	% (1)	TOTAL	% (1)
PROGRAMMABLE AID (NIP)								
Appropriation	5.179.574		6.083.352		7.677.000		18.939.926	
Decisions	4.883.765	94	5.202.523	86	1.064.898	14	11.151.187	59
Assigned funds	4.590.246	89	3.979.771	65	87.568	1	8.557.585	46
Payments	4.402.520	85	3.110.390	51	45.316	1	7.558.226	40
STRUCTURAL ADJUSTMENT (SAF)								
Appropriation	6.000		1.156.000		1.400.000		2.562.000	
Decisions	6.000	100	1.152.991	100	578.720	41	1.737.711	68
Assigned funds	5.995	100	1.142.850	99	385.567	28	1.534.412	60
Payments	5.407	90	1.130.977	98	239.460	17	1.375.844	54
NON-PROGRAMMABLE AID								
Appropriation	2.586.956		3.892.152		4.074.118		10.553.226	
Decisions	2.505.747	97	3.708.676	95	580.478	14	6.794.901	64
Assigned funds	2.478.813	96	3.340.660	86	420.832	10	6.240.304	59
Payments	2.443.505	94	2.959.169	76	181.845	4	5.584.520	53
TRANSFERS FROM OTHER FUNDS								
Appropriation	110.084		437.651				547.735	
Decisions	93.479	85	371.145	85			464.624	85
Assigned funds	85.926	78	254.940	58			340.866	62
Payments	80.081	73	193.583	44			273.664	50
SUNDRY REVENUE								
	-		13.830				13.830	
TOTAL								
Appropriation	7.882.614		11.582.985		13.151.118		32.616.717	
Decisions	7.488.991	95	10.435.334	90	2.224.097	17	20.148.422	62
Assigned funds	7.160.980	91	8.718.221	75	893.967	7	16.773.168	51
Payments	6.931.514	88	7.394.120	64	466.621	4	14.792.254	45

(1) % of appropriations.

EDF CONSOLIDATED ACCOUNTS as at 31 DEC 1998: nature of aid (ECU '000s)



BREAKDOWN BY INSTRUMENT (ECU million)

ACP + OCT - 6th EDF

	APPROPRIATION (1)		DECISIONS		ASSIGNED FUNDS		PAYMENTS	
	AGG. TOTAL (2)	ANNUAL (2) : (1)	AGG. TOTAL (3)	ANNUAL (3) : (2)	AGG. TOTAL (4)	ANNUAL (4) : (3)		
ACP								
Total indicative programmes	5.102,69	-36,43	4.528,98	52,21	4.343,67	118,47	96%	
Grants	4.637,74	2,58	4.085,67	63,61	3.919,43	113,00	96%	
Special loans	464,95	-39,01	443,31	-11,41	424,24	5,47	96%	
Structural adjustment	6,00	6,00	6,00	100%	5,41	90%		
Total non-programmable aid	2.563,84	-3,21	2.456,28	5,41	2.420,98	23,50	99%	
Interest-rate subsidies	81,66	81,66	81,66	100%	81,66	100%		
Emergency aid	179,43	0,04	179,43	0,04	179,43	-0,01	100%	
Aid for refugees	95,57	-1,29	94,85	-0,05	94,72	-0,08	100%	
Risk capital	600,00	-1,96	519,92	-2,96	510,19	14,71	98%	
Stabex	1.448,88	1.447,12	1.447,12	100%	1.447,12	100%		
Sysmin	158,30	158,30	133,30	83,8	107,85	8,87	81%	
Transfer 4th EDF - 6th EDF	106,56	-0,18	84,17	3,09	78,56	9,76	93%	
TOTAL ACP (a)	7.779,09	-39,81	7.075,42	60,70	6.848,61	151,72	97%	
OCT								
Total indicative programmes	76,88	-4,46	61,27	0,95	58,85	1,70	96%	
Grants	61,00	0,22	46,08	0,95	43,83	1,70	95%	
Special loans	15,88	-4,68	15,18	100%	15,03	99%		
Total non-programmable aid	23,12	-0,38	22,53	-0,38	22,53	100%		
Interest-rate subsidies	2,61	2,61	2,61	100%	2,61	100%		
Emergency aid	0,51	0,51	0,51	100%	0,51	100%		
Aid for refugees	15,00	-0,38	14,63	-0,38	14,63	100%		
Risk capital	4,00	4,00	4,00	100%	4,00	100%		
Stabex	1,00	1,00	0,79	79%	0,79	100%		
Sysmin	3,52	0,00	1,76	0,00	1,53	0,45	87%	
Transfer 4th EDF - 6th EDF	103,52	-4,84	85,56	0,57	82,91	2,15	97%	
TOTAL OCT (b)	7.882,61	-4,65	7.160,98	61,28	6.931,51	153,87	97%	
TOTAL (a) + (b)								

EDF CONSOLIDATED ACCOUNTS AT 31.12.1998 :
BREAKDOWN BY INSTRUMENT (ECU million)

ACP + OCT - 7th EDF

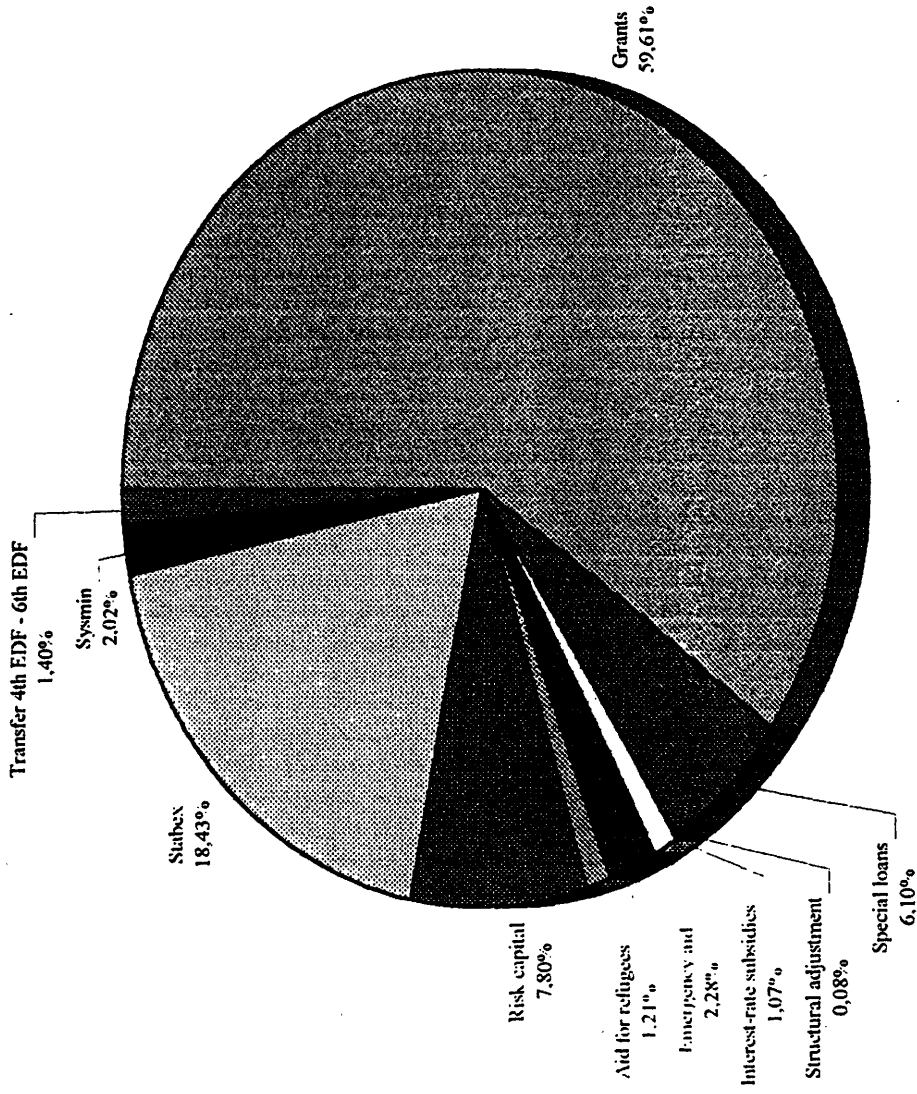
	APPROPRIATIONS		DECISIONS		ASSIGNED FUNDS		PAYMENTS	
	(1)	AGG. TOTAL ANNUAL (2)	% (2) : (1)	AGG. TOTAL ANNUAL (3)	% (3) : (2)	AGG. TOTAL ANNUAL (4)	% (4) : (3)	
ACP								
Total indicative programmes	5,985,85	5,126,41	86%	3,921,11	490,81	3,065,23	592,86	78%
Grants	5,985,85	5,126,41	86%	3,921,11	490,81	3,065,23	592,86	78%
Structural adjustment	1,156,00	1,152,99	100%	1,142,85	30,20	1,130,98	40,07	99%
Total non-programmable aid	3,849,65	3,669,27	95%	3,303,75	-1,46	2,932,59	143,97	89%
Interest-rate subsidies	280,00	245,59	88%	245,59	2,72	170,22	26,48	69%
Emergency aid	412,00	407,00	99%	404,16	3,14	398,15	4,41	99%
Aid for refugees	88,00	87,53	99%	83,66	1,81	79,05	5,40	94%
Risk capital	825,00	773,42	94%	767,61	8,20	549,95	131,87	72%
Stabex	1,724,65	1,697,35	98%	1,562,83	-60,46	1,561,55	-61,74	100%
Sysmin	480,00	453,78	95%	235,30	38,55	169,08	32,96	72%
Heavily indebted poor countries	40,00	4,59	11%	4,59	4,59	4,59	4,59	100%
Transfer 5th EDF - 7th EDF	422,85	359,52	85%	248,44	31,44	188,40	31,42	76%
TOTAL ACP (a)	11,414,35	10,308,19	90%	8,616,14	550,99	7,317,20	808,32	85%
OCT								
Total indicative programmes	97,50	76,11	78%	58,66	11,00	45,17	6,43	77%
Grants	97,50	76,11	78%	58,66	11,00	45,17	6,43	77%
Total non-programmable aid	42,50	39,41	93%	36,91	1,03	26,58	3,73	72%
Interest-rate subsidies	6,00	4,90	82%	4,90	-0,53	3,90	0,57	80%
Emergency aid	2,50	2,31	92%	2,28	0,48	2,16	1,26	94%
Aid for refugees	0,50	0,29	59%	0,29	0,20	0,29	0,20	90%
Risk capital	25,00	23,41	94%	23,41	0,88	14,20	1,70	61%
Stabex	6,00	6,00	100%	6,00	6,00	6,00	6,00	100%
Sysmin	2,50	2,50	100%	0,02	0,02	0,02	0,02	100%
Transfer 5th EDF - 7th EDF	14,80	11,62	79%	6,50	0,42	5,18	0,65	80%
TOTAL OCT (b)	154,80	127,14	82%	102,08	12,45	76,92	10,81	75%
SUNDRY REVENUE (c)	13,83							
TOTAL (a) + (b) + (c)	11,582,98	10,435,34	90%	8,718,22	563,44	7,394,12	819,13	85%

EDF CONSOLIDATED ACCOUNTS AT 31.12.1998 :
BREAKDOWN BY INSTRUMENT (ECU million)

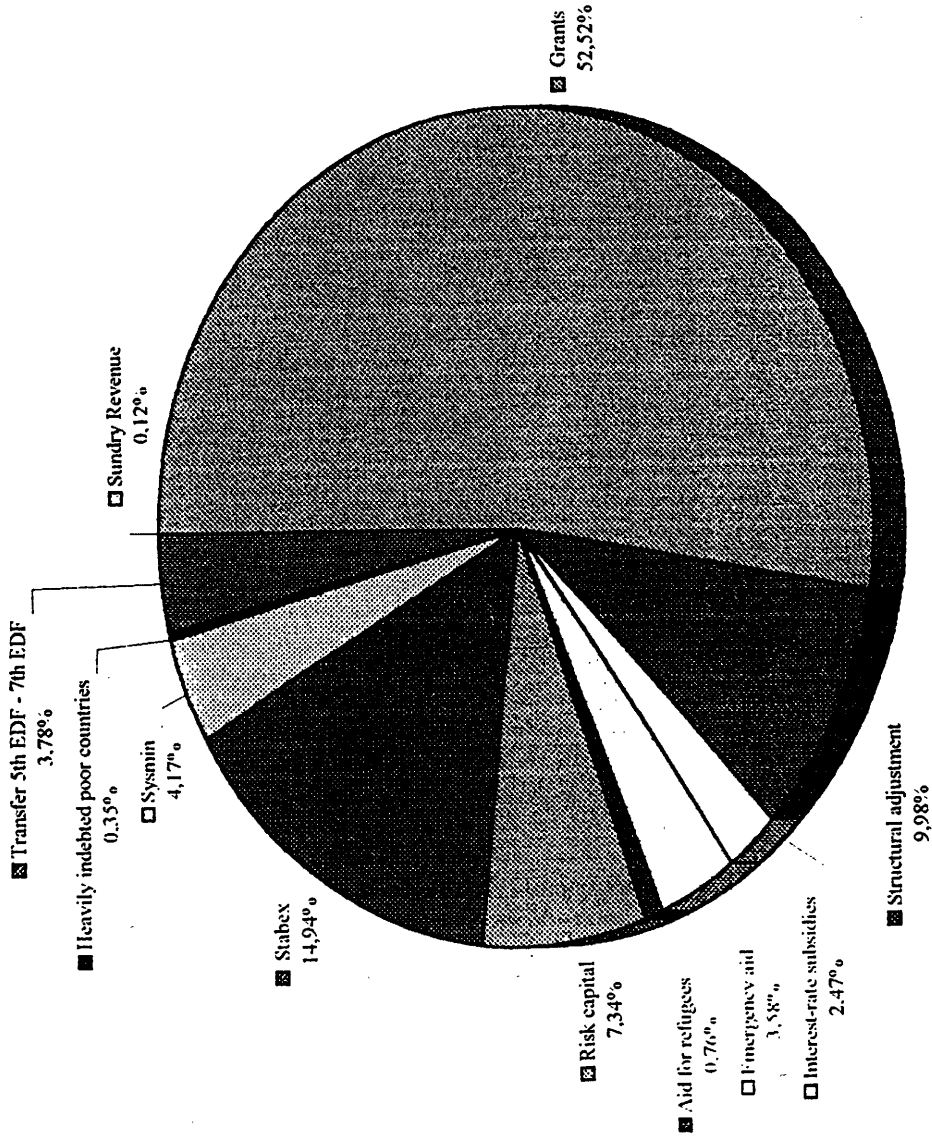
ACP + OCT - 8th EDF

	APPROPRIATIONS		DECISIONS		ASSIGNED FUNDS		PAYMENTS	
	(1)	AGG. TOTAL ANNUAL (2)	% (2) : (1)	AGG. TOTAL ANNUAL (3)	% (3) : (2)	AGG. TOTAL ANNUAL (4)	% (4) : (3)	
ACP								
Total indicative programmes	7.562,00	1.064,90	14%	87,57	8%	45,32	52%	
Grants	7.562,00	1.064,90	14%	87,57	8%	45,32	52%	
Structural adjustment	1.400,00	578,72	41%	385,57	67%	239,46	62%	
Total non-programmable aid	4.024,12	579,18	14%	420,83	73%	181,85	43%	
Interest-rate subsidies	370,00	22,82	6%	12,75	56%		-	
Emergency aid	140,00	33,22	24%	31,24	94%	6,99	22%	
Aid for refugees	120,00	0,22	0%		-		-	
Risk capital	1.000,00	290,15	29%	206,85	71%	23,05	11%	
Stabex	1.813,62	227,13	13%	167,25	74%	151,05	90%	
Sysmin	575,00	0,15	0%		-		-	
Utilisation of interest income	5,50	5,50	100%	2,75	50%	0,75	27%	
TOTAL ACP (a)	12.986,12	2.222,79	17%	893,97	40%	466,62	52%	
OCT								
Total indicative programmes	115,00	0,00	0%	0,00	-	0,00	-	
Grants	115,00		0%		-		-	
Total non-programmable aid	50,00	1,30	3%	0,00	-	0,00	-	
Interest-rate subsidies	8,50		0%		-		-	
Emergency aid	3,00		0%		-		-	
Aid for refugees	0,50		0%		-		-	
Risk capital	30,00	0,50	2%		-		-	
Stabex	5,50	0,80	15%		-		-	
Sysmin	2,50		0%		-		-	
TOTAL OCT (b)	165,00	1,30	1%	0,00	-	0,00	-	
TOTAL (a) + (b)	13.151,12	2.224,10	17%	893,97	40%	466,62	52%	

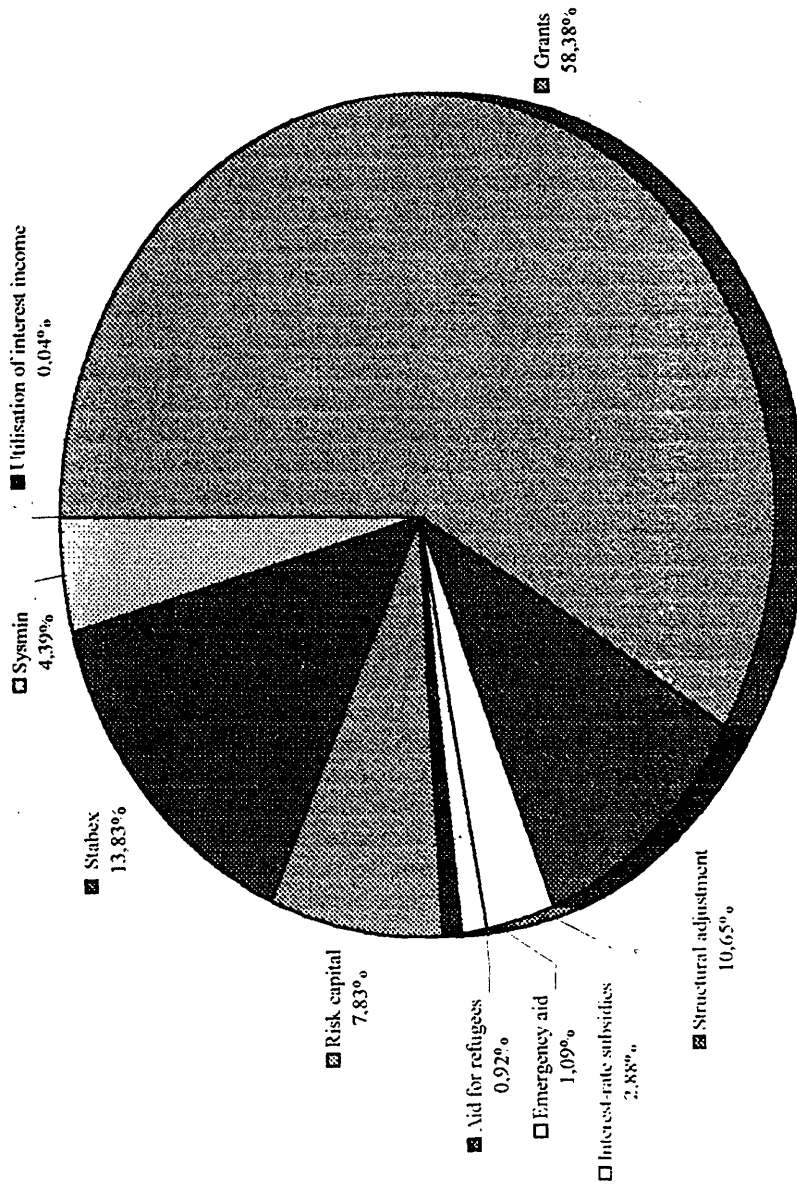
6th EDF Appropriations



7th EDF Appropriations



8th EDF Appropriations



2. SITUATION BY COUNTRY AND BY INSTRUMENT

2.1 6th EDF

Notes to the management accounts:

- (a) In tables 1 to 8, the figure "0.0" indicates that the corresponding amount is between ECU -50 000 and ECU 50 000.

Where no figure is given, the amount is equal to zero.

- (b) In all tables the heading "All countries" refers to projects which cover a number of countries but are not financed by regional cooperation.

- (c) In all tables the heading "Financial and administrative expenses" represents projects financed by EDF interest which have been transferred to a financial instrument (grants, Structural Adjustment Facility) with the exception of one amount of ECU 1 million financed from the "grants" appropriation and used for posting bank charges and exchange rate differences.

- (d) In the first column of tables 1 and 2, the allocation for "Regional cooperation" (ECU 912.2 million) corresponds to the Commission's regional cooperation target for ACP States only (see Chapter II, point 2.1).

- (e) In tables 1 and 2, the heading "Reserve" (ECU 5.9 million) corresponds to unallocated grants. These grants come from the unexpended balances of the following instruments:

Interest-rate subsidies:	ECU 4.3 million
Aid for refugees:	ECU 1.6 million
	<hr/>
	ECU 5.9 million

2.2 7th EDF

Notes to the management accounts:

- (a) In tables 1 to 8, the figure "0.0" indicates that the corresponding amount is between ECU -50 000 and ECU 50 000.

Where no figure is given, the amount is equal to zero.

- (b) In all tables the heading "All countries" refers to projects which cover a number of countries but are not financed by regional cooperation.
- (c) In all tables the heading "Financial and administrative expenses" represents projects financed by EDF interest which have been transferred to a financial instrument (grants, Structural Adjustment Facility).
- (d) In the first column of tables 1 and 2, the allocation for "Regional Cooperation" (ECU 1 192.9 million) is composed of the Commission's regional cooperation target (ACP States only) of ECU 1 125 million (see Chapter II, point 2.2.) plus the target overrun (i.e. ECU 67.9 million).
- (e) In tables 1 and 2, the heading "Reserve" (ECU 14.1 million) represents unallocated grants still available.

2.3 8th EDF

Notes to the management accounts:

- (a) In tables 1 to 8, the figure "0.0" indicates that the corresponding amount is between ECU -50 000 and ECU 50 000.

Where no figure is given, the amount is equal to zero.

- (b) In all tables the heading "All countries" refers to projects which cover a number of countries but are not financed by regional cooperation.
- (c) In all tables the heading "Financial and administrative expenses" represents projects financed by EDF interest which have been transferred to a financial instrument (grants, Structural Adjustment Facility)
- (d) In the first column of tables 1 and 2, the allocation for "Regional Cooperation" (ECU 1 300.0 million) is the Commission's regional cooperation target (ACP States only)
- (e) In tables 1 and 2, the heading "Reserve" (ECU 1 727.1 million) covers two separate items:
- a figure of ECU 548.0 million reserved for the NIP of 5 countries (Burundi, Congo, Eritrea, Rwanda and Sierra Leone) where aid has been suspended, or is blocked for political or administrative reasons;
 - ECU 1 179.1 million representing other unallocated grants.

6th EDF RESULT BY STATE (MECU)												2.1 Table 1			
State	NATIONAL INDICATIVE PROGRAMME						NON NIP				TOTAL Delegated				
	NIP		Decisions		Delegated Appropriations		Payments		Decisions		Payments		Decisions	Delegated Appropriations	Payments
	Mecu	% NIP	Mecu	% NIP	Mecu	% NIP	Mecu	% NIP	Mecu	% NIP	Mecu	% NIP	Mecu	Mecu	Mecu
ANGOLA	102.0	101.9	99.9%	89.6	86.5	84.8%	18.8	18.4%	18.8	18.4%	120.7	108.3	105.3		
BENIN	89.5	86.6	96.8%	85.8	84.7	94.6%	34.1	38.1%	34.1	38.1%	120.7	119.9	118.8		
BURKINA FASO	107.5	107.5	100.0%	105.2	103.3	96.1%	27.0	25.1%	23.8	22.1%	134.5	132.2	127.1		
BOTSWANA	30.5	27.7	90.7%	27.1	24.3	79.7%	29.9	97.9%	29.3	95.9%	57.5	56.5	53.6		
BURUNDI	108.0	103.1	95.4%	93.6	93.5	86.6%	56.2	52.0%	56.2	52.0%	159.3	149.8	149.8		
CENTRAL AFRICA REPUBLIC	69.5	68.6	98.7%	67.3	66.3	95.4%	40.4	58.2%	38.2	55.0%	109.0	107.7	105.1		
CHAD	89.0	88.4	99.3%	84.3	83.1	93.4%	49.7	55.9%	48.5	54.4%	138.1	132.8	131.6		
CAMEROON	101.0	100.5	99.5%	99.6	97.9	96.9%	203.4	201.4%	203.2	201.2%	303.9	302.8	301.1		
CONGO	48.0	47.8	99.6%	39.1	35.8	74.5%	11.9	24.7%	11.6	24.3%	59.7	51.0	47.4		
COMOROS	20.5	20.5	99.8%	20.3	20.2	98.6%	12.0	58.5%	12.0	58.4%	32.4	32.3	32.2		
CAPE VERDE	24.5	24.4	99.5%	24.4	23.8	97.2%	3.3	13.5%	3.3	13.3%	27.7	27.7	27.1		
DJIBOUTI	16.0	15.8	98.9%	15.4	13.4	83.8%	2.3	14.3%	2.3	14.2%	18.1	17.6	15.7		
EQUATORIAL GUINEA	12.0	11.3	94.2%	11.3	9.9	82.3%	13.8	115.3%	13.8	115.3%	25.1	25.1	23.7		
ETHIOPIA	210.0	209.9	100.0%	171.2	163.2	77.7%	187.1	89.1%	182.8	87.0%	397.0	358.3	346.0		
GABON	26.0	24.5	94.2%	23.8	23.6	90.6%	3.5	13.5%	3.5	13.4%	28.0	27.3	27.1		
GHANA	97.5	97.3	99.8%	94.8	77.7	79.7%	25.2	25.9%	25.2	25.9%	122.5	120.0	102.9		
GAMBIA	21.0	21.0	99.9%	20.7	19.4	92.5%	19.8	94.4%	19.8	94.3%	40.8	40.5	39.2		
GUINEA BISSAU	37.5	37.5	99.9%	36.4	35.1	93.7%	6.8	18.2%	6.8	17.7%	44.3	43.2	41.8		
GUINEA	114.0	112.8	98.9%	110.7	109.5	96.1%	77.2	67.8%	67.4	59.1%	190.0	186.6	176.9		
IVORY COAST	82.0	82.0	100.0%	81.7	81.1	98.8%	383.4	467.6%	383.2	467.3%	465.4	465.0	464.2		
KENYA	135.0	115.5	85.6%	105.0	101.0	74.8%	90.5	67.0%	89.2	65.9%	206.0	195.1	190.0		
LIBERIA	45.0	45.0	100.0%	39.9	30.6	68.0%	9.1	20.1%	8.5	19.0%	54.1	48.5	39.1		
LESOTHO	41.5	41.2	99.3%	40.9	40.1	96.7%	10.4	25.0%	10.2	24.5%	51.6	51.3	50.3		
MADAGASCAR	125.0	124.0	99.2%	113.0	99.6	79.7%	38.4	30.7%	36.2	28.8%	162.4	149.3	135.6		
MALAWI	114.5	113.1	98.8%	109.5	106.9	93.3%	53.3	46.6%	52.9	46.2%	166.5	162.7	159.8		
MAURITIUS	31.0	30.8	99.5%	29.8	29.3	94.6%	12.2	39.5%	12.2	39.4%	43.1	42.1	41.5		
MAURITANIA	61.5	61.1	99.4%	60.8	57.5	93.4%	42.4	69.0%	42.3	68.8%	103.6	103.2	99.8		
MALI	137.0	135.0	98.5%	126.8	126.5	92.4%	38.5	28.1%	35.3	27.9%	173.5	165.3	164.8		
MOZAMBIQUE	160.0	158.0	98.7%	145.3	140.6	87.9%	61.9	38.7%	57.9	35.7%	219.9	207.2	202.5		
NIGER	122.0	121.6	99.6%	107.8	102.2	83.8%	38.0	31.1%	37.7	30.9%	159.5	145.6	139.9		
RWANDA	110.0	91.3	83.0%	85.8	82.2	74.7%	70.9	64.5%	70.9	64.5%	162.2	156.7	153.1		
SENEGAL	108.5	108.5	100.0%	108.2	105.4	97.2%	163.9	151.1%	161.3	139.4%	272.4	268.2	256.7		
SEYCHELLES	6.2	6.2	99.6%	6.2	6.2	99.4%	1.7	27.3%	1.7	27.2%	7.9	7.9	7.9		
SIERRA LEONE	65.5	63.7	97.3%	62.5	62.2	95.0%	9.7	14.8%	9.7	14.6%	73.4	72.2	71.8		
SOMALIA	159.3	142.5	89.5%	135.6	115.8	72.7%	30.7	19.3%	30.7	19.9%	173.3	166.3	145.8		
SAO TOME & PRINCIPE	6.0	5.9	99.1%	5.9	5.9	98.1%	4.0	67.0%	4.0	67.0%	10.0	10.0	9.9		
SUDAN	145.0	80.1	55.3%	69.3	68.5	47.2%	147.6	101.8%	145.7	101.2%	227.7	216.3	215.2		
SWAZILAND	25.5	25.3	99.2%	25.0	24.4	95.7%	9.4	36.9%	9.4	36.8%	34.7	34.4	33.8		
TANZANIA	176.5	161.7	91.6%	161.0	160.6	91.0%	23.4	13.3%	23.4	13.3%	185.1	184.4	184.1		
TOGO	61.5	49.6	80.6%	49.3	49.2	80.0%	49.6	80.6%	33.9	55.1%	99.2	83.2	83.1		
UGANDA	133.0	127.4	95.8%	126.2	125.9	94.6%	26.3	19.8%	26.2	19.7%	153.8	152.5	152.1		
NIGERIA	213.5	182.6	85.5%	178.6	177.2	83.0%	17.7	8.3%	17.8	8.3%	200.3	196.2	194.8		
ZAMBIA	92.0	90.1	97.9%	88.1	87.7	95.3%	14.4	15.6%	14.2	15.6%	104.4	102.4	102.0		
ZIMBABWE	77.0	74.9	97.3%	71.4	70.0	90.9%	12.7	16.5%	12.7	16.5%	87.7	84.2	82.8		
DEMOCRATIC REPUBLIC OF CONGO	166.5	140.3	84.2%	119.3	105.4	63.3%	8.3	5.0%	8.3	5.0%	148.6	127.5	113.7		
* TOTAL AFRICA	3,924.5	3,884.4	98.9%	3,473.4	3,333.3	84.9%	2,191.2	55.8%	2,133.3	54.4%	5,875.7	5,637.3	5,466.5		
ANTIGUA-BARBUDA	4.5	4.4	97.7%	4.4	4.3	94.6%	1.5	33.3%	1.5	33.3%	5.9	5.9	5.8		
ARUBA	5.0	5.0	100.0%	2.9	2.7	53.5%	2.2	43.1%	2.1	41.8%	7.2	5.0	4.8		
BELIZE	8.0	8.0	100.0%	8.0	8.0	99.7%	5.0	62.1%	5.0	62.1%	13.0	13.0	12.9		
BAHAMAS	4.0	3.3	82.3%	3.3	3.3	82.3%	2.7	66.3%	2.7	66.3%	5.9	5.9	5.9		
DOMINICA	6.0	6.0	100.0%	5.8	5.7	95.8%	5.0	83.9%	5.0	83.9%	11.0	10.9	10.8		
GRENADA	5.5	5.5	99.8%	5.5	5.4	98.9%	5.3	95.7%	5.3	95.7%	10.8	10.7	10.7		
GUYANA	22.1	21.8	98.5%	21.8	21.6	97.9%	3.9	17.7%	3.9	17.7%	25.7	25.7	25.5		
JAMAICA	40.2	40.0	99.4%	39.8	35.9	89.3%	11.4	28.4%	11.4	28.4%	51.4	51.2	47.3		
ST CHRISTOPHER NEVIS	3.5	3.1	88.1%	3.1	3.1	88.1%	1.5	42.9%	1.5	42.9%	4.6	4.6	4.6		
SAINT LUCIA	6.0	6.0	99.5%	5.1	5.1	85.0%	3.0	49.3%	3.0	49.3%	8.9	8.1	8.1		
SURINAM	24.0	15.8	66.0%	15.8	15.8	66.0%	3.9	16.2%	3.9	16.2%	19.7	19.7	19.7		
SINT VINCENT & GRENADINES	7.0	6.9	98.6%	6.7	6.7	95.6%	3.2	46.1%	3.2	46.1%	10.1	10.0	9.9		
TRINIDAD & TOBAGO	15.0	14.5	96.8%	12.9	6.2	41.3%	11.5	76.8%	11.5	74.2%	26.0	24.1	17.3		
* TOTAL CARIBBEAN	150.8	140.2	93.0%	135.1	123.8	82.1%	60.0	39.8%	59.5	38.5%	200.2	194.7	183.4		
FUJI	20.0	18.0	90.1%	17.7	17.3	86.3%	4.1	20.7%	4.1	20.7%	22.2	21.9	21.4		
KIRIBATI	6.5	6.5	99.4%	6.4	6.1	94.0%	2.8	42.3%	2.8	42.3%	9.2	9.2	8.9		
PAPUA-NEW GUINEA	34.5	33.6	97.4%	33.6	33.0	95.5%	148.8	431.3%	148.8	391.3%	182.4	177.7	168.0		
SALOMON ISLANDS	17.0	15.3	89.9%	15.0	14.7	86.5%	33.8	198.9%	33.8	198.9%	49.1	48.8	48.5		
TONGA	6.5	6.5	100.0%	6.2	5.4	83.3%	6.3	96.2%	6.3	96.2%	12.8	12.4	11.7		
TUVALU	2.0	2.0	99.8%	1.6	1.6	79.3%	0.6	32.0%	0.6	32.0%	2.6	2.3	2.2		
VANUATU	6.7	6.5	98.1%	6.4	6.3	94.1%	21.0	312.9%	21.0	298.0%	27.5	26.4	26.3		
WESTERN SAMOA	9.0	9.0	99.6%	8.7	8.7	96.3%	15.6	173.3%	15.6	173.3%	24.6	24.3	24.3		
* TOTAL PACIFIC	102.2	97.4	95.3%	95.8	93.0	91.0%	233.0	228.0%	232.2	213.5%	330.4	322.8	311.2		
ALL COUNTRIES	20.1	20.1	100.0%	20.1	20.1	100.0%	20.1	20.1	20.1	20.1	20.1	20.1	20.1		
REGIONAL COOPERATION	91.2	89.8	97.5%	81.7	78.3	86.3%	70.4	7.7%	68.4	7.5%	96.2	87.4	85.7		
FINANCIAL & ADMIN. EXPENSES	7.2	7.2	100.0%	7.1	6.3	87.5%	6.0	83.3%	6.0	75.4%	13.2	13.1	11.7		
RESERVE	5.9	5.9	100.0%	5.9	5.9	100.0%	5.9	5.9	5.9	5.9	5.9	5.9	5.9		
* TOTAL ACP	5,102.7	4,819.1	94.4%	4,529.0	4,343.7	85.1%	2,580.7	50.8%	2,504.3	49.1%	7,399.8	7,075.4	6,844.8		
* TOTAL OCT	78.9	64.7	84.2%	61.3	58.9	78.5%	24.5	31.9%	24.5	31.3%	89.2	85.6	82.9		
* TOTAL ACP + OCT	5,179.8	4,883.8	94.3%	4,590.2	4,402.5	85.0%	2,605.2	50.3%	2,528.8	48.8%	7,489.0	7,161.0	6,927.7		

6th EDF RESULT BY STATE (MECU)

2,1 Table 2

State	NATIONAL INDICATIVE PROGRAMME						NON NIP				TOTAL Delegated				
	NIP		Decisions		Delegated Appropriations		Payments		Decisions		Payments		Decisions	Delegated Appropriations	Payments
	Mecu	Mecu	% NIP	Mecu	Mecu	% NIP	Mecu	% NIP	Mecu	% NIP	Mecu	Mecu	Mecu	Mecu	Mecu
ANGOLA	102.0	0.5	0.5%	0.7	0.9	0.9%						0.5	0.7	0.9	
BENIN	89.5	2.3	-2.5%	0.5	0.3	0.3%	-0.4		0.2			-2.7	0.3	0.5	
BURKINA FASO	107.5		0.0%	2.1	7.1	6.6%			2.5			0.0	-2.1	9.6	
BOTSWANA	30.5	0.4	1.3%	1.9	1.8	6.0%			0.0			0.4	2.1	1.8	
BURUNDI	108.0	4.1	-3.8%	-0.2	0.1	0.1%	-0.1					-4.2	0.2	0.1	
CENTRAL AFRICA REPUBLIC	69.5		0.0%	0.2	1.4	2.0%			1.1			0.0	0.3	2.4	
CHAD	89.0	0.6	-0.7%	-0.6	1.5	1.7%	-0.1		0.0			-0.7	0.7	1.5	
CAMEROON	101.0	0.2	0.2%	0.3	1.5	1.5%			0.6			0.2	0.1	1.5	
CONGO	48.0	0.1	-0.1%	-0.1	0.3	0.5%			0.1			-0.1	0.1	0.4	
COMOROS	20.5	0.0	-0.2%	0.0	0.0	0.1%	-0.0					0.0	0.0	0.0	
CAPE VERDE	24.5	0.1	-0.4%	0.7	0.3	1.4%						-0.1	0.7	0.3	
DJIBOUTI	16.0	0.2	-1.0%	0.7	0.0	0.1%						-0.2	0.7	0.0	
EQUATORIAL GUINEA	12.0	0.5	-3.9%	0.2	1.4	11.4%						-0.5	0.2	1.4	
ETHIOPIA	210.0		0.0%	-1.3	4.5	2.1%	-0.0		0.5			0.0	1.3	5.0	
GABON	26.0		0.0%	-0.1	0.2	0.7%						0.0	0.1	0.2	
GHANA	97.5	0.2	0.2%	0.7	9.7	9.9%	-1.0					-0.8	0.3	9.7	
GAMBIA	21.0	1.0	4.8%	1.0	0.1	0.4%						1.0	1.0	0.1	
GUINEA BISSAU	37.5	0.0	0.0%	0.3	1.8	4.7%	0.2		0.2			0.2	0.5	1.9	
GUINEA	114.0	0.2	-0.2%	-0.0	1.7	1.5%			12.1			-0.2	0.1	13.9	
IVORY COAST	82.0	0.0	0.0%	1.7	2.6	3.1%			1.0			0.0	2.7	3.6	
KENYA	135.0	2.1	-1.6%	3.0	2.9	2.2%			0.1			-2.1	4.0	3.0	
LIBERIA	45.0	19.6	43.7%	14.8	10.1	22.5%	0.2					19.8	14.8	10.1	
LESOTHO	41.5	0.2	-0.5%	0.3	0.1	0.3%			0.2			-0.2	0.7	0.4	
MADAGASCAR	125.0	2.5	2.0%	11.6	13.6	10.9%	1.8		0.3			4.3	11.6	13.9	
MALAWI	114.5	0.0	0.0%	1.4	0.9	0.8%	-0.1		0.1			-0.1	1.4	1.0	
MAURITIUS	31.0		0.0%	0.1	0.8	2.7%			0.0			0.0	0.1	0.9	
MAURITANIA	61.5	0.0	0.0%	0.4	0.4	0.6%			0.9			0.0	0.4	1.3	
MALI	137.0		0.0%	-0.8	0.1	0.0%			0.0			0.0	0.5	0.1	
MOZAMBIQUE	160.0	0.0	0.0%	5.7	3.5	2.2%						0.0	5.7	3.5	
NIGER	122.0	0.1	0.1%	3.2	3.1	2.6%	-0.1					0.0	3.3	3.1	
RWANDA	110.0	15.7	-14.3%	-15.9	0.3	0.3%	-2.5					-18.2	18.4	0.3	
SENEGAL	108.5		0.0%	-0.2	1.0	0.9%			5.0			0.0	8.0	6.0	
SEYCHELLES	6.2	0.0	0.1%	0.0	0.0	0.7%						0.0	0.0	0.0	
SIERRA LEONE	65.5	0.0	0.0%	0.2	0.1	0.2%	-0.1		0.1			-0.1	0.2	0.2	
SOMALIA	159.3	0.2	-0.1%	4.9	8.5	5.3%	-0.6		0.5			-0.8	4.8	9.3	
SAO TOME & PRINCIPE	6.0	0.0	-0.4%	0.1	0.1	2.0%						0.0	0.1	0.1	
SUDAN	145.0		0.0%	-0.2	0.0	0.0%			0.0			0.0	0.1	0.0	
SWAZILAND	25.5	0.3	1.3%	0.4	0.9	3.4%	0.1		0.1			0.4	0.5	0.9	
TANZANIA	176.5	1.5	-0.9%	-0.3	0.4	0.2%	-0.3					-1.8	0.6	0.4	
TOGO	61.5	4.4	-7.1%	-0.3	0.1	0.1%	0.0		0.1			-4.4	0.3	0.1	
UGANDA	133.0	0.1	-0.1%	0.1	0.5	0.4%	-0.3					-0.4	0.1	0.5	
NIGERIA	213.5	28.2	-13.2%	-2.5	0.2	0.1%						-28.2	2.5	0.2	
ZAMBIA	92.0	1.3	1.4%	0.1	0.2	0.3%			0.1			1.3	0.0	0.3	
ZIMBABWE	77.0	1.9	-2.4%	-1.7	1.3	1.7%						-1.9	1.7	1.3	
DEMOCRATIC REPUBLIC OF CONGO	166.5	2.2	-1.3%	0.5	0.0	0.0%	-0.0		2.9			-2.2	2.8	2.9	
* TOTAL AFRICA	3,024.5	38.5	-1.0%	33.4	86.2	2.2%	-3.3		28.5			-41.8	43.0	114.8	
ANTIGUA-BARBUDA	4.5		0.0%	0.0	0.4	10.0%						0.0	0.1	0.4	
AROUND	5.0		0.0%	0.0	0.0	0.1%						0.0	0.1	0.0	
B. E.	8.0		0.0%	-0.0	0.1	1.3%			0.0			0.0	0.0	0.1	
BAHAMAS	4.0	0.5	-12.8%	-0.5		0.0%						-0.5	0.5	0.0	
DOMINICA	6.0	0.1	1.5%	0.1		0.0%	0.0		0.0			0.1	0.1	0.0	
GRENADA	5.5	0.0	0.0%	-0.0	0.0	0.5%	0.0		0.0			0.0	0.0	0.0	
GUYANA	22.1	0.1	-0.4%	0.1	0.2	1.0%						-0.1	0.1	0.2	
JAMAICA	40.2	0.0	0.1%	0.0	0.8	2.1%	-0.1		-0.0			0.0	0.0	0.8	
ST CHRISTOPHER NEVIS	3.5		0.0%			0.0%						0.0		0.0	
SAINT LUCIA	6.0		0.0%			0.0%						0.0		0.0	
SURINAM	24.0	1.5	-6.4%	0.0	0.0	0.0%	-0.8					-2.3	0.5	0.0	
SINT VINCENT & GRENADINES	7.0		0.0%	0.1	0.1	0.9%						0.0	0.1	0.1	
TRINIDAD & TOBAGO	15.0	0.5	-3.2%	0.4	0.3	1.8%	-0.2		0.1			-0.7	0.2	0.5	
* TOTAL CARIBBEAN	150.8	2.5	-1.7%	0.3	2.0	1.3%	-1.1		0.2			-3.6	0.4	2.3	
FIJI	20.0	0.9	-4.3%	-0.3	1.0	5.0%						-0.9	0.3	1.0	
KIRIBATI	6.5	0.0	-0.1%	-0.0	0.0	0.0%						0.0	0.0	0.0	
PAPUA-NEW GUINEA	34.5	0.3	-0.8%	-0.2	2.4	7.0%			2.9			-0.3	0.2	5.3	
SALOMON ISLANDS	17.0	0.1	-0.3%	-0.1	0.2	1.2%						-0.1	0.1	0.2	
TONGA	6.5		0.0%	0.6	0.4	6.7%						0.0	0.5	0.4	
TUVALU	2.0	0.0	-0.2%	-0.0	0.0	1.3%						0.0	0.0	0.0	
VANUATU	6.7	0.1	-1.9%	0.1	0.3	3.2%	1.0					0.9	0.1	0.3	
WESTERN SAMOA	9.0	0.2	3.2%	-0.0		0.0%						0.3	0.0	0.0	
* TOTAL PACIFIC	102.2	1.0	-1.0%	0.1	4.3	4.2%	1.0		2.8			0.0	0.1	7.3	
ALL COUNTRIES												0.0		0.0	
REGIONAL COOPERATION	912.2	5.5	0.6%	18.2	25.6	2.3%	-0.0		5.5			5.6	17.9	27.2	
FINANCIAL & ADMINIS. EXPENSES	7.2		0.0%	0.1	0.3	3.3%						0.0	0.1	0.3	
RESERVE	5.9														
* TOTAL ACP	5,102.7	36.4	-0.7%	52.2	118.5	2.3%	-3.4		32.3			-39.8	60.7	151.7	
* TOTAL OCT	78.9	4.5	-5.8%	0.9	1.7	2.2%	-0.4		3.5			-4.8	0.8	2.1	
* TOTAL ACP + OCT	5,179.6	40.9	-0.8%	53.2	120.2	2.3%	-3.8		35.7			-44.6	61.3	153.9	

6th EDF BY INSTRUMENT AND BY STATE (MECU)												2.1 Table 3		
CUMULATIVE YEAR 1998														
State	NIP			NON NIP								Total NON NIP	TOTAL	
	Grants	Special Loans	Total NIP	Interest Subsidies	Emergency Aid	Refugee Aid	Risk Capital	STABEX	SYSMIN	Transfers from other Funds	Structural Adjustment Facilities			
ANGOLA	101.9		101.9		13.7	2.6	2.5						18.8	120.7
BENIN	86.6		86.6		0.3	0.1	12.7	17.7			3.2		34.1	120.7
BURKINA FASO	107.5		107.5		0.4		12.7	7.3			6.6		27.0	134.5
BOTSWANA	22.2	5.5	27.7	2.6	0.4	0.4	4.0			21.0	0.8		29.9	57.5
BURUNDI	93.2	9.9	103.1		0.2	0.4	10.1	44.5			1.1		56.2	159.3
CENTRAL AFRICAN REPUBLIC	68.6		68.6		0.6		6.0	31.2			2.6		40.4	109.0
CHAD	88.1		88.4		1.2	1.8	3.5	40.4			2.8		49.7	138.1
CAMEROON	71.1	29.4	100.5		0.1		1.0	198.8			3.5		203.1	303.9
CONGO	37.9	19.0	56.9				11.5				0.3		11.9	68.8
COMOROS	20.5		20.5				2.0	9.6			0.4		12.0	32.4
CAPE VERDE	24.4		24.4				3.0				0.3		3.3	27.7
DJIBOUTI	15.8		15.8		0.2	1.1	0.9				0.1		2.3	18.1
EQUATORIAL GUINEA	11.3		11.3				4.0	9.8					13.8	25.1
ETHIOPIA	191.9	18.0	209.9		4.5	10.3	29.9	98.6			0.8		187.1	397.0
GABON	17.2	7.3	24.5		0.1			3.1			0.3		3.5	28.0
GHANA	97.3		97.3	3.2			22.0				0.0		25.2	122.5
GAMBIA	21.0		21.0		0.2		5.7	13.7			0.2		19.8	40.8
GUINEA BISSAU	37.5		37.5		0.1		3.1	2.9			0.5		6.8	44.3
GUINEA	107.8	5.0	112.8		1.1	2.3	38.0		35.0		0.9		77.2	190.0
IVORY COAST	60.7	21.3	82.0	11.8	0.9	1.1	0.1	365.3			4.0		383.1	465.1
KENYA	105.5	10.0	115.5	10.8	0.4	0.0	6.6	70.9			1.7		90.5	206.0
LIBERIA	45.0		45.0		6.7	1.8					0.5		9.1	54.1
LESOTHO	31.4	9.8	41.2				5.0	4.4			1.1		10.4	51.6
MADAGASCAR	111.0	12.5	123.5		0.3		30.4	4.5			3.3		38.4	161.9
MALAWI	107.3	5.8	113.1	1.7	4.1	13.2	11.7	21.7			0.9		53.3	166.5
MAURITIUS	20.9	10.0	30.8	3.2	0.7		5.8	3.0			0.2		12.2	43.1
MAURITANIA	61.1		61.1		0.7	1.5	21.5		18.0		0.7		42.4	103.6
MALI	130.0	5.0	135.0		0.8		14.8	20.3			2.7		38.5	173.5
MOZAMBIQUE	158.0		158.0		16.3	13.3	10.9	21.5					61.9	219.9
NIGER	116.6	5.0	121.6		0.4	2.7	14.3	6.6	12.5		1.5		38.0	159.5
RWANDA	91.3		91.3		1.6	0.2	7.2	61.9					70.9	162.2
SENEGAL	98.5	10.0	108.5		1.6	4.2	22.3	107.0	25.5		3.3		163.9	272.4
SEYCHELLES	6.2		6.2	0.2			1.5				0.0		1.7	7.9
SIERRA LEONE	58.8	4.9	63.7		0.4		7.5				1.8		9.7	73.4
SOMALIA	142.5		142.5		10.5	3.8	11.3				5.2		30.7	173.3
SAO TOME & PRINCIPE	5.9		5.9		0.1		2.3	1.6			0.0		4.0	10.0
SUDAN	80.1		80.1		40.7	20.7	21.7	63.9			0.6		147.6	227.7
SWAZILAND	20.4	4.9	25.3	0.7		1.3	7.0				0.3		9.4	34.7
TANZANIA	161.7		161.7		0.1		13.4	8.9			1.0		23.4	185.1
TOGO	47.2	2.4	49.6				7.5	25.5	15.0		0.8		49.6	99.2
UGANDA	127.4		127.4		2.5	5.9	15.6				2.3		26.3	153.8
NIGERIA	53.7	128.9	182.6	15.0	1.1		0.6				1.0		17.7	200.3
ZAMBIA	5.1	15.0	20.1		0.6	0.6	11.4				1.8		14.4	34.4
ZIMBABWE	44.9	30.0	74.9	10.5		1.3	0.9						12.7	87.6
DEMOCRATIC REPUBLIC OF CONGO	133.1	7.1	140.3	1.3	0.9	2.1					4.0		9.3	149.6
* TOTAL AFRICA	3318.7	387.7	3884.4	61.1	156.6	93.2	424.4	1284.5	128.3	63.2			2191.2	5875.7
ANTIGUA-BARBUDA	3.4	1.0	4.4				1.5						1.5	5.9
BARBADOS	3.0	2.0	5.0	1.1			0.4				0.7		2.2	7.2
BELIZE	5.0	3.0	8.0	0.1		1.8	0.9				2.1		5.0	13.0
BAHAMAS	2.6	0.7	3.3	2.6							0.1		2.7	5.9
DOMINICA	6.0		6.0				3.8	1.2			0.0		5.0	11.0
GRENADA	5.5		5.5		0.1		2.6	2.5			0.0		5.3	10.8
GUYANA	21.8		21.8		0.2		3.6				0.1		3.9	25.7
JAMAICA	30.9	10.0	40.9	5.4	0.8		2.1				3.2		11.4	51.4
ST CHRISTOPHER NEVIS	3.1		3.1				1.5						1.5	4.6
SAINT LUCIA	6.0		6.0	0.9			2.0				0.0		3.0	8.9
SURINAM	15.3	0.5	15.8		0.1		3.0				0.3		3.9	19.7
SAINT VINCENT & GRENADINES	6.9		6.9	0.6	0.1		2.6				0.0		3.2	10.1
TRINIDAD & TOBAGO	8.5	6.0	14.5	2.0	0.1		3.0				6.5		11.5	26.0
* TOTAL CARIBBEAN	117.0	23.3	140.2	12.6	1.4	1.8	26.9	3.7		13.5			60.0	200.2
FJI	13.1	4.9	18.0	2.1	0.3		1.2				0.3		4.1	22.2
KIRIBATI	6.5		6.5					2.5			0.3		2.8	9.3
PAPUA NEW GUINEA	20.1	13.5	33.6	4.6		0.6	3.5	110.0			0.1		148.8	182.4
SOLOMON ISLANDS	13.3	2.0	15.3		0.4		2.0	31.3			0.1		33.8	49.1
TONGA	6.5		6.5	0.2			1.7	4.3			0.0		6.3	12.8
TUVALU	2.0		2.0				0.5	0.1					0.6	2.6
VANUATU	6.6		6.6		0.5		1.0	19.3			0.1		21.0	27.5
WESTERN SAMOA	9.0		9.0		0.2		4.2	11.1			0.1		15.6	24.6
* TOTAL PACIFIC	77.0	20.4	97.4	7.0	1.5	0.6	14.1	178.9	30.0	1.0			233.0	330.4
ACP REGIONAL COOPERATION	836.2	53.6	889.8	1.0			55.5				13.8		70.4	960.2
* TOTAL REGIONAL COOPERATION A	836.2	53.6	889.8	1.0			55.5				13.8		70.4	960.2
ALL COUNTRIES ACP					19.9						0.2		20.1	20.1
FINANCIAL & ADMINIS. EXPENSES			7.2									6.0	6.0	13.2
* TOTAL ACP	4354.1	464.9	4819.1	81.7	179.4	95.8	520.9	1447.1	158.3	81.7	6.0		2580.7	7398.8
MAYOTTE	2.7	2.0	4.7				1.2						1.2	5.9
NEW CALEDONIA	5.5	2.3	7.8		0.1		3.0				0.2		4.3	12.1
FRENCH POLYNESIA	5.8	1.8	7.5	0.9			2.6	3.9			0.2		7.5	15.1
ST PIERRE & MIQUELON	2.9	1.0	3.9								0.0		0.0	3.9
FRENCH ANTARCTIC TERRITORIES	0.3		0.3										0.3	0.3
WALLIS & FUTUNA	2.3	1.0	3.3										3.3	3.3
* TOTAL FRENCH OCT	19.0	8.1	27.1	0.9	0.1		6.7	3.9		0.4			13.0	40.1
ARUBA	1.2	2.3	3.5	0.2			2.9				0.2		3.3	6.8
NETHERLANDS ANTILLES	13.5	2.1	15.6	0.6			0.2				0.6		1.5	17.0
* TOTAL DUTCH OCT	17.6	4.3	22.0	0.8			3.1			0.8			4.8	28.7
ANGUILLA	1.7		1.7				1.5						1.5	3.2
CAYMAN ISLANDS		1.5	1.5	0.5									0.5	2.0
FALKLAND ISLANDS											0.1		0.1	0.1
MONTSERAT	1.5	0.5	2.0				2.1				0.1		2.2	4.2
SAINT HELENA	1.4		1.4										1.4	1.4
SAINT VINCENT & GRENADINES				0.6	0.1		2.6				0.1		3.2	10.1
TURKS & CAICOS							0.2						0.2	0.2
VANUATU					0.5		1.0	19.3			0.1		21.9	27.5
VIRGIN ISLANDS		1.5	1.5	0.1			1.0						1.1	2.9
* TOTAL BRITISH OCT	7.0	3.5	10.5	0.9			4.8	0.1		0.5			6.3	16.8
ACP REGIONAL COOPERATION C			5.2										5.2	5.2
* TOTAL REGIONAL COOPERATION C			5.2										5.2	5.2
ALL COUNTRIES OCT					0.1								0.1	0.1
* TOTAL OCT	48.8	15.9	64.7	2.8	0.5		14.6	4.5		1.8			24.5	89.2
* TOTAL ACP + OCT	4402.9	480.8	4883.8	84.3	179.9	95.8	535.5	1451.7	158.3	83.5	6.0		2605.2	7489.0

6th EDF BY INSTRUMENT AND BY STATE (MECU)												2.1 Table 4	
ANNUAL YEAR 1998	NIP			NON NIP								TOTAL	
DECISIONS	Grants	Special Loans	Total NIP	Interest Subsidies	Emergency Aid	Refugee Aid	Risk Capital	STABEX	SYSMIN	Transfers from other Funds	Structural Adjustment Facilities	Total NON NIP	State
State													
ANGOLA	0,5		0,5										0,5
BENIN	-2,3		-2,3							-0,4		-0,4	-2,7
BOTSWANA	0,4		0,4										0,4
BURUNDI	-4,1		-4,1							-0,1		-0,1	-4,2
CHAD	-0,6		-0,6				-0,1					-0,1	-0,7
CAMEROON	0,2		0,2										0,2
CONGO	-0,1		-0,1										-0,1
COMOROS	0,0		0,0							0,0		0,0	0,0
CAPE VERDE	-0,1		-0,1										-0,1
DJIBOUTI	-0,2		-0,2										-0,2
EQUATORIAL GUINEA	-0,5		-0,5										-0,5
ETHIOPIA										0,0		0,0	0,0
GHANA	0,2		0,2				-0,9			0,0		-1,0	-0,8
GAMBIA	1,0		1,0										1,0
GUINEA BISSAU	0,0		0,0							0,2		0,2	0,2
GUINEA	-0,2		-0,2										-0,2
IVORY COAST	0,0		0,0										0,0
KENYA	-2,1		-2,1										-2,1
LIBERIA	19,6		19,6			-0,4				0,5		0,2	19,8
LESOTHO	-0,2		-0,2										-0,2
MADAGASCAR	2,5		2,5							1,8		1,8	4,3
MALAWI	0,0		0,0							-0,1		-0,1	-0,1
MAURITANIA	0,0		0,0										0,0
MOZAMBIQUE	0,0		0,0										0,0
NIG	0,1		0,1							-0,1		-0,1	0,0
RWANDA	-5,7	-10,0	-15,7				-1,6			-1,0		-2,5	-18,2
SEYCHELLES	0,0		0,0										0,0
SIERRA LEONE	0,0		0,0							-0,1		-0,1	-0,1
SOMALIA	-0,2		-0,2		0,0	-0,6						-0,6	-0,8
SAO TOME & PRINCIPE	0,0		0,0										0,0
SWAZILAND	0,3		0,3							0,1		0,1	0,4
TANZANIA	-1,5		-1,5				-0,3					-0,3	-1,8
TOGO	-0,5	-3,8	-4,4							0,0		0,0	-4,4
UGANDA	-0,1		-0,1			-0,3						-0,3	-0,4
NIGERIA	-7,1	-21,1	-28,2										-28,2
ZAMBIA	1,3		1,3										1,3
ZIMBABWE	-1,9		-1,9										-1,9
DEMOCRATIC REPUBLIC OF CONGO	-2,2		-2,2			0,0						0,0	-2,2
* TOTAL AFRICA	-3,6	-34,9	-38,5		0,0	-1,3	-3,0			0,9		-3,3	-41,9
BAHAMAS	-0,3	-0,3	-0,5										-0,5
DOMINICA	0,1		0,1							0,0		0,0	0,1
GRENADA	0,0		0,0							0,0		0,0	0,0
GUYANA	-0,1		-0,1										-0,1
JAMAICA	0,0		0,0							-0,1		-0,1	0,0
SURINAM	-0,3	-1,3	-1,5							-0,8		-0,8	-2,3
TRINIDAD & TOBAGO	-0,5		-0,5				0,0			-0,2		-0,2	-0,7
* TOTAL CARIBBEAN	-1,0	-1,5	-2,5				0,0			-1,1		-1,1	-3,6
FJI	-0,8	-0,1	-0,9										-0,9
KIRIBATI	0,0		0,0										0,0
PAPUA NEW GUINEA	-0,3		-0,3										-0,3
SOLOMON ISLANDS	-0,1		-0,1										-0,1
TUVALU	0,0		0,0										0,0
VANUATU	-0,1		-0,1				1,0					1,0	0,9
WESTERN SAMOA	0,3		0,3										0,3
* TOTAL PACIFIC	-0,9	-0,1	-1,0				1,0					1,0	0,0
ACP REGIONAL COOPERATION	8,1	-2,5	5,6							0,0		0,0	5,6
* TOTAL REGIONAL COOPERATION	8,1	-2,5	5,6							0,0		0,0	5,6
* TOTAL ACP	2,6	-39,0	-36,4		0,0	-1,3	-2,0			-0,2		-3,4	-39,8
MAYOTTE	0,3		0,3										0,3
NEW CALEDONIA	0,0		0,0										0,0
FRENCH POLYNESIA	0,0		0,0										0,0
ST PIERRE & MIQUELON	0,4		0,4							0,0		0,0	0,4
* TOTAL FRENCH OCT	0,6		0,6							0,0		0,0	0,6
ARUBA	-0,2		-0,2										-0,2
NETHERLANDS ANTILLES	-0,1	-4,7	-4,7										-4,7
* TOTAL DUTCH OCT	-0,3	-4,7	-4,9										-4,9
ANGUILLA	-0,1		-0,1										-0,1
MONTserrat	0,0		0,0										0,0
TRINIDAD & CAICOS	0,0		0,0				-0,4					-0,4	-0,4
VANUATU	-0,1		-0,1				1,0					1,0	0,9
* TOTAL BRITISH OCT	-0,1		-0,1				-0,4					-0,4	-0,5
ACP REGIONAL COOPERATION	0,0		0,0										0,0
* TOTAL REGIONAL COOPERATION	0,0		0,0										0,0
* TOTAL OCT	0,2	-4,7	-4,5				-0,4			0,0		-0,4	-4,8
* TOTAL ACP * OCT	2,8	-43,7	-40,9		0,0	-1,3	-2,3			-0,2		-3,8	-44,8

6th EDF BY INSTRUMENT AND BY STATE (MECU)											2.1 Table 5		
DECISIONS	NIP			NON NIP							Total NON NIP	TOTAL	
	Grants	Special Loans	Total NIP	Interest Subsidies	Emergency Aid	Refugee Aid	Risk Capital	STABEX	SYSMIN	Transfers from other Funds			Structural Adjustment Facilities
State												State	
ANGOLA	89.6		89.6			13.7	2.6	2.5				18.8	108.3
BENIN	85.8		85.8			0.3	0.1	12.7	17.7		3.2	34.1	119.9
BURKINA FASO	105.2		105.2			0.4		12.7	7.3		6.6	27.0	132.2
BOTSWANA	21.6	5.5	27.1	2.6		0.4	0.4	4.0		21.7	0.3	29.4	56.5
BURUNDI	83.6	9.9	93.6			0.2	0.4	10.1	44.5		1.1	56.2	149.8
CENTRAL AFRICAN REPUBLIC	67.3		67.3			0.6		6.0	31.2		2.6	40.4	107.7
CHAD	84.3		84.3			1.2	1.8	3.5	40.4		1.6	48.5	132.8
CAMEROON	70.2	29.4	99.6			0.1		1.0	198.8		3.3	203.2	302.5
CONGO	29.1	10.0	39.1					11.5			0.3	11.9	51.0
COMOROS	26.3		26.3					2.0	9.6		0.4	12.0	32.3
CAPE VERDE	24.4		24.4					3.0			0.3	3.3	27.7
DJIBOUTI	15.4		15.4			0.2	1.1	0.9			0.1	2.3	17.6
EQUATORIAL GUINEA	11.3		11.3					4.0	9.8			13.8	25.1
ETHIOPIA	164.6	6.7	171.2			47.5	10.2	29.9	98.6		0.8	187.1	358.3
GABON	16.5	7.3	23.8			0.1			3.1		0.3	3.5	27.3
GHANA	94.8		94.8	3.2				22.0			0.6	25.2	120.0
GAMBIA	20.7		20.7			0.2		5.7	13.7		0.2	19.8	40.5
GUINEA BISSAU	36.4		36.4			0.1		3.4	2.9		0.4	6.8	43.2
GUINEA	105.7	5.0	110.7			1.1	2.3	38.0		33.7	0.8	75.9	186.6
IVORY COAST	60.6	21.2	81.7	11.8		0.9	1.4	0.1	365.3		3.3	383.3	465.0
KENYA	95.0	10.9	105.0	10.8		0.4	0.0	6.6	70.9		1.3	90.1	195.1
LIBERIA	39.9		39.9			6.7	1.8					8.5	48.3
LESOTHO	31.1	9.9	40.9					5.0	4.4		1.1	10.4	51.3
MADAGASCAR	101.4	11.6	113.0			0.3		30.4	4.5		1.2	36.4	149.3
MALAWI	104.6	5.0	109.5	1.7		4.1	13.2	11.7	21.7		0.8	53.2	162.7
MAURITIUS	20.1	9.7	29.8	3.2		0.1		5.8	3.0		0.2	12.2	42.1
MAURITANIA	60.8		60.8			0.7	1.5	21.5		18.0	0.7	42.4	103.2
MALI	121.8	5.0	126.8			0.8		14.8	20.3		2.7	38.5	165.3
MOZAMBIQUE	145.3		145.3			16.3	13.3	10.9	21.5			61.9	207.2
NIGER	103.2	4.6	107.8			0.4	2.7	14.3	6.6	12.2	1.5	37.7	145.6
RWANDA	85.8		85.8			1.6	0.2	7.2	61.9			70.9	156.7
SENEGAL	98.3	9.7	108.2			1.6	4.2	22.3	107.0	22.4	2.4	160.1	268.2
SEYCHELLES	6.2		6.2	0.2				1.5				1.7	7.9
SIERRA LEONE	5.6	4.9	10.5			0.4		7.5			1.8	9.7	22.2
SOMALIA	135.6		135.6			10.5	3.8	11.3			5.2	30.7	166.3
SAO TOME & PRINCIPE	5.9		5.9			0.1		2.3	1.6		0.2	4.0	10.0
SUDAN	69.3		69.3			40.7	20.1	21.7	63.9		0.6	147.0	216.3
SWAZILAND	20.2	4.8	25.0	0.7			1.3	7.0			0.3	9.4	34.4
TANZANIA	161.0		161.0			0.1		13.4	8.9		1.7	23.4	184.4
TOGO	46.9	2.4	49.3					7.5	25.5		0.8	33.9	83.2
UGANDA	126.2		126.2			2.8	5.9	15.6			2.2	26.3	152.5
NIGERIA	50.3	128.3	178.6	15.0		1.1		0.6			6.9	17.6	196.2
ZAMBIA	73.1	15.0	88.1			0.6	0.6	11.4			1.7	14.3	102.4
ZIMBABWE	42.0	29.4	71.4	10.5			1.3	0.9				12.7	84.2
DEMOCRATIC REPUBLIC OF CONGO	112.1	7.1	119.3	1.3		0.9	2.1				4.0	8.3	127.5
* TOTAL AFRICA	3121.1	352.2	3473.4	61.1	156.8	92.5	424.4	1284.5	108.0	56.9	6.0	2164.0	5637.3
ANTIGUA-BARBUDA	3.4	1.0	4.4					1.5				1.5	5.9
BARBADOS	2.5	0.3	2.9	1.1				0.4			0.5	2.1	5.0
BELIZE	5.0	3.0	8.0	0.1			1.8	0.9			2.1	5.0	13.0
BAHAMAS	2.6	0.7	3.3	2.6							0.1	2.7	5.9
DOMINICA	3.8		3.8					3.8	1.2		0.8	5.0	10.9
GRENADA	3.5		3.5			0.1		2.6	2.5		0.2	5.3	10.7
GUYANA	21.8		21.8			0.2		3.6			0.1	3.9	25.7
JAMAICA	29.8	10.0	39.8	5.4		0.8		2.1			3.2	11.4	51.2
ST CHRISTOPHER NEVIS	3.1		3.1					1.3				1.5	4.6
SAINT LUCIA	5.1		5.1			0.9		2.0				3.0	8.1
SURINAM	15.3	0.5	15.8			0.1		3.0			0.8	3.9	19.7
SAINT VINCENT & GRENADINES	6.7		6.7	0.6		0.1		2.6			0.6	3.2	10.0
TRINIDAD & TOBAGO	6.9	6.9	13.9	2.0		0.1		3.0			0.2	11.2	24.1
* TOTAL CARIBBEAN	113.5	21.8	135.1	12.8	1.4	1.8	28.9	3.7	3.7	13.2	6.0	59.7	194.7
FUJI	12.8	4.9	17.7	2.1		0.3		1.2	0.3		0.2	4.1	21.9
KIRIBATI	6.4		6.4					2.5			0.3	2.8	9.2
PAPUA NEW GUINEA	20.1	13.5	33.6	4.6			0.6	3.5	110.0	25.3	0.1	144.1	177.7
SOLOMON ISLANDS	13.1	1.8	15.0			0.1		2.0	31.3		0.1	33.8	48.8
TONGA	6.2		6.2	0.2				1.7	4.3		0.1	6.3	12.4
TUVALU	1.6		1.6					0.5	0.1			0.6	2.3
VANUATU	6.4		6.4			0.5			19.3		0.1	20.0	26.4
WESTERN SAMOA	8.7		8.7			0.2		4.2	11.1		0.1	15.6	24.3
* TOTAL PACIFIC	75.4	20.2	95.6	7.0	1.5	0.8	13.1	178.9	25.3	1.0	6.0	227.2	322.0
ACP REGIONAL COOPERATION	68.6	49.3	117.9	1.0				55.5			12.9	69.5	88.4
* TOTAL REGIONAL COOPERATION A	768.6	49.3	817.9	1.0				55.5			12.9	68.5	887.4
ALL COUNTRIES ACP						19.9						20.1	20.1
FINANCIAL & ADMIN. EXPENSES	7.1		7.1								6.0	6.0	13.1
* TOTAL ACP	4085.7	443.3	4529.0	61.7	178.4	94.8	519.9	1447.1	133.3	84.2	6.0	2548.4	7075.4
MAYOTTE	2.5	2.0	4.5					1.2				1.2	5.6
NEW CALEDONIA	5.5	2.3	7.8			0.1		3.0				4.1	11.9
FRENCH POLYNESIA	4.5	1.8	6.3	0.9				2.6	3.9		0.2	7.5	13.8
ST PIERRE & MIQUELON	2.4	1.0	3.4									0.0	3.4
FRENCH ANTARCTIC TERRITORIES	0.3		0.3									0.3	0.3
WALLIS & FUTUNA	2.3	0.9	3.2									3.2	3.2
* TOTAL FRENCH OCT	17.5	8.0	25.5	0.9	0.1			6.7	3.9	0.8	0.4	12.8	38.3
ARUBA	4.1	1.6	5.7	0.2				2.9			0.2	3.3	9.0
NETHERLANDS ANTILLES	13.1	2.1	15.2	0.6				0.2			0.6	1.5	16.7
* TOTAL DUTCH OCT	17.2	3.7	20.9	0.8				3.1			0.8	4.8	25.7
ANGUILLA	1.7		1.7					1.5				1.5	3.2
CAYMAN ISLANDS		1.5	1.5	0.5								0.5	2.0
FALKLAND ISLANDS	0.7		0.7						0.1			0.5	1.2
MONTSERRAT	1.5		1.5					2.1				2.2	4.2
SAINT HELENA	1.4		1.4									1.4	1.4
SAINT VINCENT & GRENADINES	6.7		6.7	0.6		0.1		2.6			0.9	3.2	10.0
TURKS & CAICOS	1.6		1.6					0.2				0.2	1.8
VANUATU	6.4		6.4			0.5			19.3		0.1	20.0	26.4
VIRGIN ISLANDS	1.0		1.0	0.4				1.0			0.1	1.1	2.9
* TOTAL BRITISH OCT	8.9	3.5	12.4	0.9				4.8	0.1		0.5	6.3	16.7
OCT REGIONAL COOPERATION	1.1		1.1									1.1	1.1
* TOTAL REGIONAL COOPERATION C	4.4		4.4									4.4	4.4
ALL COUNTRIES OCT						0.1						0.1	0.1
* TOTAL OCT	46.1	15.2	61.3	2.6	0.5			14.8	4.0	0.3	1.9	24.3	85.6
* TOTAL ACP + OCT	4131.9	458.5	4590.2	64.3	178.9	94.8	534.5	1451.1	133.3	84.9	6.0	2572.7	7181.0

6th EDF BY INSTRUMENT AND BY STATE (MECU)

2.1 Table 6

ANNUAL YEAR 1998 DECISIONS	NIP			NON NIP								Total NON NIP	TOTAL State
	Grants	Special Loans	Total NIP	Interest Subsidies	Emergency Aid	Refugee Aid	Risk Capital	STABEX	SYSMIN	Transfers from other Funds	Structural Adjustment Facilities		
ANGOLA	0,7		0,7										0,7
BENIN	0,5		0,5										0,5
BURKINA FASO	2,1		2,1										2,1
BOTSWANA	1,9	0,0	1,9										2,1
BURUNDI	-0,2		-0,2										-0,2
CENTRAL AFRICAN REPUBLIC	0,2		0,2										0,3
CHAD	-0,6		-0,6										-0,7
CAMEROON	0,3		0,3										0,1
CONGO	-0,1		-0,1										-0,1
COMOROS	0,0		0,0										0,0
CAPE VERDE	0,7		0,7										0,7
DJIBOUTI	0,7		0,7										0,7
EQUATORIAL GUINEA	0,2		0,2										0,2
ETHIOPIA	-1,2	0,0	-1,3			0,0							-1,3
GABON	-0,1		-0,1										-0,1
GHANA	0,7		0,7										-0,3
GAMBIA	1,0		1,0										1,0
GUINEA BISSAU	0,3		0,3										0,5
GUINEA	0,0		0,0							0,1			0,1
IVORY COAST	1,8	-0,1	1,7										2,7
KENYA	3,0		3,0										4,0
LIBERIA	14,8		14,8										14,8
LESOTHO	0,3		0,3										0,7
MADAGASCAR	11,6	-0,1	11,6										11,6
MALAWI	1,4		1,4										1,4
MALDIVUS	0,1		0,1										0,1
MALRITANIA	0,4		0,4										0,4
MALI	-0,8		-0,8										-0,5
MOZAMBIQUE	5,7		5,7										5,7
NIGER	3,2	0,0	3,2						0,1				3,3
RWANDA	-5,9	-10,0	-15,9										-18,4
SENEGAL	0,1	-0,3	-0,2							8,2			8,0
SEYCHELLES	0,0		0,0										0,0
SIERRA LEONE	0,2		0,2										0,2
SOMALIA	4,9		4,9		0,0	-0,1							-0,1
SAO TOME & PRINCIPE	0,1		0,1										0,1
SUDAN	-0,2		-0,2			0,1							-0,1
SWAZILAND	0,4	-0,1	0,3										0,5
TANZANIA	-0,3		-0,3										-0,6
TOGO	-0,3	0,0	-0,3										-0,3
UGANDA	0,1		0,1										0,1
NIGERIA	-2,0	-0,4	-2,5										-2,5
ZAMBIA	0,1		0,1										0,0
ZIMBABWE	-1,9	0,2	-1,7										-1,7
DEMOCRATIC REPUBLIC OF CONGO	0,5		0,5										2,8
* TOTAL AFRICA	44,2	-10,8	33,4		0,0	0,0	-3,0		8,4	4,2		9,6	43,0
BARBADOS	0,0		0,0										0,1
BELIZE	0,0		0,0										0,0
BAHAMAS	-0,3	-0,2	-0,5										-0,5
DOMINICA	0,1		0,1										0,1
GRENADA	0,0		0,0										0,0
GUYANA	0,1		0,1										0,1
JAMAICA	0,0		0,0										0,0
NAM	0,0		0,0										-0,5
SANT VINCENT & GRENADINES	0,1		0,1										0,1
TRINIDAD & TOBAGO	0,4		0,4										0,2
* TOTAL CARIBBEAN	0,5	-0,2	0,3				0,0			-0,7		-0,8	-0,4
FIJI	-0,3		-0,3										-0,3
KIRIBATI	0,0		0,0										0,0
PAPUA NEW GUINEA	-0,2		-0,2										-0,2
SOLOMON ISLANDS	-0,1	0,0	-0,1										-0,1
TONGA	0,6		0,6										0,6
TUVALU	0,0		0,0										0,0
VANUATU	0,1		0,1										0,1
WESTERN SAMOA	0,0		0,0										0,0
* TOTAL PACIFIC	0,1	0,0	0,1										0,1
ACP REGIONAL COOPERATION	18,6	-0,4	18,2										17,9
* TOTAL REGIONAL COOPERATION A	18,6	-0,4	18,2							-0,4		-0,4	17,9
FINANCIAL & ADMINIS. EXPENSES	0,1		0,1										0,1
* TOTAL ACP	63,6	-11,4	52,2		0,0	0,0	-3,0		8,4	3,1		8,5	60,7
MAYOTTE	0,0		0,0										0,0
NEW CALEDONIA	0,0		0,0										0,0
FRENCH POLYNESIA	0,2		0,2										0,2
ST PIERRE & MIQUELON	0,1		0,1										0,1
WALLIS & FUTUNA	0,0		0,0										0,0
* TOTAL FRENCH OCT	0,6		0,6							0,0		0,0	0,6
ARUBA	0,0		0,0										0,0
NETHERLANDS ANTILLES	0,5		0,5										0,5
* TOTAL DUTCH OCT	0,5		0,5										0,5
SANT VINCENT & GRENADINES	0,1		0,1										0,1
TURKS & CAICOS	0,1		0,1										0,1
ANGUILLA	0,1		0,1										0,1
* TOTAL BRITISH OCT	0,3		0,3				-0,4					-0,4	-0,4
ACP REGIONAL COOPERATION	0,1		0,1										0,1
* TOTAL REGIONAL COOPERATION C	-0,1		-0,1										-0,1
* TOTAL OCT	0,9		0,9				-0,4			0,0		-0,4	0,6
* TOTAL ACP + OCT	64,6	-11,4	53,2		0,0	0,0	-3,3		8,4	3,1		8,1	61,3

6th EDF BY INSTRUMENT AND BY STATE (MECU)

2.1 Table 8

ANNUAL YEAR 1998		6th EDF BY INSTRUMENT AND BY STATE (MECU)										2.1 Table 8	
DECISIONS		NIP			NON NIP							TOTAL	
State	Grants	Special Loans	Total NIP	Interest Subsidies	Emergency Aid	Refugee Aid	Risk Capital	STABEX	SYSDM	Transfers from other Funds	Structural Adjustment Facilities	Total NON NIP	State
ANGOLA	0,9		0,9										0,9
BENIN	0,3		0,3							0,2		0,2	0,5
BURKINA FASO	7,1		7,1				2,2			0,3		2,6	9,6
BOTSWANA	0,5	1,3	1,8							0,0		0,0	1,8
BURUNDI	0,1		0,1										0,1
CENTRAL AFRICAN REPUBLIC	1,4		1,4							1,1		1,1	2,4
CHAD	1,5		1,5							0,0		0,0	1,5
CAMEROON	1,5		1,5							0,0		0,0	1,5
CONGO	0,3		0,3							0,1		0,1	0,4
COMOROS	0,0		0,0										0,0
CAPE VERDE	0,3		0,3										0,3
DJIBOUTI	0,0		0,0										0,0
EQUATORIAL GUINEA	1,4		1,4										1,4
ETHIOPIA	4,5		4,5			0,0	0,5			0,1		0,5	5,0
GABON	0,2		0,2										0,2
GHANA	9,7		9,7										9,7
GAMBIA	0,1		0,1										0,1
GUINEA BISSAU	1,8		1,8							0,2		0,2	1,9
GUINEA	1,6	0,2	1,7					12,0		0,1		12,1	13,9
IVORY COAST	2,4	0,1	2,6							1,0		1,0	3,6
KENYA	2,9		2,9							0,1		0,1	3,0
LIBERIA	10,1		10,1										10,1
LESOTHO	0,1		0,1							0,2		0,2	0,4
MADAGASCAR	13,2	0,4	13,6							0,3		0,3	13,9
MAURITIUS	0,9		0,9							0,1		0,1	1,0
MAURITANIA	0,8		0,8							0,0		0,0	0,9
MAURITANIA	0,4		0,4						0,9			0,9	1,3
MALI	0,1		0,1							0,0		0,0	0,1
MOZAMBIQUE	3,5		3,5										3,5
NIGER	3,1		3,1										3,1
RWANDA	0,3		0,3										0,3
SENEGAL	1,0		1,0						5,0			5,0	6,0
SEYCHELLES	0,0		0,0										0,0
SIERRA LEONE	0,1		0,1							0,1		0,1	0,2
SOMALIA	8,5		8,5		0,0	-0,1				0,9		0,8	9,3
SAO TOME & PRINCIPE	0,1		0,1										0,1
SUDAN	0,0		0,0			0,0						0,0	0,0
SWAZILAND	0,8	0,0	0,9							0,1		0,1	0,9
TANZANIA	0,4		0,4										0,4
TOGO	0,1	0,0	0,1							0,1		0,1	0,1
UGANDA	0,5		0,5										0,5
NIGERIA	0,2	0,0	0,2										0,2
ZAMBIA	0,2		0,2							0,1		0,1	0,3
ZIMBABWE	0,9	0,5	1,3										1,3
DEMOCRATIC REPUBLIC OF CONGO	0,0		0,0							2,9		2,9	2,9
* TOTAL AFRICA	83,8	2,4	86,2		0,0	-0,1	14,7		6,0	8,0		28,5	114,8
ANTIGUA-BARBUDA	0,1		0,1										0,1
BARBADOS	0,0		0,0										0,0
BELIZE	0,1		0,1							0,0		0,0	0,1
DOMINICA										0,0		0,0	0,0
GRENADA	0,0		0,0							0,0		0,0	0,0
GUAYANA	0,2		0,2										0,2
JAMAICA	0,8		0,8							0,0		0,0	0,8
SURINAM	0,0		0,0										0,0
SAINT VINCENT & GRENADINES	0,1		0,1										0,1
TRINIDAD & TOBAGO	0,3		0,3							0,2		0,2	0,5
* TOTAL CARIBBEAN	2,0		2,0							0,2		0,2	2,3
FIJI	1,0		1,0										1,0
KIRIBATI	0,0		0,0										0,0
PAPUA NEW GUINEA		2,4	2,4						2,9			2,9	5,3
SOLOMON ISLANDS	0,1	0,1	0,2										0,2
TONGA	0,4		0,4										0,4
TUVALU	0,0		0,0										0,0
VANUATU	0,3		0,3										0,3
* TOTAL PACIFIC	1,9	2,5	4,3						2,9			2,9	7,3
ACP REGIONAL COOPERATION	25,0	0,6	25,6							1,6		1,6	27,2
* TOTAL REGIONAL COOPERATION	25,0	0,6	25,6							1,6		1,6	27,2
FINANCIAL & ADMINIS. EXPENSES	0,3		0,3										0,3
* TOTAL ACP	113,0	5,5	118,5		0,0	-0,1	14,7		8,9	9,8		33,3	151,7
MAYOTTE	0,0		0,0										0,0
FRENCH POLYNESIA	0,6		0,6										0,6
ST PIERRE & MIQUELON	0,4		0,4										0,4
WALLIS & FUTUNA	0,0	0,0	0,0										0,0
* TOTAL FRENCH OCT	1,0	0,0	1,0							0,0		0,0	1,0
ARUBA	0,0		0,0										0,0
NETHERLANDS ANTILLES	0,6		0,6								0,1	0,1	1,1
* TOTAL DUTCH OCT	0,7		0,7							0,4		0,4	1,1
SAINT VINCENT & GRENADINES	0,1		0,1										0,1
VANUATU	0,3		0,3										0,3
EUROPEAN REGIONAL COOPERATION	0,0		0,0										0,0
* TOTAL REGIONAL COOPERATION	0,0		0,0										0,0
* TOTAL OCT	1,7	0,0	1,7							0,5		0,5	2,1
* TOTAL ACP * OCT	114,7	5,5	120,2		0,0	-0,1	14,7		8,9	10,2		33,7	153,9

7th EDF RESULT BY STATE (MECU)

ANNUAL 1998

2,2 Table 2

State	NATIONAL INDICATIVE PROGRAMME						NGN NIP				TOTAL Delegated			
	NIP	Decisions			Delegated Appropriations	Payments			Decisions	Payments		Decisions	Appropriations	Payments
		Mecu	Mecu	% NIP		Mecu	Mecu	% NIP		Mecu	% NIP			
ANGOLA	115.0	0.6	0.5%	10.1	5.9	5.1%	0.1		0.1		0.6	10.1	6.0	
BENIN	93.8	3.1	-3.4%	5.8	13.2	14.1%	0.1		-0.6		-3.1	5.5	13.2	
BURKINA FASO	149.3	0.6	0.4%	9.5	15.2	10.2%	0.3		9.7		0.9	14.0	24.8	
BOTSWANA	32.0	0.1	-0.2%	2.9	6.4	19.9%	-1.4		16.3		-1.5	2.1	22.7	
BURUNDI	112.0	0.0	0.0%	-0.1	0.0	0.0%	-1.4		0.0		-1.5	0.1	0.1	
CENTRAL AFRICA REPUBLIC	75.0	0.1	0.1%	1.9	33.4	44.5%	0.0		1.5		0.1	2.8	34.9	
CHAD	110.3	5.0	4.5%	6.0	14.8	13.4%	-0.6		0.1		4.3	5.8	14.9	
CAMEROON	110.0	0.1	0.1%	18.9	10.3	9.4%	-0.0		0.4		0.1	20.5	10.7	
CONGO	51.0	0.7	1.4%	2.8	1.5	3.0%	-0.0				0.7	3.3	1.5	
COMOROS	23.5	1.8	7.5%	5.1	3.9	16.8%					1.8	6.1	3.9	
CAPE VERDE	24.7	0.1	0.2%	3.1	3.3	13.4%	-0.7		-0.6		-0.6	2.5	2.7	
DJIBOUTI	19.9	0.1	-0.6%	1.2	5.0	25.1%			3.1		-0.1	4.2	6.1	
EQUATORIAL GUINEA	12.5	6.2	49.6%			0.0%	-0.8		-0.8		5.4	0.8	-0.8	
ERYTREA	55.0	0.0	-0.1%	1.3	2.6	4.7%	1.0		2.2		0.9	1.5	4.8	
ETHIOPIA	214.0	82.4	38.5%	0.4	11.9	5.6%	-2.3		9.2		80.1	0.4	21.1	
GABON	29.9	1.0	-3.5%	0.3	2.3	7.5%	0.2		1.6		-0.8	2.2	4.1	
GHANA	109.4	13.4	12.3%	18.2	17.9	16.4%	-0.4		1.9		13.0	18.8	19.8	
GAMBIA	23.5	0.2	0.9%	2.0	1.6	6.9%			2.0		0.2	4.0	3.6	
GUINEA BISSAU	37.0	0.1	-0.3%	0.5	5.1	13.7%	0.5		0.3		0.3	0.9	5.9	
GUINEA	127.6	4.9	3.8%	27.6	11.4	8.9%	4.7		7.5		9.6	40.5	18.9	
IVORY COAST	111.8	0.1	0.1%	14.2	15.1	13.5%	-0.4		6.2		-0.3	18.3	21.4	
KENYA	140.0	0.0	0.0%	14.6	16.8	12.0%	0.1		12.6		0.1	14.7	30.3	
LESOTHO	50.0	0.0	0.0%			0.0%	8.4		-2.1		8.4	0.0	-0.1	
LIBERIA	50.0	0.1	0.1%	0.2	9.5	18.9%	11.5		2.5		11.6	9.8	12.0	
MADAGASCAR	133.2	0.2	-0.1%	14.6	23.4	17.6%	1.5		2.2		1.3	16.8	25.6	
MALAWI	129.2	8.4	6.5%	21.4	20.6	15.9%	-8.9		1.5		-0.5	25.6	38.1	
MAURITIUS	34.0	6.0	17.6%	4.6	2.6	7.8%	0.2		3.6		6.1	5.3	6.3	
MAURITANIA	65.9	0.5	0.7%	3.5	3.5	5.3%	1.1		3.0		1.6	28.2	11.5	
MALI	158.0	1.2	0.8%	10.4	15.1	9.6%	-1.4		1.4		-0.2	14.6	16.6	
MOZAMBIQUE	170.6	1.1	0.6%	13.0	25.8	15.1%	-0.2		2.2		0.9	14.8	29.6	
NAMIBIA	50.0	0.1	0.1%	4.6	6.8	13.6%	-0.2		3.2		-0.1	4.4	14.9	
NIGER	143.9	3.1	2.2%	10.8	15.0	10.4%	0.0		1.4		3.1	11.2	16.3	
RWANDA	118.0	7.2	6.1%	18.3	8.2	7.0%	-1.4		0.6		5.9	20.5	8.9	
SENEGAL	125.9	2.0	1.6%	5.7	13.8	10.9%	-2.0		1.5		-0.1	4.0	21.2	
SEYCHELLES	5.4	0.0	0.0%	0.7	0.8	14.7%			1.1		0.0	0.7	1.9	
SIERRA LEONE	83.6	1.8	2.2%	4.4	3.3	3.9%	-1.7		5.3		0.1	9.2	8.6	
SOMALIA	0.0								0.3		0.0	4.4	0.9	
SAO TOME & PRINCIPE	8.0	0.9	10.7%	0.6	0.1	1.7%	-0.0		0.2		0.8	0.6	0.4	
SUDAN							-0.0		-0.4		0.0	0.1	-0.4	
SWAZILAND	28.1	0.2	-0.8%	4.6	3.4	12.3%	0.1		2.2		-0.2	4.6	6.4	
TANZANIA	185.0	9.0	4.9%	25.2	22.1	11.9%			12.7		9.0	30.2	34.8	
TOGO	68.0	11.8	17.3%	0.9	2.5	3.6%	0.2		-2.5		12.0	0.9	2.0	
UGANDA	163.2	5.8	3.6%	16.6	22.2	13.6%	10.0		1.2		15.9	23.2	35.2	
YUGERIA	365.0	28.5	-7.8%	-0.1	1.3	0.4%			2.0		-28.5	0.1	1.3	
ZAMBIA	110.7	0.1	0.1%	9.7	11.3	10.2%	-0.9		5.2		-0.9	9.9	16.5	
ZIMBABWE	91.5	1.2	-1.3%	13.4	19.9	21.7%	-12.0		-4.5		-13.2	1.6	15.4	
ZAIRE	170.0	0.0	0.0%	23.6	4.2	2.4%	-0.0		3.6		0.0	24.0	8.1	
* TOTAL AFRICA	4,284.4	140.3	3.3%	352.9	432.9	10.1%	2.9		171.9		143.2	441.0	604.8	
ANTIGUA-BARBUDA	3.5	0.0	1.3%	1.7	1.1	32.3%			0.2		0.0	1.7	1.3	
BADOS	5.5	0.0	0.2%	0.3	0.2	2.8%	-0.6		2.4		-0.6	0.3	2.6	
BELIZE	9.0	0.0	0.0%	0.0	0.0	0.2%	0.1		1.9		0.1	0.1	1.9	
BAHAMAS	4.4		0.0%		0.7	16.4%	-0.0		3.4		0.0		4.1	
DOMINICAN REPUBLIC	85.0	3.5	4.1%	12.2	14.3	16.9%	0.0		1.1		3.5	12.4	26.0	
DOMINICA	5.5	0.0	0.5%	0.3	0.5	8.6%	-12.8		-2.3		-12.7	12.5	-12.3	
GRENADA	6.5	0.4	-6.1%	-0.4	0.2	2.4%	-1.7		1.1		-2.1	2.1	-1.6	
GUAYANA	32.8	0.0	0.0%	6.9	1.9	5.8%	0.3		1.5		0.3	8.4	3.4	
HAITI	112.5	8.4	7.5%	14.8	23.8	21.1%	4.0		4.6		12.4	18.5	28.6	
JAMAICA	49.7	0.3	0.6%	2.1	3.3	6.7%	-2.0		4.4		-1.7	4.7	9.7	
S. CHRISTOPHER NEVIS	2.5		0.0%	0.0		0.0%			2.7		0.0	0.0	0.7	
SAINTE LUCIA	5.0		0.0%	0.6	0.2	3.1%	-17.7		-1.2		-17.7	1.7	-17.2	
SURINAME	27.0	0.7	2.5%	0.5	2.2	8.2%	-0.3		1.2		0.3	1.8	3.2	
S. VINCENT & GRENADINES	5.4		0.0%	0.6	1.1	19.8%	-13.5		-0.5		-13.5	12.7	-7.8	
TRINIDAD & TOBAGO	18.1	0.0	-0.1%	-0.1	3.1	17.2%	0.5		4.2		0.5	0.3	7.7	
* TOTAL CARIBBEAN	372.4	12.5	3.4%	39.3	52.5	14.1%	-43.7		-2.1		-31.2	2.5	50.4	
F. I.	22.0	1.0	-4.6%	0.1	0.3	1.3%	0.3		2.2		-0.8	0.3	0.4	
AFGHANISTAN	6.0	0.4	7.4%	0.4	0.5	8.4%					0.4	0.4	0.5	
AFGHAN-NEW GUINEA	46.2	0.1	-0.1%	4.1	5.6	12.2%	-0.8		2.3		-0.8	9.3	34.5	
CALCOMON ISLANDS	20.9	1.5	7.2%	3.0	1.5	7.2%	-0.4		1.1		1.1	4.4	1.6	
COLOMBIA	6.0	0.0	0.0%	2.6	1.2	20.0%	-0.4		1.2		-0.4	2.2	1.4	
COLOMBIA	1.3		0.0%		0.0	0.9%	-0.0				0.0		0.0	
FIJI	7.5	0.0	-0.3%	0.3	0.9	12.2%	0.5		1.1		0.5	0.3	0.9	
WESTERN SAMOA	9.0	5.3	59.1%	-0.0	0.6	6.4%					5.3	0.2	0.6	
* TOTAL PACIFIC	119.0	6.2	5.2%	10.6	10.6	100.7%	-0.8		29.3		5.4	17.5	39.9	
EUROPEAN COUNTRIES							0.7		1.1		0.7	1.1	6.0	
EUROPEAN COOPERATION	1,102.9	7.5	-0.9%	83.0	96.8	109.9%	-5.9		1.1		-13.4	10.2	105.9	
FINANCIAL & ADMIN. EXPENSES	3.2		0.0%	0.1	0.1						0.3	0.3	0.9	
RESERVE	14.1		0.0%											
* TOTAL ACP	5,985.9	151.5	2.5%	490.9	532.9	120.8%	-48.8		24.5		104.7	551.0	808.3	
TOTAL OCT	97.5	11.6	11.9%	11.0	6.4	58.4%	0.6		4.4		12.2	12.5	10.8	
* TOTAL ACP + OCT	6,083.4	163.1	2.7%	501.9	589.3	119.4%	-48.2		28.9		116.9	563.5	819.1	

7th EDF BY INSTRUMENT AND BY STATE (MECU)												2.2 Table 4
ANNUAL YEAR 1998												
DECISIONS	NIP	NON NIP										TOTAL
State	Grants	Interest Subsidies	Emergency Aid	Refugee Aid	Risk Capital	STABEX	YSYMIN	Transfers from other Funds	Structural Adjustment Facilities	HIPC debt relief	Total NON NIP	State
ANGOLA	0.6											0.6
BENIN	-3.1					-0.2		0.3			0.1	-3.1
BURKINA FASO	0.6				0.9	-0.7					0.3	0.9
BOTSWANA	-0.1	-1.1			-0.3						-1.4	-1.5
BURUNDI	0.0					-0.3		-1.1			-1.4	-1.3
CENTRAL AFRICAN REPUBLIC	0.1							0.0			0.0	0.1
CHAD	5.0							-0.6			-0.6	4.3
CAMEROON	0.1							0.0			0.0	0.1
CONGO	0.7							0.0			0.0	0.7
COMOROS	1.8											1.8
CAPE VERDE	0.1		0.0			-0.7					-0.7	-0.6
DJIBOUTI	-0.1											-0.1
EQUATORIAL GUINEA	6.2					-0.8					-0.8	5.4
ERITREA	0.0		1.0	-0.1							1.0	0.9
ETHIOPIA	82.1				-1.3			-1.0			-2.3	80.1
GABON	-1.0							0.2			0.2	-0.8
GHANA	13.4	-0.1									-0.4	13.0
GAMBIA	0.2											0.2
GUINEA BISSAU	-0.1		1.0		-0.5						0.5	0.3
GUINEA	4.9		1.0	0.2	0.5		0.0	0.0	3.0		4.7	9.6
IVORY COAST	0.1		0.0		-0.3						-0.4	-0.3
KENYA	0.0			0.0	0.1						0.1	0.1
LIBERIA			-0.3	2.2				6.5			8.4	8.1
LESOTHO	0.1	8.8						2.7			11.5	11.6
MADAGASCAR	-0.2							1.5			1.5	1.3
MALAWI	8.4					-8.1		-0.8			-8.9	-0.5
MAURITIUS	6.0							0.2			0.2	6.1
MAURITANIA	0.5				1.0			0.1			1.1	1.6
MALI	1.2			-0.1	-0.5			-0.8	-0.1		-1.4	-0.2
MOZAMBIQUE	1.1			-0.2							-0.2	0.9
NAMIBIA	0.1	-0.2									-0.2	-0.1
NIGER	3.1							0.0			0.0	3.1
RWANDA	-2					-1.2		-0.1			-1.4	5.9
SENEGAL	2.0				0.6	-2.9		0.3			-2.0	-0.1
SEYCHELLES	0.0											0.0
SIERRA LEONE	1.8		0.0			-1.2	0.0	-0.5			-1.7	0.1
SAO TOME & PRINCIPE	0.9								6.0		0.0	0.8
SUDAN			0.0								0.0	0.0
SWAZILAND	-0.2							0.1			0.1	-0.2
TANZANIA	9.0											9.0
TOGO	11.8					-1.2		1.5			0.2	12.0
UGANDA	5.8				0.8	-0.4			5.1	4.6	10.0	15.9
NIGERIA	-28.5											-28.5
ZAMBIA	0.1						0.1	-0.9	-0.1		-0.9	-0.9
ZIMBABWE	-1.2	-1.1				-12.1		1.3			-12.0	-13.2
DEMOCRATIC REPUBLIC OF CONGO	0.9			0.0							0.0	0.0
* TOTAL AFRICA	140.3	6.0	2.7	2.0	0.9	-29.9	0.1	8.6	7.8	4.6	2.9	143.2
ANTIGUA-BARBUDA	0.0											0.0
BARBADOS	0.0	-0.6									-0.6	-0.6
BELIZE								0.1			0.1	0.1
BAHAMAS								0.0			0.0	0.0
DOMINICAN REPUBLIC	3.5	0.0									0.0	3.5
DOMINICA	0.0					-12.8		0.0			-12.8	-12.7
GRENADA	-0.1					-1.7		0.6			-1.7	-2.1
GYANA	0.0						0.3				0.3	0.3
HAITI	8.1				4.0						4.0	12.1
JAMAICA	0.3	-1.7						-0.2			-2.0	-1.7
SAINT LUCIA						-1.7					-1.7	-1.7
SURINAM	0.7							-0.3			-0.3	0.3
SAINT VINCENT & GRENADINES						-13.5					-13.5	-13.5
TRINIDAD & TOBAGO	0.0	0.8						-0.3			0.3	0.5
* TOTAL CARIBBEAN	12.5	-1.5			4.0	-45.7	0.3	-0.8			-43.7	-31.2
FUJI	-1.0				0.3						0.3	-0.8
KIRIBATI	0.1											0.1
PAPUA NEW GUINEA	-0.1	-0.8									-0.8	-0.8
SOLOMON ISLANDS	1.5					-0.2		-0.2			-0.4	1.1
TONGA	0.0	-0.4									-0.4	-0.4
TUVALU						0.0					0.0	0.0
VANUATU	0.0				1.0	-0.5					0.5	0.5
WESTERN SAMOA	5.3											5.3
* TOTAL PACIFIC	6.2	-1.1			1.3	-0.6		-0.2			-0.8	5.4
ACP REGIONAL COOPERATION	-7.5	-1.1			1.7			-6.5			-5.9	-13.4
* TOTAL REGIONAL COOPERATION A	-7.8	-1.1			1.7			-6.5			-5.9	-13.4
ALL COUNTRIES ACP			0.7								0.7	0.7
* TOTAL ACP	151.5	2.3	3.4	2.0	7.9	-78.2	0.4	1.1	7.8	4.6	-48.8	104.7
MAYOTTE	0.1				2.0						2.0	2.1
NEW CALEDONIA	3.4							0.0			0.6	4.0
FRENCH POLYNESIA		-0.3	0.1		-1.1						-1.3	-1.3
ST PIERRE & MIQUELON											0.5	0.5
WALLIS & FUTUNA	0.0											0.0
* TOTAL FRENCH OCT	3.5	-0.3	0.1		0.9			1.1			1.7	5.2
ARUBA	-0.2											-0.2
NETHERLANDS ANTILLES											-0.7	-0.7
* TOTAL DUTCH OCT	7.4							-0.7			-0.7	6.7
ANGUILLA	0.0										-0.2	-0.2
CAYMAN ISLANDS		0.0									0.0	0.0
MONTserrat											0.0	0.0
SAINT VINCENT & GRENADINES						-13.5					-13.5	-13.5
FURKS & CAICOS					0.0						0.0	0.0
VANUATU	0.0				1.0	-0.5					0.5	0.5
VIRGIN ISLANDS		-0.2									-0.2	-0.2
* TOTAL BRITISH OCT	0.0	-0.2			0.0						-0.5	-0.5
NET REGIONAL COOPERATION												0.7
* TOTAL REGIONAL COOPERATION C	0.7											0.7
* TOTAL OCT	11.8	-0.5	0.1		0.9						0.6	12.2
* TOTAL ACP + OCT	163.1	1.7	3.5	2.0	8.7	-78.2	0.4	1.1	7.8	4.6	-48.2	116.8

7th EDF BY INSTRUMENT AND BY STATE (MECU)												2.2 Table 6	
ANNUAL YEAR 1998		DECISIONS										TOTAL	
State	NIP	NON NIP										Total NON NIP	State
		Grants	Interest Subsidies	Emergency Aid	Refugee Aid	Risk Capital	STABEX	SYSMIN	Transfers from other Funds	Structural Adjustment Facilities	HIPC debt relief		
ANGOLA	10.1				-0.1							-0.1	10.1
BENIN	5.8					-0.2				0.0		-0.2	5.5
BURKINA FASO	9.5					0.9	0.7	3.8		0.1		4.5	14.0
BOTSWANA	2.9	-1.1				-0.3				0.6		-0.8	2.1
BURUNDI	-0.1									0.0		0.0	-0.1
CENTRAL AFRICAN REPUBLIC	1.9						0.2			0.7	-0.1	0.9	2.9
CHAD	6.0		-0.1							-0.2	0.1	-0.2	5.8
CAMEROON	18.9					0.8				0.9	-0.1	1.7	20.5
CONGO	2.8									0.5		0.5	3.3
COMOROS	5.1					1.0						1.0	6.1
CAPE VERDE	3.1						-0.7			0.1		-0.6	2.5
DJIBOUTI	1.2									0.0	3.0	3.0	4.2
EQUATORIAL GUINEA							-0.8					-0.8	-0.8
ERITREA	1.3		1.0	-0.8								0.3	1.5
ETHIOPIA	0.4			0.6	-1.3					-0.1	0.1	-0.7	-0.4
GABON	0.3							1.7		0.2	0.0	1.9	2.2
GHANA	18.2	-0.4								1.0		0.6	18.8
GAMBIA	2.0									0.0	2.0	2.0	4.0
GUINEA BISSAU	0.5		1.0		-0.5					0.0		0.4	0.9
GUINEA	27.6		1.0	0.2		-0.5		8.8		-0.1	3.0	12.9	40.5
IVORY COAST	14.2					-0.3				1.6	2.8	4.1	18.3
KENYA	14.6		0.0	0.0	0.1					0.0		0.1	14.7
LIBERIA										0.0		0.0	0.0
LESOTHO	0.2	8.8								0.8		9.6	9.8
MADAGASCAR	14.6									2.2		2.2	16.8
MALAWI	21.4						-8.1			0.3	12.0	4.2	25.6
MAURITIUS	4.6	0.5								0.3		0.7	5.3
MAURITANIA	3.5			0.1	1.0			23.1	0.5			24.6	28.2
MALI	10.4		0.0	-0.1	-0.5			0.0	4.7	0.0		4.1	14.6
MOZAMBIQUE	13.0		0.0	1.8								1.8	14.8
NAMIBIA	4.6	-0.2							-0.1			-0.2	4.4
NIGER	10.8							0.3		0.1		0.4	11.2
RWANDA	18.3									2.2		2.2	20.5
SENEGAL	5.7				0.6	-2.9				0.7		-1.7	4.0
SEYCHELLES	0.7												0.7
SIERRA LEONE	4.4		-0.2				4.2	0.0		0.7	0.0	4.8	9.2
SOMALIA										4.4		4.4	4.4
SAO TOME & PRINCIPE	0.6									0.0		0.0	0.6
SUDAN			-0.2							0.1		-0.1	-0.1
SWAZILAND	4.6									0.1		0.1	4.6
TANZANIA	25.2									0.0	5.0	5.0	30.2
TOGO	0.9						-1.2			1.3		0.0	0.9
UGANDA	16.6				0.8	1.2				0.0		4.6	23.2
NIGERIA	-0.1									0.0		0.0	-0.1
ZAMBIA	9.7							0.1		0.1	3.0	0.2	9.9
ZIMBABWE	13.4	-1.1					-12.1			1.4		-11.8	1.6
DEMOCRATIC REPUBLIC OF CONGO	23.6									0.4		0.4	24.0
* TOTAL AFRICA	352.9	6.5	2.5	1.8	2.2	-21.1	37.7	25.5	28.2	4.6		88.0	441.0
ANTIGUA-BARBUDA	1.7												1.7
BARBADOS	0.3	-0.6								0.0		-0.6	-0.3
BELIZE	0.0									0.1		0.1	0.1
DOMINICAN REPUBLIC	12.2	0.0						0.2				0.2	12.4
DOMINICA	0.3						-12.8					-12.8	-12.5
GRENADA	-0.4						-1.7					-1.7	-2.1
GUYANA	6.9							0.0	1.5	0.1		1.5	8.4
HAITI	14.6				4.0							4.0	18.6
JAMAICA	2.1	-1.7						0.7		3.7		2.6	4.7
ST CHRISTOPHER NEVIS	0.0												0.0
SAINT LUCIA	0.6						-17.7					-17.7	-17.1
SURINAM	0.5							0.0	1.3			1.3	1.8
SAINT VINCENT & GRENADINES	0.6						-13.5			0.1		-13.4	-12.7
TRINIDAD & TOBAGO	-0.1	0.8								-1.1		-0.3	-0.3
* TOTAL CARIBBEAN	39.3	-1.5			4.0	-45.7	0.8	5.5	0.1			-36.8	2.5
FUJI	0.1				0.3					0.0		0.2	0.3
KIRIBATI	0.4												0.4
PAPUA NEW GUINEA	4.1	-0.8					5.9			1.5		5.7	9.8
SOLOMON ISLANDS	3.0						1.3					1.3	4.4
TONGA	2.6	-0.4								0.0		-0.4	2.2
VANUATU	0.3									0.0		0.0	0.3
WESTERN SAMOA	0.0												0.0
* TOTAL PACIFIC	10.8	-1.1			0.3	6.4		0.0	1.5			6.9	17.5
ACP REGIONAL COOPERATION	88.0	-1.1				1.7				-0.3		0.3	88.3
* TOTAL REGIONAL COOPERATION A	88.0	-1.1				1.7				-0.3		0.3	88.3
ALL COUNTRIES ACP			0.6							0.7		1.3	1.3
FINANCIAL & ADMINIS. EXPENSES	0.1											0.1	0.5
* TOTAL ACP	490.9	2.7	3.1	1.8	8.2	-60.5	38.6	31.4	30.2	4.6		60.2	551.0
MAYOTTE	0.0											2.0	2.0
NEW CALEDONIA	0.0											0.0	0.0
FRENCH POLYNESIA	0.3	-0.3	0.1		-1.1							-1.3	-1.0
ST PIERRE & MIQUELON												0.5	0.5
WALLIS & FUTUNA	0.0												0.0
RESERVE PTF												-0.1	-0.1
* TOTAL FRENCH OCT	0.3	-0.3	0.1		0.9					0.4		1.1	1.4
ARUBA	1.0											0.1	1.1
NETHERLANDS ANTILLES	3.0											-0.1	2.9
* TOTAL DUTCH OCT	4.0									0.2		0.0	4.0
ANGUILLA	0.0												0.0
CAYMAN ISLANDS		0.0										0.0	0.0
MONTSERAT	0.1		0.4	0.2								0.6	0.7
SAINT HELENA	0.3												0.3
S.AINT VINCENT & GREN. ADINES	0.5											-11.1	-12.7
FURKS & CAICOS	3.1											0.0	3.1
VANUATU	0.3											0.0	0.3
BRITISH ISLANDS	2.3	-0.2										-0.2	2.1
* TOTAL BRITISH OCT	5.9	-0.2	0.4	0.2	0.0							0.4	6.3
ACP REGIONAL COOPERATION B													0.7
* TOTAL REGIONAL COOPERATION C	0.7												0.7
TOTAL OCT	11.0	-0.5	0.5	0.2	0.9					0.4		1.5	12.5
* TOTAL ACP + OCT	521.9	2.2	3.6	2.0	9.1	-60.5	38.6	31.9	30.2	4.6		61.8	583.5

7th EDF BY INSTRUMENT AND BY STATE (MECU)												2.2 Table 8	
ANNUAL YEAR 1998													
DECISIONS		NON NIP										TOTAL	
State	NIP	Interest Subsidies	Emergency Aid	Refugee Aid	Risk Capital	STABEX	SYSMIN	Transfers from other Funds	Structural Adjustment Facilities	HIPC debt relief	Total NON NIP	State	TOTAL
ANGOLA	5.9			0.1							0.1	6.0	
BENIN	13.2				0.1	-0.2		0.1			0.0	13.2	
BURKINA FASO	15.2				4.5	-0.7	4.9	0.8	0.1		9.7	24.8	
BOTSWANA	6.4	4.7					11.1	0.4			16.3	22.7	
BURUNDI	0.0		0.0					0.0			0.0	0.1	
CENTRAL AFRICAN REPUBLIC	33.4					0.2		1.3			1.5	34.9	
CHAD	14.8		0.0					0.0	0.1		0.1	14.9	
CAMEROON	10.3							0.1	0.0		0.1	10.4	
CONGO	1.5											1.5	
COMOROS	3.9											3.9	
CAPE VERDE	3.3					-0.7		0.1			-0.6	2.7	
DJIBOUTI	5.0				0.1				3.0		3.1	8.1	
EQUATORIAL GUINEA						-0.8					-0.8	-0.8	
ERITREA	2.6		0.8	0.1	1.3						2.2	4.8	
ETHIOPIA	11.9		0.4	0.5	7.1			1.1	0.1		9.2	21.1	
GABON	2.3						1.9	0.0	0.0		1.9	4.1	
GHANA	17.9	0.2						1.7			1.9	19.8	
GAMBIA	1.6							0.0	2.0		2.0	3.6	
GUINEA BISSAU	5.1		0.5					0.3			0.8	5.9	
GUINEA	11.4		0.6	0.1	3.3		0.7	0.6	2.2		7.5	18.9	
IVORY COAST	15.1			0.1	1.2			1.9	3.0		6.2	21.4	
KENYA	16.8	1.2		0.2	11.9			0.3			13.6	30.3	
LIBERIA			-0.4					0.3			-0.1	-0.1	
LESOTHO	9.5				2.3			0.2			2.5	12.0	
MADAGASCAR	23.4		0.2		0.7			1.3			2.2	25.6	
MALAWI	20.6				13.3	-8.1		0.4	12.0		17.6	38.1	
MAURITIUS	2.6	2.2			1.3			0.1			3.6	6.3	
MAURITANIA	3.5			0.1	0.6		7.0	0.3	0.0		8.0	11.5	
MALI	15.1		0.1		0.5			0.8			1.4	16.6	
MOZAMBIQUE	25.8			2.9	0.9						3.8	29.6	
NAMIBIA	6.8	2.6			3.0		2.5				8.2	14.9	
NIGER	15.0						1.1	0.3			1.4	16.3	
RWANDA	8.2							0.6			0.6	8.8	
SENEGAL	13.8			0.5	9.1	-2.9		0.9			7.5	21.2	
SEYCHELLES	0.8				1.0			0.0			1.1	1.9	
SIERRA LEONE	3.3		0.5			4.2	0.0	0.3	0.3		5.3	8.6	
SOMALIA								0.9			0.9	0.9	
SAO TOME & PRINCIPE	0.1				0.2				0.0		0.2	0.4	
SUDAN			-0.5					0.1			-0.1	-0.1	
SWAZILAND	3.4				2.5			0.4			2.9	6.4	
TANZANIA	22.1			0.1	7.5			0.1	5.0		12.7	34.8	
TOGO	2.5					-1.2		0.7			-0.5	2.0	
UGANDA	22.2	0.8			6.2	1.2		0.3		4.6	13.1	35.2	
NIGERIA	1.3							0.0			0.0	1.3	
ZAMBIA	11.3				4.1		0.1	1.0	0.0		5.2	16.5	
ZIMBABWE	19.9	0.4			1.1	-12.1		0.1	6.0		-4.5	15.4	
DEMOCRATIC REPUBLIC OF CONGO	4.2				0.7			3.3			3.9	8.1	
* TOTAL AFRICA	432.9	12.2	2.3	5.4	83.8	-21.1	29.3	21.5	33.9	4.6	171.9	604.8	
ANTIGUA-BARBUDA	1.1		0.2								0.2	1.3	
BARBADOS	0.2	2.4						0.0			2.4	2.6	
BELIZE	0.0	0.1			1.8			0.0			1.9	1.9	
BAHAMAS	0.7	3.4									3.4	4.1	
DOMINICAN REPUBLIC	14.3	0.9			7.2		3.6				11.7	26.0	
DOMINICA	0.5					-12.8					-12.8	-12.3	
GRENADA	0.2					-1.7					-1.7	-1.6	
GUYANA	1.9				0.1			1.3	0.0		1.5	3.4	
HAITI	23.8		0.8		2.2				1.9		4.9	28.6	
JAMAICA	3.3	1.7			0.3			4.4			6.4	9.7	
ST CHRISTOPHER NEVIS					0.7						0.7	0.7	
SAINT LUCIA	0.2				0.4	-17.7					-17.3	-17.2	
SURINAM	2.2				0.4			0.4			1.0	3.2	
SAINT VINCENT & GRENADINES	1.1				4.6	-13.5		0.1			-8.8	-7.8	
TRINIDAD & TOBAGO	3.1	1.6			0.9			-0.1	2.1		4.5	7.7	
* TOTAL CARIBBEAN	52.5	10.1	1.0		18.5	-45.7	3.6	6.4	4.0		-2.1	50.4	
FUJI	0.3	0.1			0.0						0.2	0.4	
KIRIBATI	0.5											0.5	
PAPUA NEW GUINEA	5.6	0.4			21.0	5.0		1.0	1.5		28.8	34.5	
SOLOMON ISLANDS	1.5					0.1					0.1	1.6	
TONGA	1.2	0.2									0.2	1.4	
TUVALU	0.0											0.0	
VANUATU	0.9										0.0	0.9	
WESTERN SAMOA	0.6											0.6	
* TOTAL PACIFIC	10.8	0.8			21.0	5.1		1.0	1.5		29.3	39.9	
ACP REGIONAL COOPERATION	96.8	1.0			6.6			2.1			9.7	106.5	
* TOTAL REGIONAL COOPERATION ACP	96.8	1.0	1.0		6.6			2.1			9.7	106.5	
ALL COUNTRIES ACP		2.5	1.0		1.9		0.1	5			6.0	6.0	
FINANCIAL & ADMINIS. EXPENSES	0.1										0.7	0.8	
* TOTAL ACP	592.9	26.5	4.4	5.4	131.9	-61.7	33.0	31.4	40.1	4.8	215.5	808.3	
MAYOTTE	0.2											0.2	
NEW CALEDONIA	0.7	0.1			1.0			2			1.3	2.0	
FRENCH POLYNESIA	0.2	0.2			0.1						0.6	0.8	
ST PIERRE & MIQUELON											0.1	0.1	
WALLIS & FUTUNA	0.7											0.7	
* TOTAL FRENCH OCT	1.8	0.3			1.4			0.0			2.0	3.8	
ARUBA	0.5										0.0	0.5	
NETHERLANDS ANTILLES	2.1				0.3						0.6	2.7	
* TOTAL DUTCH OCT	2.9				0.3			0.0			0.6	3.2	
ANGUILLA	0.2											0.2	
CAYMAN ISLANDS		0.3									0.3	0.3	
MONTSERRAT	0.0		0.1	0.2							0.6	0.6	
SANT HELENA	0.1											0.1	
SAINT VINCENT & GRENADINES	1.1				1.5	-11.5					-8.8	-7.8	
TRINIDAD & TOBAGO												1.0	
TUVALU											0.0	0.0	
VANUATU											0.0	0.0	
BRITISH ISLANDS		0.1									0.1	0.1	
* TOTAL BRITISH OCT	1.3	0.3	0.4	0.2							0.9	2.2	
ACP REGIONAL COOPERATION											0.0	0.0	
* TOTAL REGIONAL COOPERATION C	0.7										0.0	0.8	
ALL COUNTRIES OCT			0.9								0.9	0.9	
* TOTAL OCT	6.4	0.8	1.3	0.2	1.7						4.4	10.8	
* TOTAL ACP + OCT	599.3	27.1	5.7	5.6	133.6	-61.7	33.0	32.4	40.1	4.8	219.8	819.1	

8th EDF BY INSTRUMENT AND BY STATE (MECU)

CUMULATIVE YEAR 1998											2.3 Table 2	
DECISIONS	NIP					NON NIP					TOTAL	
State	Grants	Interest Subsidies	Emergency Aid	Refugee Aid	Risk Capital	STABEX	SYSMIN	Transfers from other Funds	Structural Adjustment Facilities	Utilisation of interest income	Total NON NIP	State
ANGOLA	2.3											2.3
BENIN	1.9					0.2			20.1		20.3	22.2
BURKINA FASO	46.1					0.8			27.0		27.8	73.8
BOTSWANA	0.4											0.4
BURUNDI						3.9					3.9	3.9
CENTRAL AFRICAN REPUBLIC	18.7					4.4			7.2		11.6	30.3
CHAD	33.1								16.8		16.8	49.9
CAMEROON	32.3								25.0		25.0	57.3
COMOROS	1.9						4.9				4.9	6.7
CAPE VERDE	6.9						0.7		9.4		10.1	17.0
DJIBOUTI	3.3								2.6		2.6	5.9
EQUATORIAL GUINEA						0.8					0.8	0.8
ETHIOPIA	145.0				41.0				74.4		115.4	260.4
GABON	23.4								2.7		2.7	26.1
GHANA	14.8				3.0				21.4		24.4	39.2
GHAMBIA						3.4					3.4	3.4
GUINEA BISSAU	2.0					0.1					0.1	2.0
GUINEA	27.5								21.4		21.4	48.9
IVORY COAST	4.6	0.4							32.4		32.8	37.4
KENYA		2.1			10.0						12.1	12.1
LESOTHO		1.8									1.8	1.8
MADAGASCAR	25.8		1.1		29.0	16.3					46.4	72.3
MALAWI	84.6				10.0	10.4			8.5		28.9	113.6
MALDIVES	22.0	0.9			5.0						5.9	27.9
MALITANIA	16.5	1.2		0.2	5.0				11.2		17.6	34.1
MALI	86.9		5.0						29.4		34.4	121.3
Mozambique	17.4				19.0				52.8		71.8	89.2
NAMIBIA	28.9	11.2			2.0						13.2	42.0
NIGER	0.5								15.8		15.8	16.3
RWANDA						17.4					17.4	17.4
SENEGAL	3.1				8.0	22.3			27.9		38.2	61.2
SEYCHELLES	4.1											4.1
SIERRA LEONE						2.1			8.5		10.6	10.6
SUDAN			20.0			34.3					54.3	54.3
SWAZILAND	5.4				12.5						12.5	17.9
TANZANIA	2.2				14.8	3.1			7.2		89.1	91.2
TOGO						5.0					5.0	5.0
UGANDA	8.0				16.8	0.4			41.1		58.3	66.3
ZAMBIA	71.3				37.6				46.7		84.3	155.6
ZIMBABWE	19.9				3.2	12.1	0.1				15.5	35.4
DEMOCRATIC REPUBLIC OF CONGO			0.9								0.9	0.9
* TOTAL AFRICA	760.7	17.5	27.0	0.2	216.9	142.4	0.1	573.4			977.8	1738.4
BARBADOS	1.4	2.6									2.6	4.0
BELIZE	6.6											6.6
DOMINICAN REPUBLIC	12.2				7.0						7.0	19.2
DOMINICA					3.0	22.2					25.2	25.2
GRENADA						2.5					2.5	2.5
GUYANA	0.1								5.3		5.3	5.4
HAITI	0.5											0.5
JAMAICA	16.0											16.0
SAINT LUCIA	0.3					30.3					30.3	30.6
CURINAM		0.3									0.3	0.3
SAINT VINCENT & GRENADINES	0.7	0.4				28.3					28.7	29.4
TRINIDAD & TOBAGO	0.4				2.0						2.0	2.4
* TOTAL CARIBBEAN	38.3	3.3			12.0	83.2		5.3			103.8	142.1
FJI					2.0						2.0	2.0
KIRIBATI						0.2					0.2	0.2
PAPUA NEW GUINEA	24.1		0.2								0.2	24.3
SOLOMON ISLANDS						0.2					0.2	0.2
TONGA						0.4					0.4	0.4
TUVALU						0.0					0.0	0.0
VANUATU	7.8				3.0	0.7					3.7	11.4
WESTERN SAMOA	10.0				6.2						6.2	16.2
* TOTAL PACIFIC	41.9		0.2		11.2	1.5					12.8	54.8
WEST AFRICA REGION	0.7	2.0			30.0						32.0	32.7
CENTRAL AFRICA REGION	57.0											57.0
SOUTHERN AFRICA REGION	18.7											18.7
INDIAN OCEAN REGION	1.3											1.3
CARIBBEAN REGION	4.1											4.1
MULTI-REGIONAL (PALOP)	1.0											1.0
CENTRAL ACP BUDGET	141.2											141.2
* TOTAL REGIONAL COOPERATION ACP	224.1	2.0			30.0						32.0	256.1
ALL COUNTRIES ACP			6.0		20.0						26.0	26.0
FINANCIAL & ADMINIS. EXPENSES										5.5	5.5	5.5
* TOTAL ACP	1064.9	22.8	33.2	0.2	290.1	227.1	0.1	578.7	5.5		1157.9	2222.8
ARABYITE						0.8					0.8	0.8
* TOTAL FRENCH OCT						0.8					0.8	0.8
CUBA					0.5						0.5	0.5
* TOTAL DUTCH OCT					0.5						0.5	0.5
SAINT VINCENT & GRENADINES		0.1				28.1					28.2	29.4
GUATMALA					3.0	0.7					3.7	11.4
* TOTAL OCT					0.5	0.8					4.3	1.3
* TOTAL ACP + OCT	1064.9	22.8	33.2	0.2	290.6	227.9	0.1	578.7	5.5		1159.2	2224.1

8th EDF BY INSTRUMENT AND BY STATE (MECU)											2.3 Table 3	
CUMULATIVE YEAR 1998												
DELEGATED APPROPRIATIONS	NIP	NON NIP									TOTAL	TOTAL
State	Grants	Interest Subsidies	Emergency Aid	Refugee Aid	Risk Capital	STABEX	SYSMIN	Transfers from other Funds	Structural Adjustment Facilities	Utilisation of interest income	Total NON NIP	State
BENIN						0,2			12,6		12,8	12,8
BURKINA FASO	1,2					0,7			27,0		27,6	28,8
CENTRAL AFRICAN REPUBLIC	0,4					4,4					4,4	4,8
CHAD	0,1								10,4		10,4	10,5
CAMEROON	0,6								25,0		25,0	25,6
COMOROS	1,1					4,9					4,9	5,9
CAPE VERDE	0,3					0,7			8,4		9,1	9,3
EQUATORIAL GUINEA						0,8					0,8	0,8
ETHIOPIA					41,0				74,4		115,4	115,4
GHANA	0,0				3,0						3,0	3,0
GAMBIA						3,4					3,4	3,4
GUINEA									21,2		21,2	21,2
IVORY COAST									31,4		31,4	31,4
KENYA					10,0						10,0	10,0
MADAGASCAR	0,9		1,1			16,3					17,4	18,3
MALAWI	14,0				10,0	10,4			8,5		28,9	42,9
MAURITIUS		0,9									0,9	0,9
MAURITANIA	0,0				5,0						5,0	5,0
MALI			3,7						28,9		32,6	32,6
MOZAMBIQUE	0,1				19,0				22,9		41,9	42,0
NAMIBIA	0,5	11,2			2,0						13,2	13,6
NIGER	0,3								15,5		15,5	15,8
SENEGAL						22,3			24,4		46,7	46,7
SEYCHELLES	2,5										2,5	2,5
SIERRA LEONE						2,1					2,1	2,1
SUDAN			19,4								19,4	19,4
SWAZILAND	0,9										0,9	0,9
TANZANIA					14,8	3,1			69,7		87,6	87,6
TOGO						1,2					1,2	1,2
UGANDA	0,0				1,8	0,4					2,2	2,3
ZAMBIA	3,2				32,0						32,0	35,2
ZIMBABWE	0,8				3,2	12,1					15,4	16,0
DEMOCRATIC REPUBLIC OF CONGO			0,9								0,9	0,9
* TOTAL AFRICA	26,6	12,1	25,1		141,8	82,9			380,3		642,2	668,9
BELIZE	4,4										4,4	4,4
DOMINICAN REPUBLIC					6,0						6,0	6,0
DOMINICA					3,0	22,2					25,2	25,2
GRENADA						2,5					2,5	2,5
GYANA	0,1								5,3		5,3	5,4
HAITI	0,3										0,3	0,3
JAMAICA	0,3										0,3	0,3
SANT LUCIA	0,1					30,3					30,3	30,3
SURINAM		0,3									0,3	0,3
SANT VINCENT & GRENADINES	0,4	0,4				28,3					28,7	29,1
TRINIDAD & TOBAGO					2,0						2,0	2,0
* TOTAL CARIBBEAN	5,3	0,7			11,0	83,2			5,3		100,2	105,6
FILIPINES					2,0						2,0	2,0
KIRIBATI						0,2					0,2	0,2
PAPUA NEW GUINEA	0,1		0,2								0,2	0,3
SOLOMON ISLANDS						0,2					0,2	0,2
VANUATU						0,7					0,7	0,7
WESTERN SAMOA					2,0						2,0	2,0
* TOTAL PACIFIC	0,1		0,2		4,0	1,1					5,3	5,4
WEST AFRICA REGION	0,4				30,0						30,0	30,4
INDIAN OCEAN REGION	0,3										0,3	0,3
CARIBBEAN REGION	0,1										0,1	0,1
INTRA ACP BUDGET	55										55	55,0
* TOTAL REGIONAL COOPERATION ACP	55,5				30,0						30,0	85,5
ALL COUNTRIES ACP			5,9		20,0						25,9	25,9
FINANCIAL & ADMINIS. EXPENSES										2,8	2,8	2,8
* TOTAL ACP	87,6	12,7	31,2		206,8	167,2			385,6	2,8	806,4	894,0
SANT VINCENT & GRENADINES	0,4	0,4				28,3					28,7	29,1
VANUATU						0,7					0,7	0,7
* TOTAL ACP + OCT	87,6	12,7	31,2		206,8	167,2			385,6	2,8	806,4	894,0

8th EDF BY INSTRUMENT AND BY STATE (MECU)

CUMULATIVE YEAR 1998											2.3 Table 4	
State	NIP					NON NIP					Total NON NIP	TOTAL State
	Grants	Interest Subsidies	Emergency Aid	Refugee Aid	Risk Capital	STABEX	SYSMIN	Transfers from other Funds	Structural Adjustment Facilities	Utilisation of interest income		
BENIN						0,2			12,6		12,8	12,8
BURKINA FASO	0,0					0,7			21,0		21,6	21,6
CENTRAL AFRICAN REPUBLIC						4,4					4,4	4,4
CHAD	0,0								10,4		10,4	10,4
CAMEROON	0,1								15,0		15,0	15,1
COMOROS						4,9					4,9	4,9
CAPE VERDE	0,0					0,7			8,4		9,1	9,1
EQUATORIAL GUINEA						0,8					0,8	0,8
ETHIOPIA									50,0		50,0	50,0
GAMBIA						3,4					3,4	3,4
GUINEA									12,8		12,8	12,8
IVORY COAST									16,4		16,4	16,4
MADAGASCAR	0,0					16,3					16,3	16,3
MALAWI	4,5					10,4			4,5		14,9	19,4
MAURITANIA						5,0					5,0	5,0
MALI			0,7						20,4		21,1	21,1
MOZAMBIQUE						6,0			22,9		28,9	28,9
NAMIBIA						1,4					1,4	1,4
NIGER									15,5		15,5	15,5
SENEGAL						22,3			24,3		46,6	46,6
SEYCHELLES	0,3										0,3	0,3
SIERRA LEONE						2,1					2,1	2,1
SI			3,3								3,3	3,3
TANZANIA						0,3	3,1				3,4	3,4
TOGO							1,2				1,2	1,2
UGANDA						1,8	0,4				2,2	2,2
ZAMBIA	0,6										0,6	0,6
ZIMBABWE						1,6	12,1				13,7	13,7
DEMOCRATIC REPUBLIC OF CONGO			0,5								0,5	0,5
* TOTAL AFRICA	5,5		4,5			16,2	82,9		234,2		337,7	343,2
DOMINICAN REPUBLIC						3,1					3,1	3,1
DOMINICA							22,2				22,2	22,2
GRENADA							2,5				2,5	2,5
GUYANA									5,3		5,3	5,3
HAITI	0,0										0,0	0,0
JAMAICA	0,0										0,0	0,0
SAINT LUCIA							20,9				20,9	20,9
SAINT VINCENT & GRENADINES							21,9				21,9	21,9
* TOTAL CARIBBEAN	0,0					3,1	67,5		5,3		75,9	75,9
PAPUA NEW GUINEA			0,1								0,1	0,1
VANUATU							0,7				0,7	0,7
WESTERN SAMOA						0,3					0,3	0,3
* TOTAL PACIFIC			0,1			0,3	0,7				1,1	1,1
WEST AFRICA REGION	0,1					3,5					3,5	3,6
INDIAN OCEAN REGION	0,0										0,0	0,0
CARIBBEAN REGION	0,0										0,0	0,0
INTRA ACP BUDGET	39,5										39,5	39,6
* TOTAL REGIONAL COOPERATION AND DEVELOPMENT	39,8					3,5					3,5	43,2
ADMINISTRATIVE EXPENSES			2,4								2,4	2,4
FINANCIAL & ADMINIS. EXPENSES									0,8		0,8	0,8
* TOTAL ACP	45,3		7,0			23,0	151,1		239,5	0,8	421,3	466,6
SAINT VINCENT & GRENADINES							21,9				21,9	21,9
VANUATU							0,7				0,7	0,7
* TOTAL ACP + OCT	45,3		7,0			23,0	151,1		239,5	0,8	421,3	466,6

3. OTHER MANAGEMENT INFORMATION

3.1 SITUATION OF "SLEEPING" COMMITMENTS

I. Slow-moving projects

The table below shows the "slow-moving" commitments by appropriation for the 6th and the 7th EDF. A commitment is considered slow-moving, if during a period of 18 months before December 31, 1998 no new contracts have been concluded or no payments made on contracts open at December 31. Also included below are commitments not identified by this method, but which appear to be blocked or suspended.

"Slow-moving" commitments are grouped into three categories: projects that should remain open, projects to be closed, and projects where the status is unknown. The figures below show the outstanding balance, ie the difference between the commitment and the payments made.

The Commission will attempt to close as soon as possible the balance of projects classified as to be closed amounting to 18.1 million (5,2 million for 6th EDF and 12,9 million for 7th EDF) in order for these funds to be made available for new projects.

(ECU million)

Appropriation	6th EDF				7th EDF			
	Total commitments unpaid	Balance to remain open	Balance to be closed	Status unknown	Total commitments unpaid	Balance to remain open	Balance to be closed	Status unknown
Programmable aid (1)	37,80	30,00 (a)	5,10 (b)	2,70	149,80	123,00 (e)	12,60 (d)	14,20 (f)
S.					8,70	8,40	0,10	0,20
Emergency aid					3,30	0,50	0,10	2,70
Aid for refugees	0,10		0,10		1,20	1,20		
Stabex					134,50	134,50 (g)		
Sysmin	20,60	20,40 (c)		0,20	2,70	0,10	0,10	2,50
Interest-rate subsidies					15,30	15,30 (h)		
Risk capital					83,00	83,00 (j)		
Total	58,50	50,40	5,20	2,90	398,50	366,00	12,90	19,60
As % of aggregate decisions	0,84%	0,73%	0,08%	0,04%	3,82%	3,51%	0,12%	0,19%

(1) Grants, special loans, unexpended balance of previous EDFs.

NOTES

6th EDF balances consist of:

(a) Programmable aid projects to remain open:

* One commitment in the road sector in Angola suspended because the civil war-invitations to tender were launched in 1998	8,20
* One commitment in the road sector in Rwanda suspended because of litigation	5,60
* One commitment for rehabilitation of sanitary facilities in Angola suspended because of the civil war invitations to tender were launched in 1998	4,30
* One commitment in the road sector in Angola suspended because of the civil war	2,10
* One commitment in the road sector in Kenya suspended because of claims pending	1,50
* One commitment in the urban development sector in Guinea	1,30
* One commitment in the urban development sector in Djibouti	1,10
* Sundry smaller projects	5,90
	<u>30,00</u>

(b) Programmable aid projects to be closed:

* One commitment in Chad concerning a project for rehabilitation of facilities	1,00
* One commitment in Surinam concerning a project for transport facilities	0,70
* Sundry smaller projects	3,40
	<u>5,10</u>

SITUATION OF "SLOW-MOVING" COMMITMENTS - Notes (cont'd.)

c) Sysmin projects to remain open:

One commitment of originally ECU 18 million to Papua New Guinea (the implementation of which is slow) with a remaining uncommitted balance of ECU 4,7 million; and one commitment of ECU 15.7 million to Togo that has been blocked because of the political situation there, but which is due to begin in 1998.

7th EDF balances consist of:

d) Programmable aid projects to be closed:

* One commitment concerning a project for the social reintegration of young people in Mozambique	1,90
* One commitment in Djibouti for a regional programme for communication facilities networks services	1,90
* One commitment in Guinea in the social economy sector.	0,95
* Sundry smaller projects	7,75
	<u>12,60</u>

e) Programmable aid projects to remain open:

* One commitment in Zaire to support the national election, blocked because of the political situation.	30,00
* One regional programme to support rural development (farming control areas)	15,10
* One commitment in Nigeria suspended because of the political situation of the region	13,19
* One commitment in Sierra Leone to support an agricultural programme blocked because of claims	10,41
* One project supporting a training programme in Nigeria suspended because of the political situation of the region	8,66
* One commitment in Ethiopia in the work sector delayed because of claims.	6,37
* One commitment in Sierra Leone concerning a programme for water purification and food support. Claims pending	6,19
* One commitment in Zambia supporting the road sector	2,58
* One project to support the settlement of young agricultural workers in New Caledonia (discussion ongoing to revitalise the program)	2,32
* One regional project to support the development of the common market for eastern and southern Africa. Following cancellation of tenders the negotiations will start on a direct agreement basis.	1,99
* One commitment in Djibouti for a programme of grain marketing	1,99
* One commitment in Ethiopia to support rural development	1,80
* One commitment in Djibouti in the energy sector	1,75
* One commitment in Burundi concerning a project of training in the context of rural development	1,73
* One commitment in Kenya to support rural development. On-going.	1,50
* One commitment in Somalia for the construction of a bridge	1,45
* Sundry smaller projects	15,97
	<u>123,00</u>

f) Programmable aid projects with unknown status:

Six commitments totalling ECU 8,6 million in Rwanda, Burundi and Uganda blocked because of the political situation in those countries

g) Stabex projects to remain open :

All Stabex transfers blocked since the end of 1996, incl. ECU 103.8 million for Sudan and ECU 31.0 million for Burundi because of political situation in those countries

h) Interest rate subsidy projects to remain open:

One regional project (ECU 5.3 million), one commitment for Madagascar (ECU 4.6 million), Gabon (ECU 2.4 million) and Cameroon (ECU 1.7 million).

j) Risk capital projects to remain open:

Including commitments for Ethiopia (ECU 15.7 million and 9 million) Cameroon (ECU 12.5 million) Mozambique (ECU 3 million) Papua New Guinea (ECU 1.7 million), Antigua and Barbuda (ECU 5.2 million), Guyana (ECU 7.8 million) and 3 regional projects (totalling ECU 5.2 million) Swaziland (ECU 3 million).

II. Funds expected not to be used under existing projects

Presently net outstanding commitments, ie financing decisions less payments made to date, amount to 5,356 million. Based on statistical calculations of the average decommitment made at past project closures, it is expected that 1,057 million will not be used up before closure of the projects in question. The amount is mainly made up of contingency reserves for individual projects

3.2 LOCAL REVENUE AND EXPENDITURE TO BE REGULARIZED

Revenue and expenditure on paying agent accounts still to be entered in the authorizing officer's accounts at the end of the 1998 financial year (by beneficiary country)

At the date of publication of the financial statements, the vast majority of the revenue and expenditure in question has been recorded in the accounts of the projects concerned.

(ECU '000)

Country	Revenue/expenditure		Total
	pre 1998	during 1998	
in the ACP States	1.229,6	6.131,1	7.360,7
ANTIGUA AND BARBUDA	31,6	19,7	51,3
BARBADOS	55,7	10,8	66,5
BENIN		-6,4	-6,4
BOTSWANA		17,6	17,6
BURKINA FASO		332,9	332,9
CAMEROON	1,7	1.655,2	1.656,9
CENTRAL AFRICAN REPUBLIC		147,9	147,9
CHAD	80,0	494,8	574,8
COMOROS	20,8		20,8
CONGO	206,0	198,6	404,6
DOMINICA		-41,9	-41,9
DOMINICAN REPUBLIC		31,8	31,8
ETHIOPIA		-35,4	-35,4
GABON		124,9	124,9
GHANA		218,4	218,4
GUINEA		-413,7	-413,7
GUYANA		14,6	14,6
HAITI		87,5	87,5
IVORY COAST	67,5	151,6	219,1
KIRIBATI	-0,2		-0,2
MADAGASCAR	129,1	127,7	256,8
MALAWI		97,2	97,2
MALI		100,1	100,1
MAURITANIA		14,8	14,8
MAURITIUS		-53,4	-53,4
NAMIBIA		79,4	79,4
RWANDA		611,4	611,4
SAINT LUCIA	37,0		37,0
SAINT VINCENT AND THE GRENADINES	112,6	9,1	121,7
SENEGAL		566,2	566,2
SEYCHELLES		5,3	5,3
SIERRA LEONE		229,4	229,4
SURINAM		-1,3	-1,3
TANZANIA	98,9	147,1	246,0
TRINIDAD AND TOBAGO		129,9	129,9
VANUATU	7,4		7,4
ZAMBIA		132,5	132,5
ZIMBABWE			0,0
Other ACP (regional, etc.)	381,5	926,8	1.308,3
in the OCT		31,5	31,5
Other (1)		5.314,2	5.314,2
TOTAL	1.229,6	11.476,8	12.706,4

Situation at 31.12.1997	14.730,6
--------------------------------	-----------------

Annual change	-13,74%
----------------------	----------------

(1) Mainly items booked by local paying agents, concerning which the Commission had not received information at the date of the annual closing of the accounts.

3.3 ADVANCES FOR STUDY AWARDS AND TECHNICAL ASSISTANCE CONTRACTS AT 31.12.1998

Advances are paid to Commission delegations and agencies in Member States administering study awards and technical assistance contracts on behalf of the Commission. These advances are cleared regularly, when expense reports are received, and replenished based on the volume of study awards and technical assistance contracts handled.

The amount of outstanding advances at the end of 1998 and 1997 respectively is shown below.

(Amounts in ECU '000)	December 31 1998	December 31 1997
STUDY AWARDS	5.007,6	8.052,1
Commission Delegations	2.759,3	5.165,0
BURKINA FASO	66,3	75,7
CHAD	58,4	55,3
CÔTE D'IVOIRE	1.131,4	2.132,1
KENIA	54,5	36,8
MALI	135,5	135,5
PAPOUASIE NOUVELLE GUINEE	48,5	17,2
RWANDA	61,6	64,2
SENEGAL	88,0	334,8
TANZANIA	343,0	720,8
UGANDA	136,2	136,2
NIGERIA	78,7	248,1
ZIMBABWE	58,2	340,3
OTHER COMMISSION DELEGATIONS	499,0	868,0
Member State agencies	2.248,3	2.887,1
BELGIUM / AEC	113,2	46,8
DENMARK / UNDERVISNINGS MINISTERIET	-15,2	39,1
FRANCE / CIES	174,4	775,7
GERMANY / CDG	210,5	355,8
IRELAND / IRISH COUNCIL	6,4	6,5
ITALY / CONICS	0,0	22,7
NETHERLANDS / NUFFIC	221,9	437,6
PORTUGAL / INSTITUTO DA COOPERAÇÃO PORTUGUESA	650,6	520,4
UK / BRITISH COUNCIL	886,5	682,5
TECHNICAL ASSISTANCE*	21.647,3	9.855,0
AEC	4.647,3	9.855,0
GTZ	15.000,0	-
AGRER	2.000,0	-
TOTAL	26.654,9	17.907,1

* During 1998 AGRER and GTZ replaced AEC as administrators of technical assistance contracts.

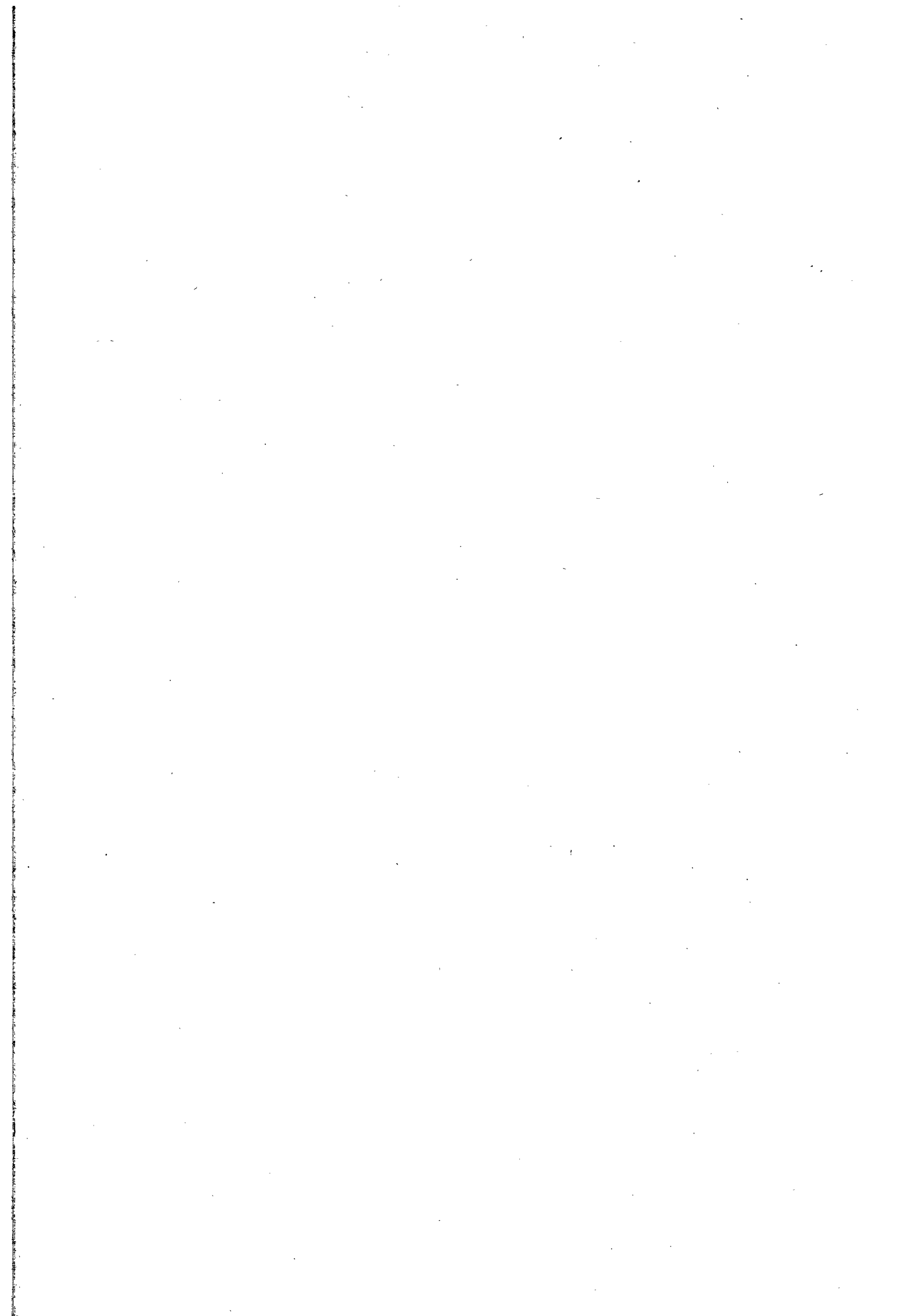
3.4. ADVANCES ON CONTRACTS AS AT 31.12.1998

Many contracts provide for payments of advances before the commencement of works, deliveries of supplies or the provision of services. Sometimes the payment schedules of contracts foresee payments on account on the basis of progress reports. In accordance with the Financial Regulation both payments on account and advances are treated as expenditure on projects in the annual accounts of the EDF.

Advances, which normally are paid in the currency of the country or territory, where the project is executed, are however kept separate in the accounts to allow them to be cleared. The table below summarizes outstanding advances at the end of the year. Conversion into ECU is made using the official exchange rate at December 31, 1998.

(ECU million)	6th EDF	7th EDF	8th EDF	TOTAL
Grants	85,27	282,91	1,06	369,24
ACP	83,11	277,31	1,06	361,48
OCT	2,16	5,60		7,76
Special loans	9,58			9,58
ACP	9,40			9,40
OCT	0,18			0,18
PROGRAMMABLE AID	94,85	282,91	1,06	378,82
ACP	92,51	277,31	1,06	370,88
OCT	2,34	5,60		7,94
SYSMIN	7,00	22,28		29,28
ACP	7,00	22,28		29,28
OCT				0,00
Aid for refugees	0,16	7,49	6,77	14,42
ACP	0,16	7,40	6,77	14,33
OCT		0,09		0,09
Emergency aid	0,65	3,57		4,22
ACP	0,65	3,57		4,22
OCT				0,00
NON-PROGRAMMABLE AID	7,81	33,34	6,77	47,92
ACP	7,81	33,25	6,77	47,83
OCT	0,00	0,09		0,09
Unexp. balance 1st-5th EDFs	1,67	29,00		30,67
ACP	1,44	28,44		29,88
OCT	0,23	0,56		0,79
TOTAL	104,33	345,25	7,83	457,41
ACP	101,76	339,00	7,83	448,59
OCT	2,57	6,25		8,82

Note: Under structural adjustment programmes some payments are considered advances until confirmation of the proper use of the funds by the recipient state is received. Those payments are not included above, since they do not represent advances in the same sense as the above summarized advances on contracts.



ISSN 0254-1475

COM(1999) 227 final

DOCUMENTS

EN

11 09 01 17

Catalogue number : CB-CO-99-224-EN-C

Office for Official Publications of the European Communities
L-2985 Luxembourg